

MÛRISSE

ARCHITECTURE PARENT + RACHDI

DOSSIER N° : 2023-16

CONSTRUCTION DU CENTRE DE PÉRINATALITÉ AU CENTRE HOSPITALIER HENRI LABORIT
POITIERS (86)

DCE : CARNET DE DÉTAIL

NANTES, JANVIER 2026

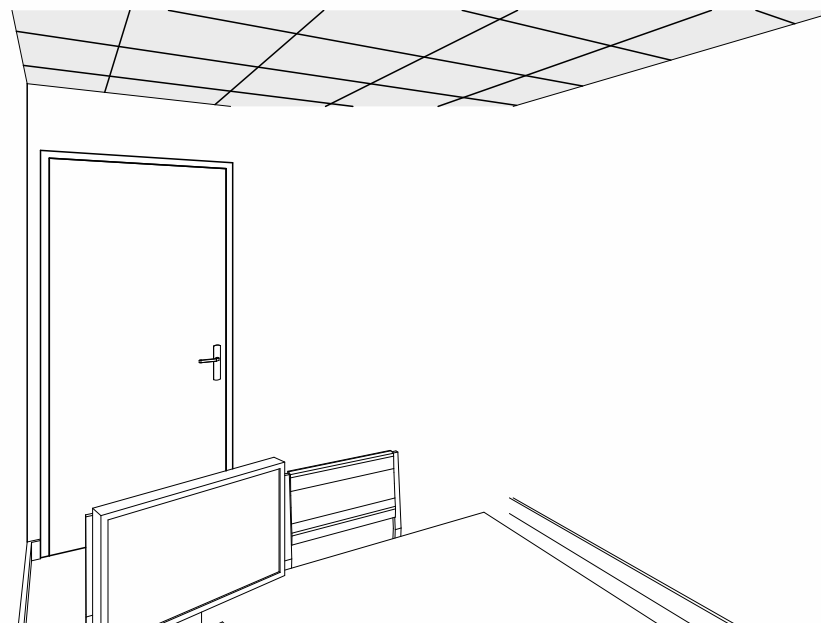
MAÎTRE D'OUVRAGE
CENTRE HOSPITALIER HENRI LABORIT
770 Avenue Jacques Cassin - CS 10685
86029 POITIERS Cedex
Tél : 05 49 44 32 33



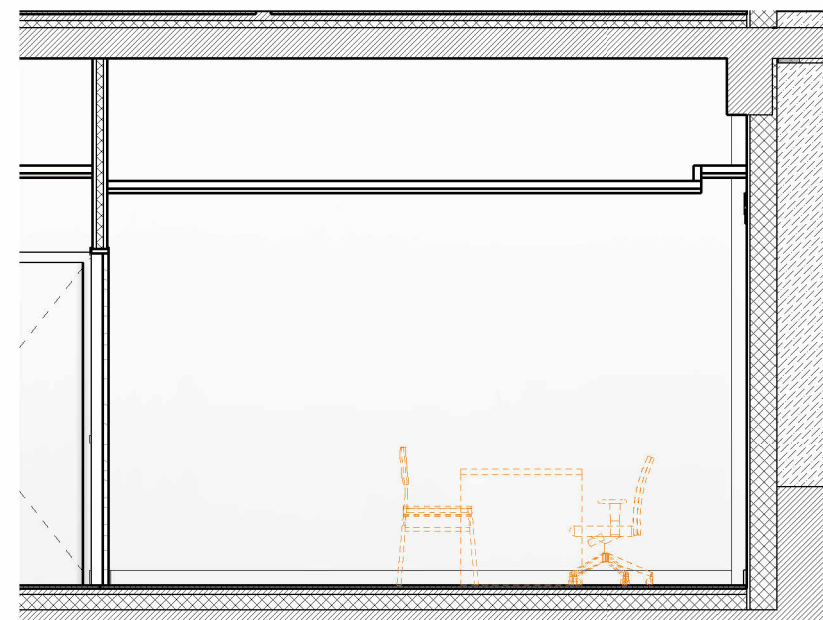
CONTRÔLEUR TECHNIQUE :
COORDONNATEUR RPS :

MAÎTRE D'OUVRAGE
ARCHITECTE MAÎTRISANT : MÛRISSE
BUREAU D'ÉTUDES
Géomètre - OPC : CABINET MARET
RE FUSION, électricité, thermique, HVAC, menuiserie : ISOOKATO
RE STRUCTURE : ARS
VED : ETNA CONSEIL
BC, Acoustique : IFAC

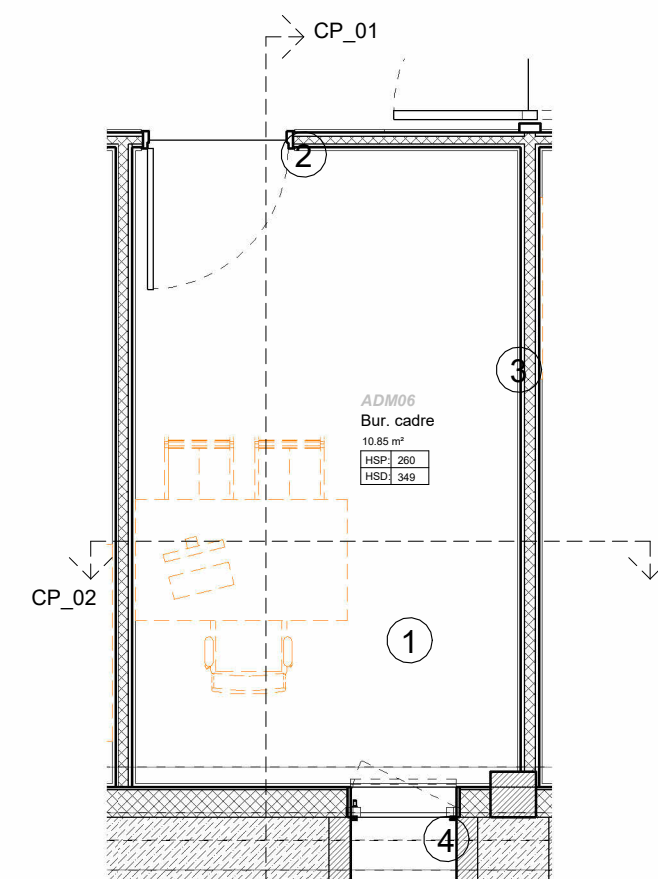




DET01-PERSPECTIVE_01



DET01-CP_01_50
1 : 50

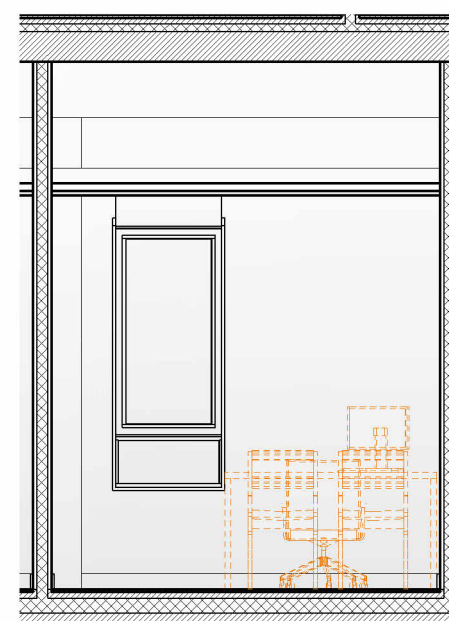
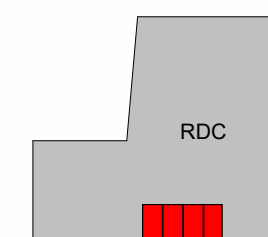


DET01-PLAN_20
1 : 50

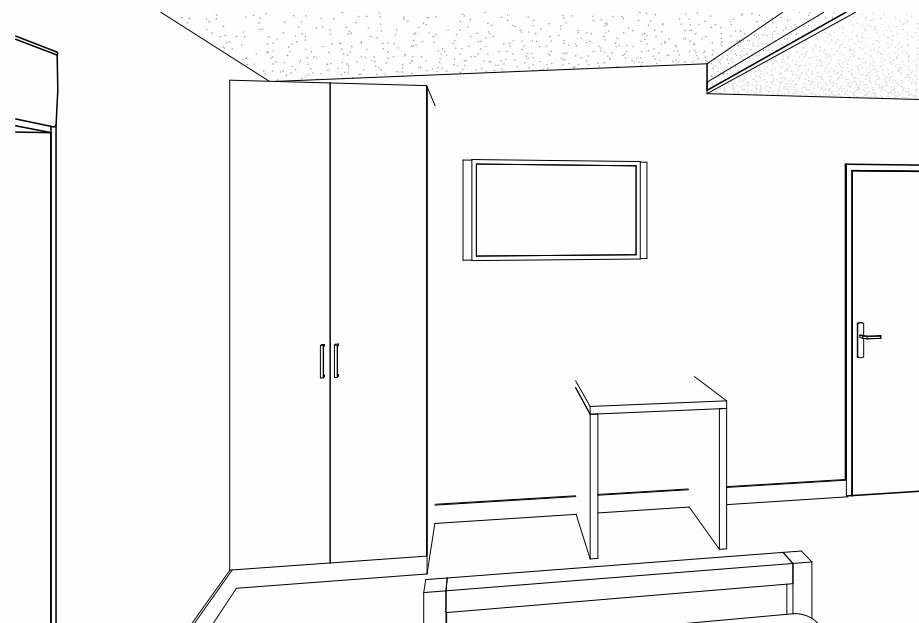
Mobilier :

- ① Bureau 80 x 140 cm + chaises
- ② Placard intégré 120 x 60 cm
- ③ Fauteuil
- ④ Châssis 70 x 185 cm sur allège vitrée h = 35 cm

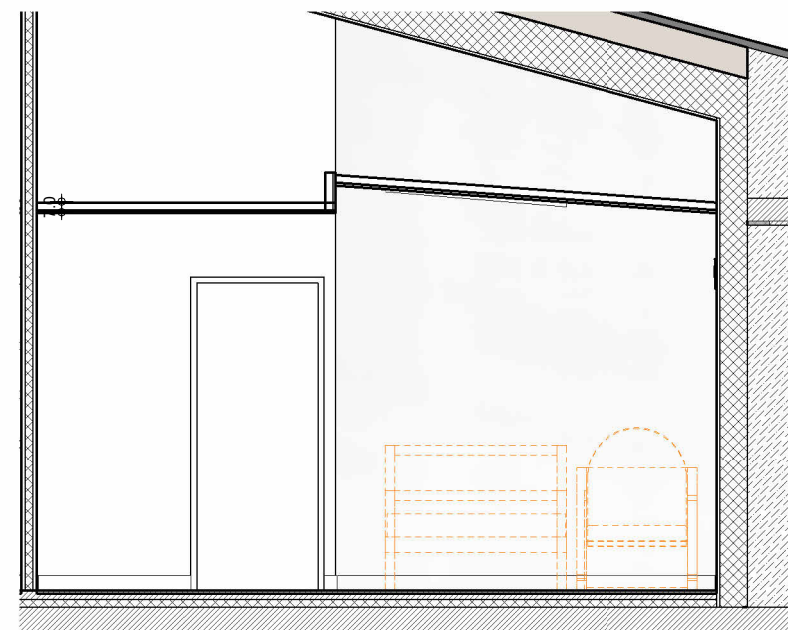
Surface bureaux = 12 m² env.



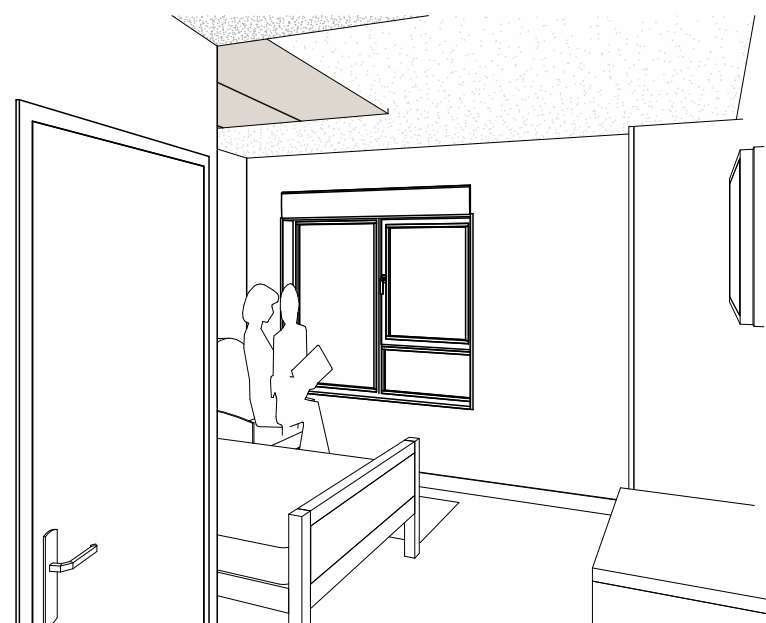
COUPE 02
1 : 50



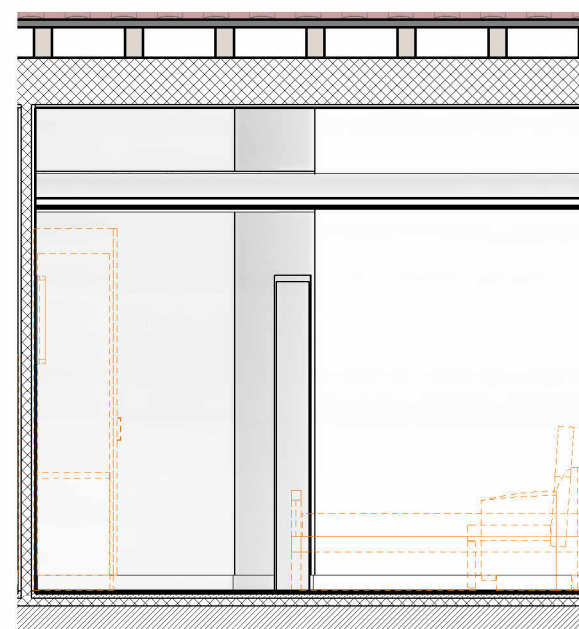
Vue-1-Chambre-type



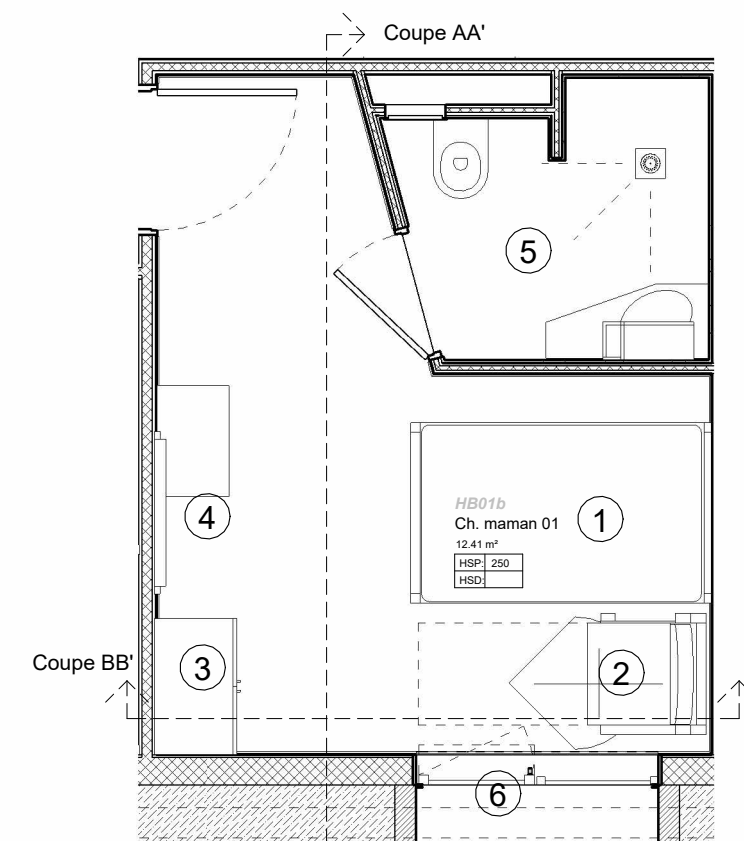
Coupe chambre AA'
1 : 50



Vue-2-Chambre-type



Coupe chambre BB'
1 : 50

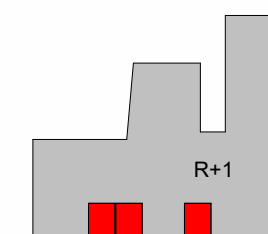


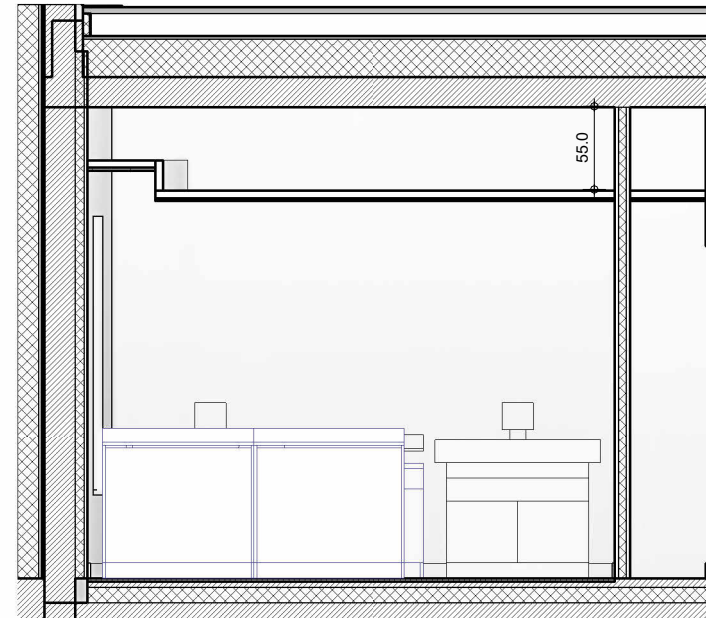
Plan chambre typé
1 : 50

Mobilier :

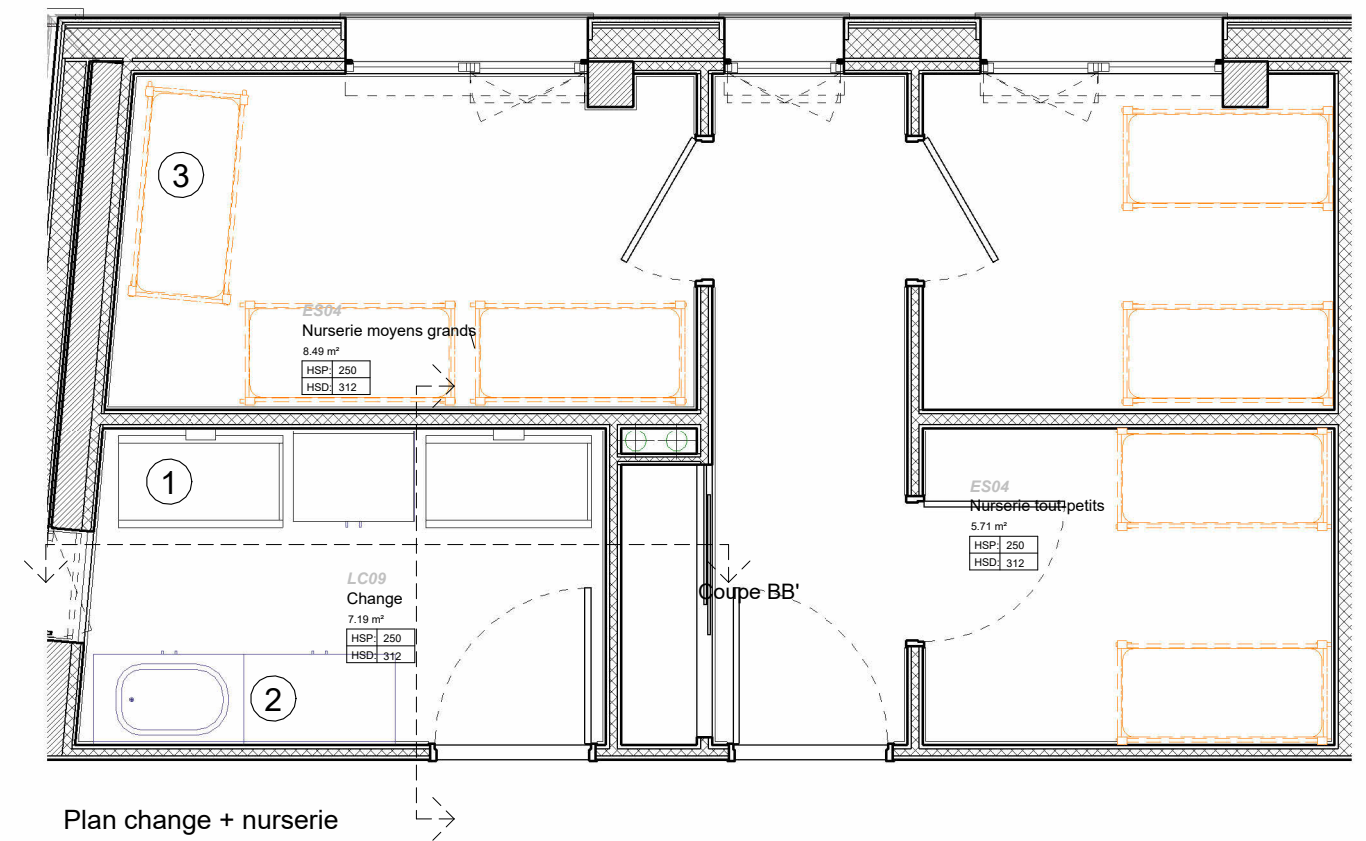
- ① Lit 120 x 210 cm
- ② Lit accompagnant
- ③ Placard intégré 90 x 50 cm
- ④ Bureau + meuble change
- ⑤ **SDE 3,6 m² env.** : wc, vasque, receveur 80 x 100 cm
- ⑥ Châssis 140 x 80 cm sur allège pleine

Surface chambres = 15.5 m² env.

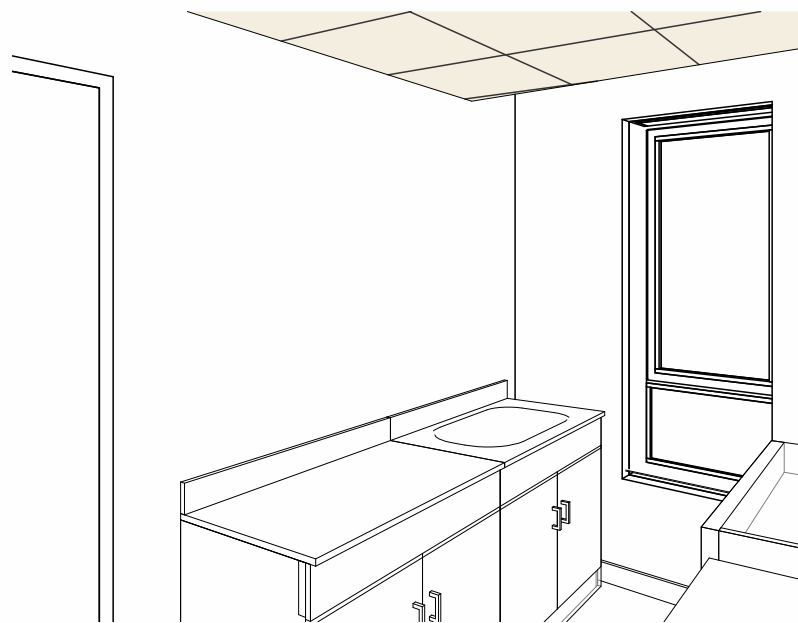




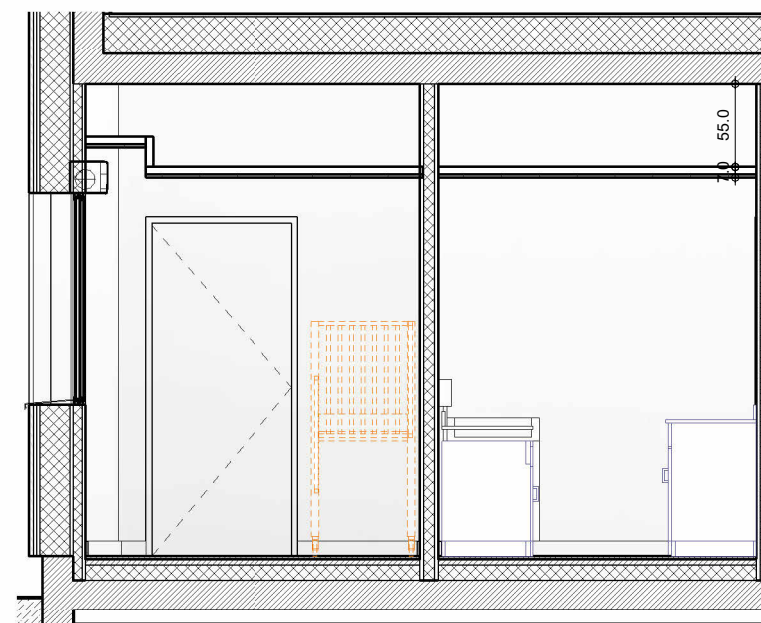
Coupe change BB'
1 : 50



Plan change + nurserie
1 : 50



Vue-1-entrées salle de change + nurserie

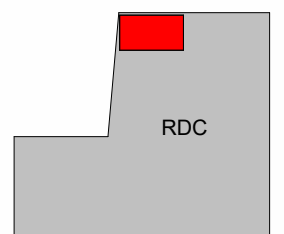


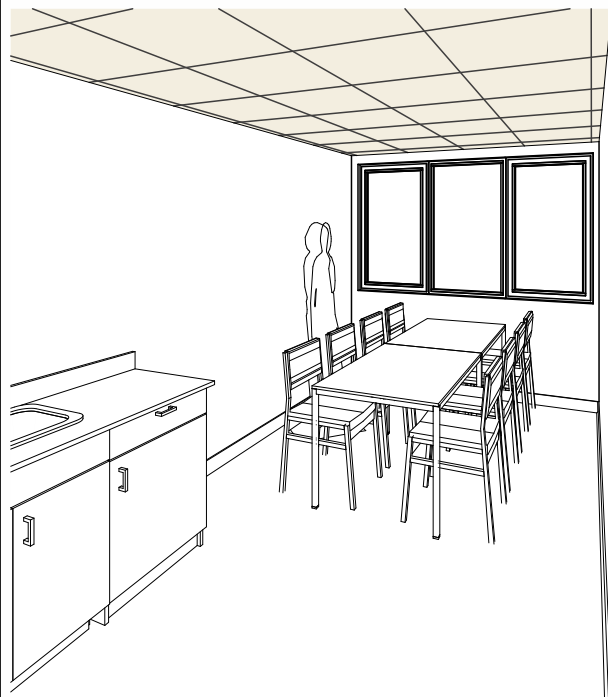
Coupe change AA'
1 : 50

Mobilier :

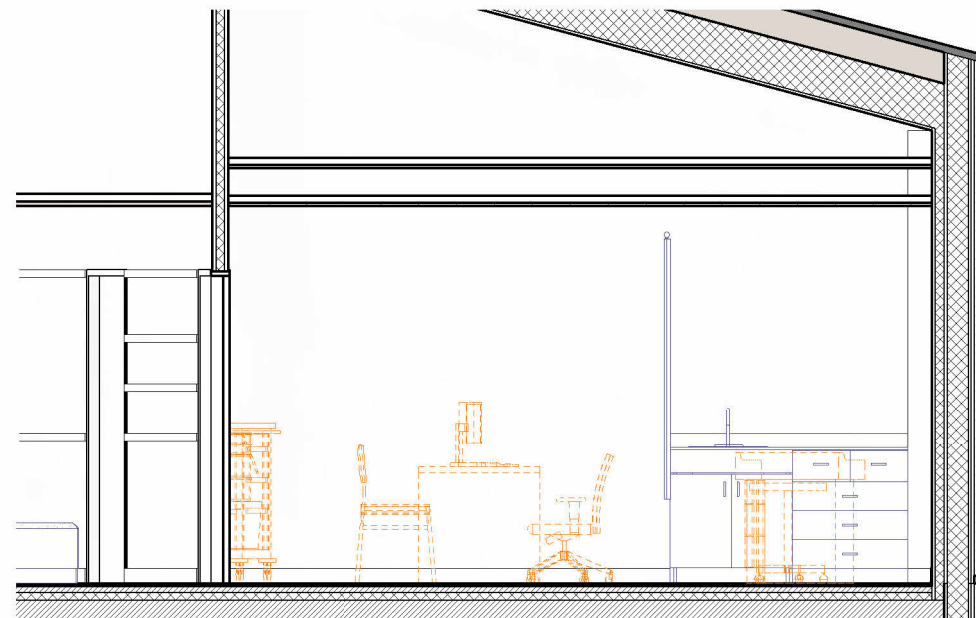
- ① Tables de change repliables
- ② Baignoire + meuble change
- ③ Lits enfants 70 x 140 cm

Surface change = 8,5 m²



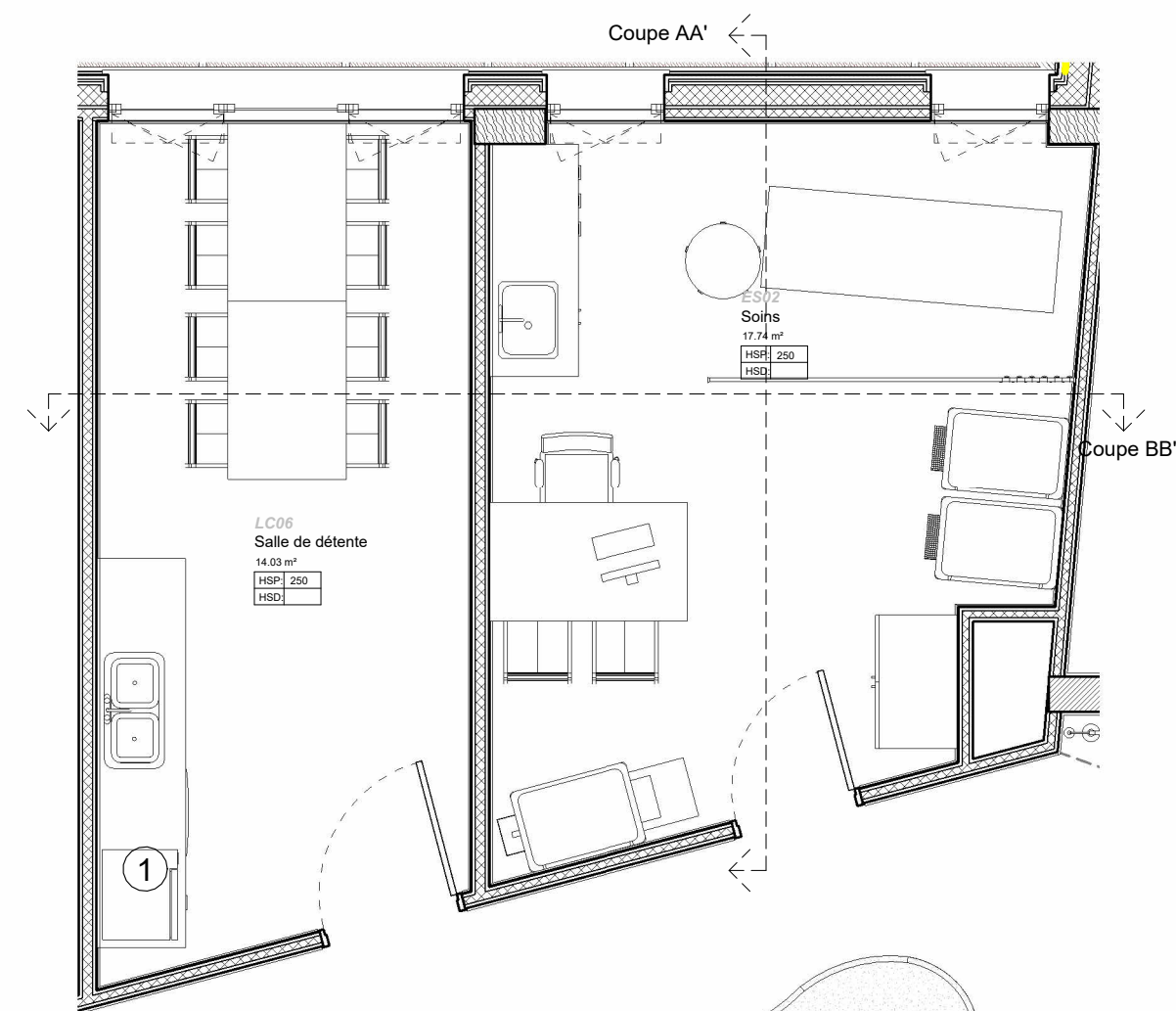


Vue-1-Salle de détente



Coupe Dortoir / biberonnerie AA'
1 : 50

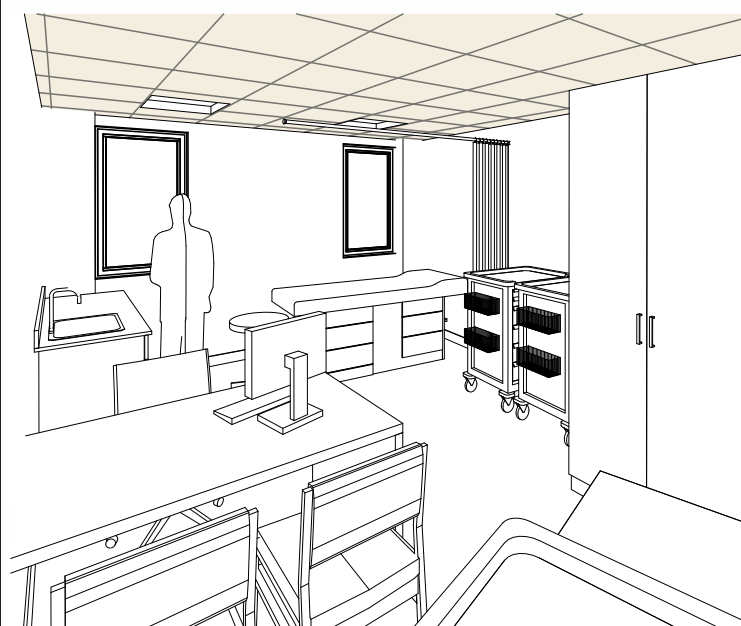
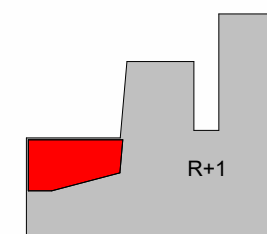
Surface = 32 m² env.
(Détente 14 m² + Biberonnerie 8 m² +
Dortoir 10 m²)



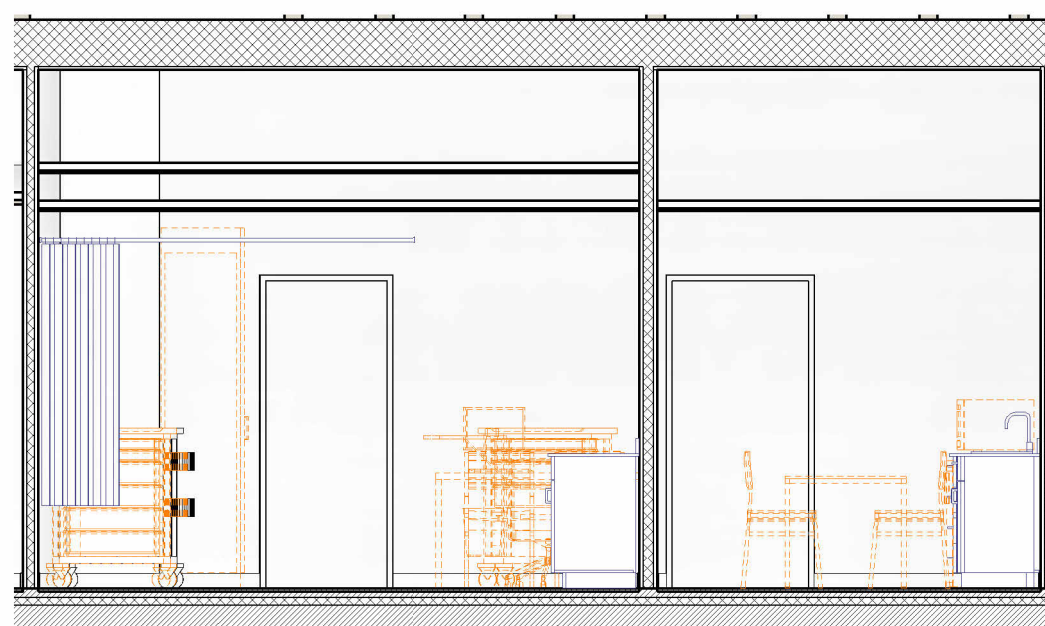
Plan salle détente + biberonnerie + dortoir
1 : 50

Mobilier :

- ① Plan de travail + Meubles hauts et bas
- ② Equipements divers cuisine
- ③ Berceaux (x4) + baignoire
- ④ Châssis 100 x 110 cm allège h = 100 cm



Vue-2-Dortoir soins



Coupe Détente / dortoir BB'
1 : 50



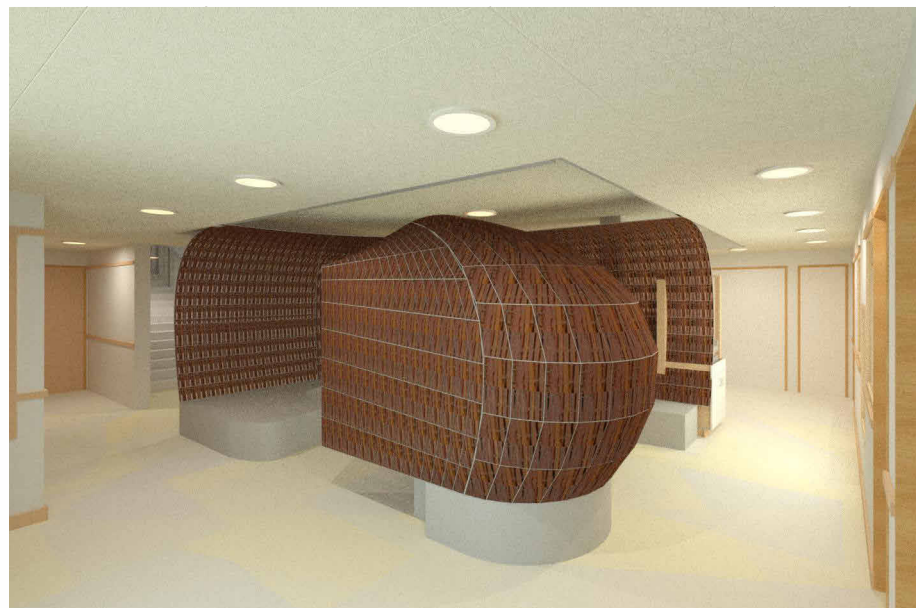
Construction du Centre de Périnatalité 113
au Centre Hospitalier Henri
Laborit - Poitiers (86)

CENTRE HOSPITALIER HENRI LABORIT

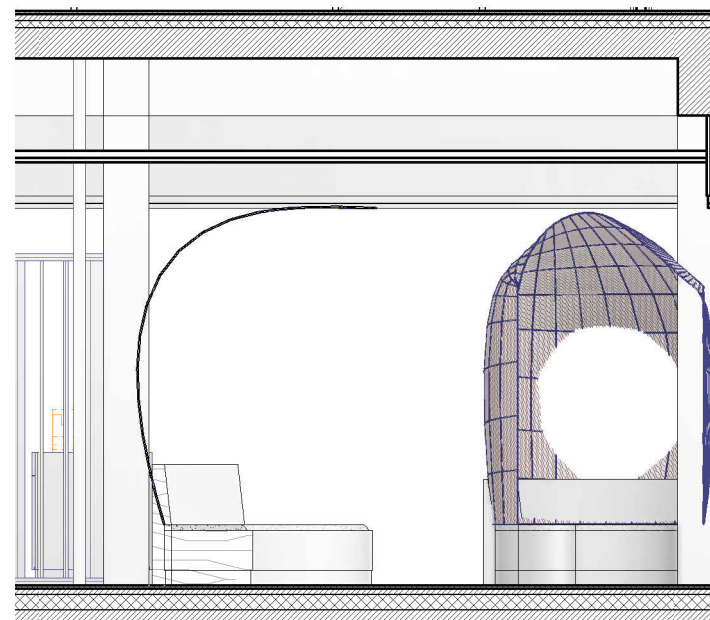
MAÎTRISE D'ŒUVRE
MÛRISSERIE
ARCHITECTURE PARENT+RACHDI

DET04

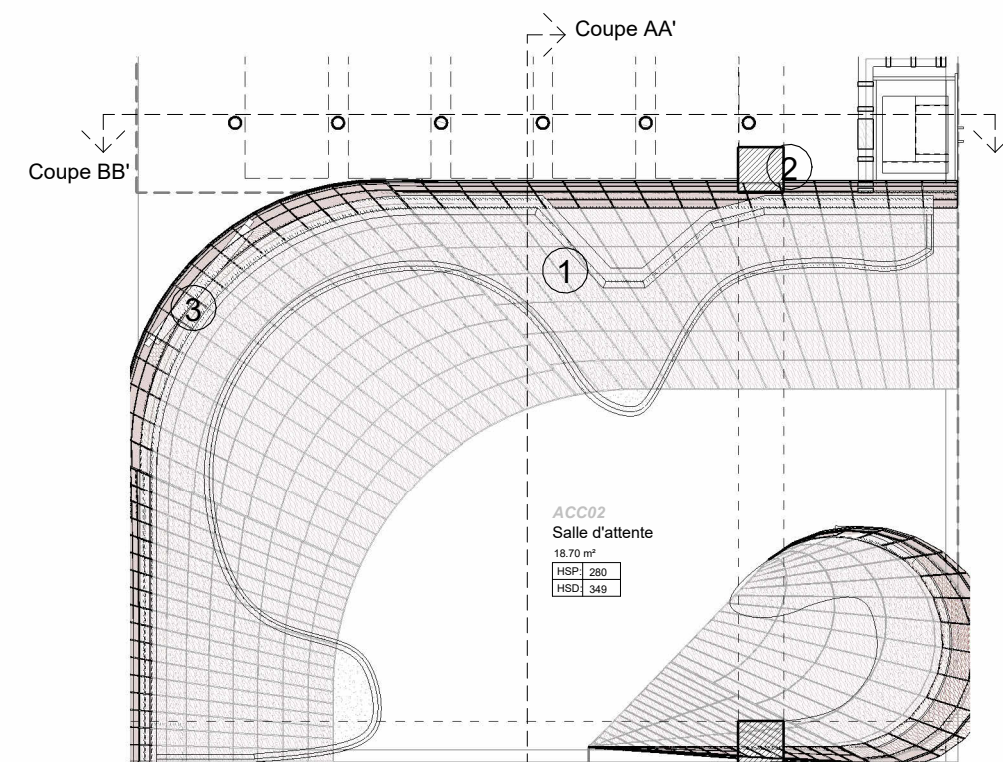
Espace détente/soins



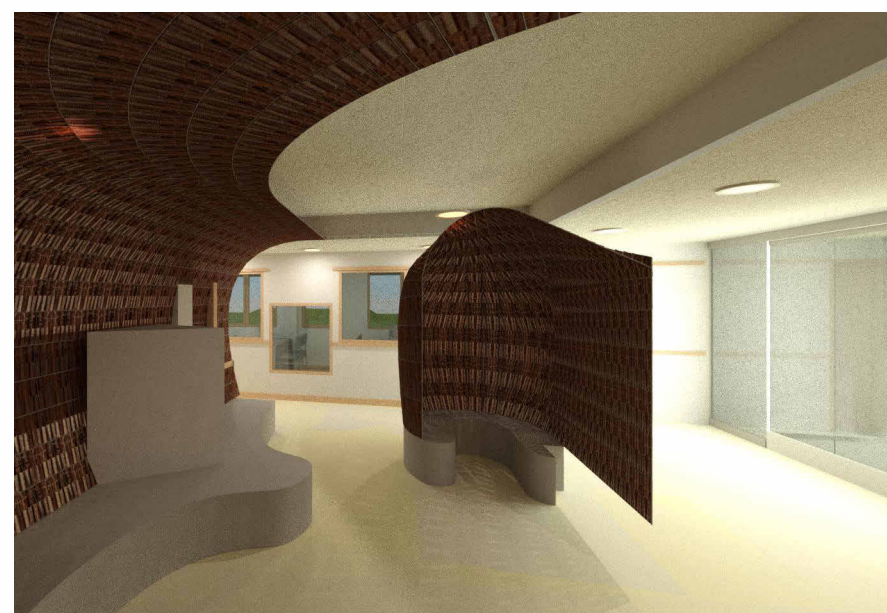
Vue-1-Espace d'attente



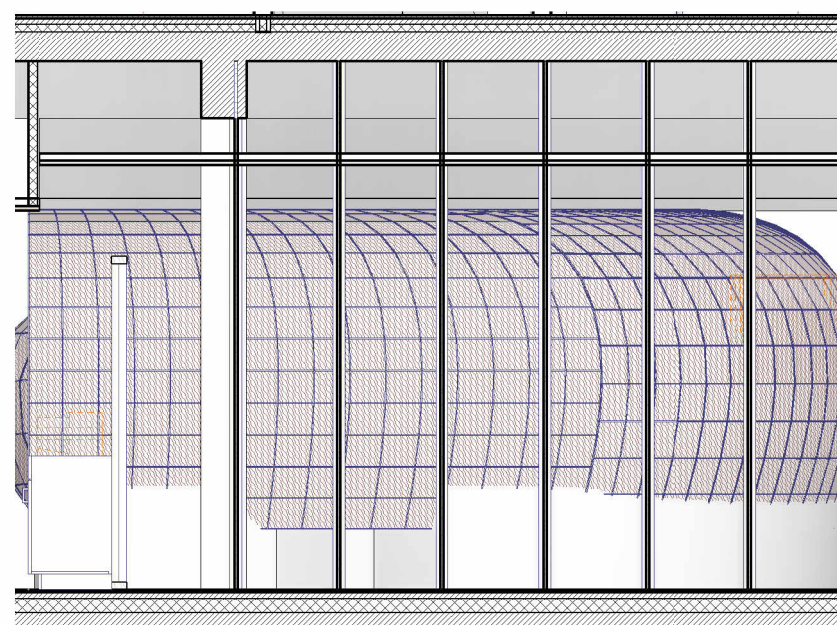
Coupe attente / poussettes AA'
1 : 50



Plan espace d'attente / poussettes
1 : 50



Vue-2-Espace d'attente_1
1 : 1

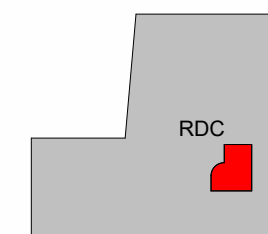


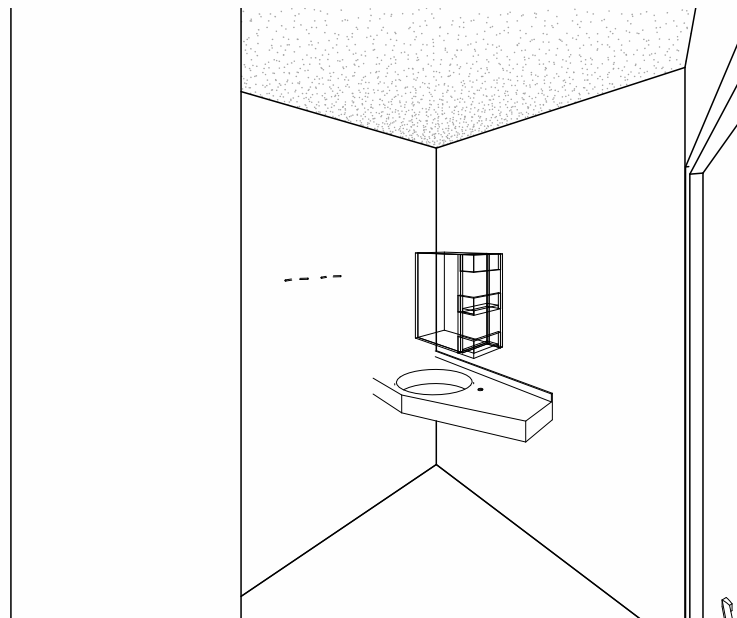
Coupe attente / poussettes BB'
1 : 50

Mobilier :

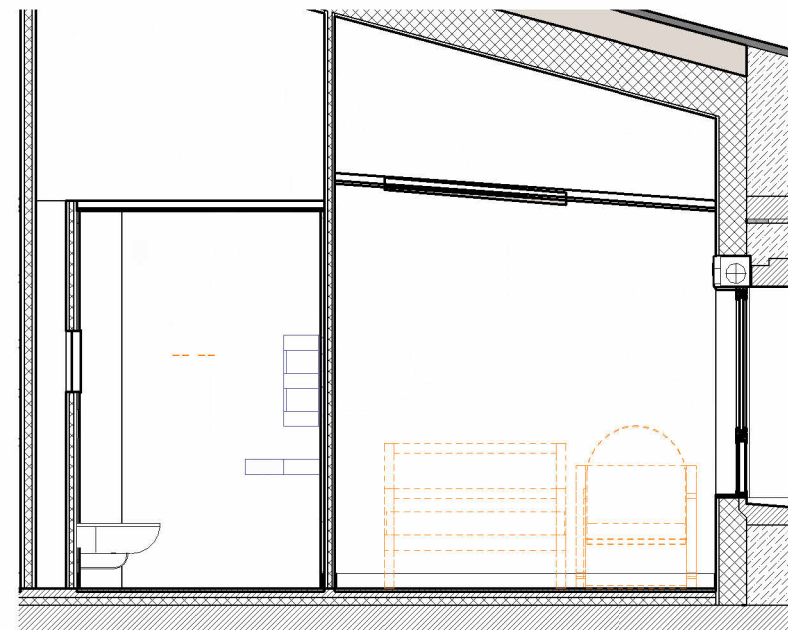
- ① Banquette + alcôves
- ② Casiers + accroche poussettes
- ③ Claustat bois + parois acoustiques

Surfaces = 27 m²
(Salle d'attente 18,5 m² + poussettes 8,5 m²)

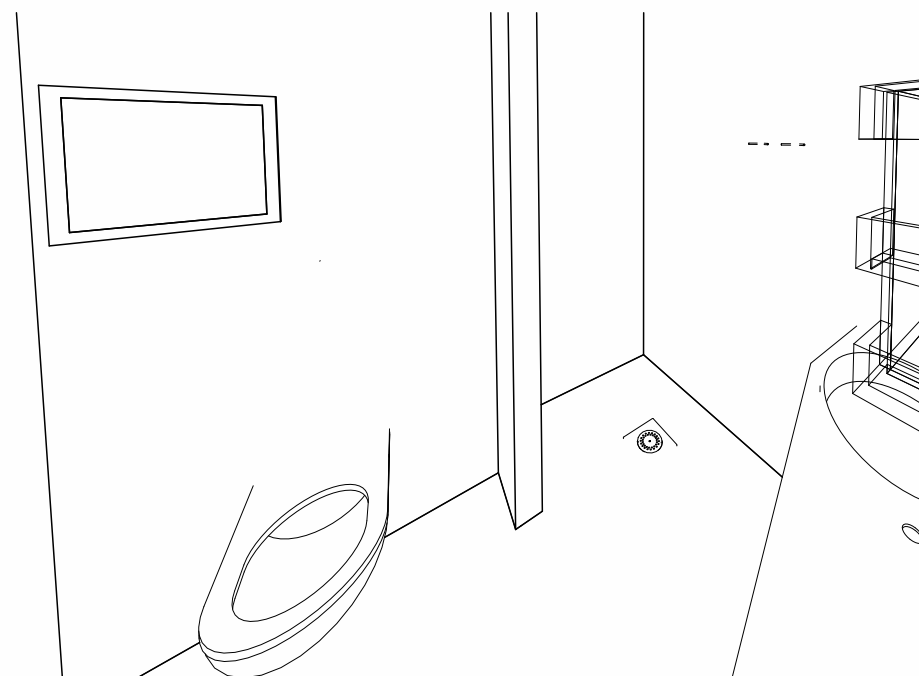




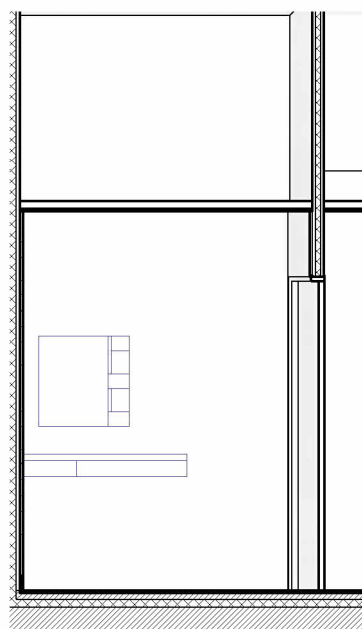
Vue-1-Salle de bain type



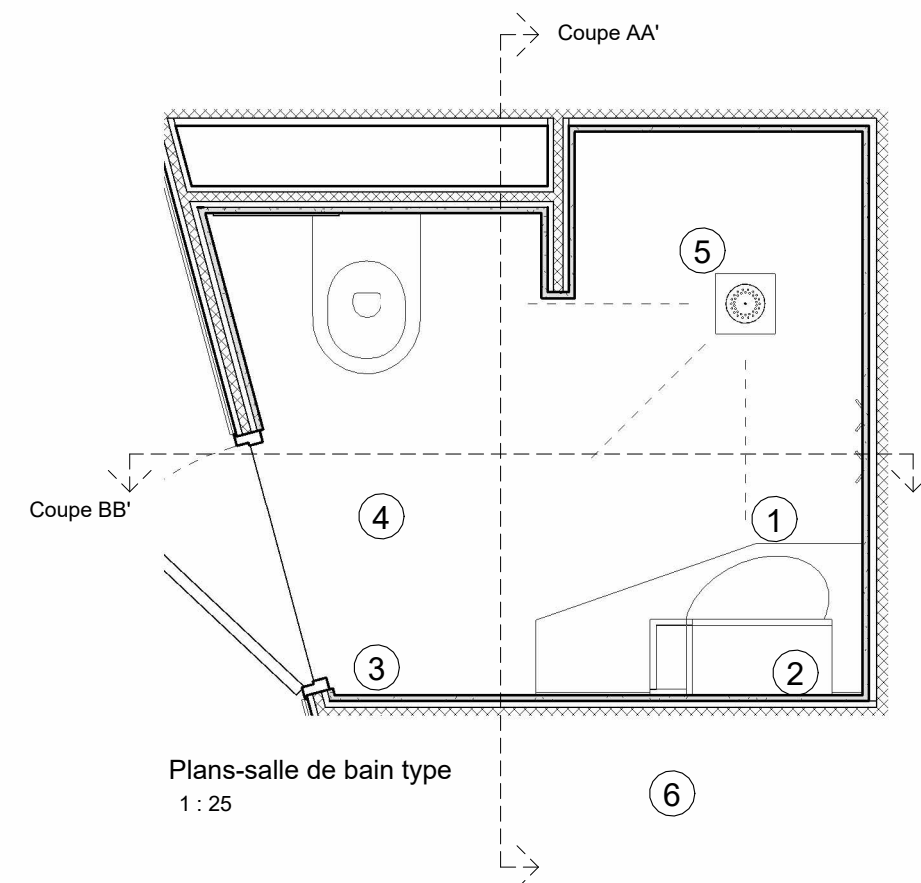
Coupe salle de bain type AA'
1 : 50



Vue-2-Salle de bain type



Coupe salle de bain type BB'
1 : 50

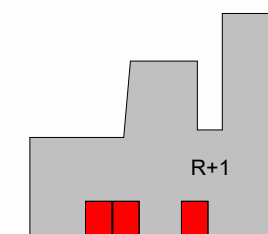


Plans-salle de bain type
1 : 25

Mobilier :

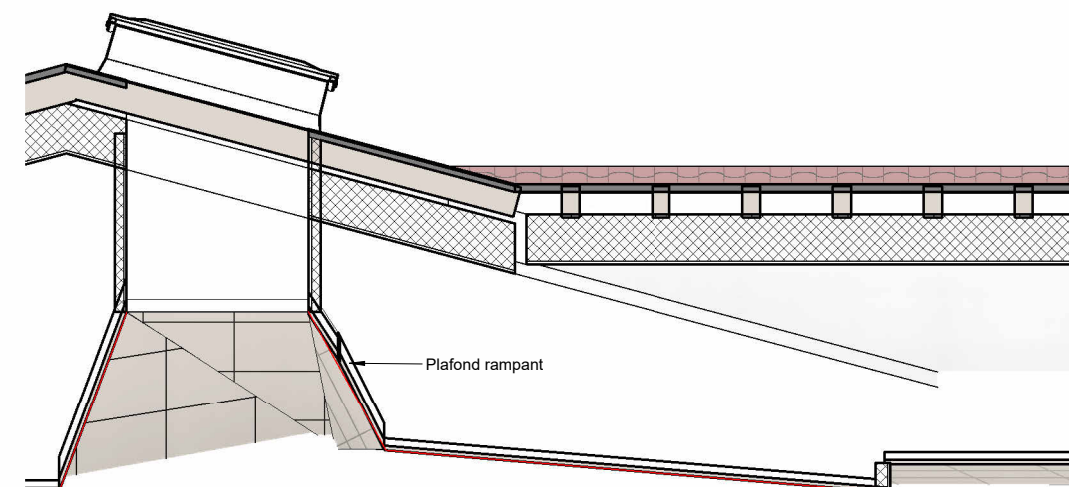
- ① Lit 120 x 210 cm
- ② Lit accompagnant
- ③ Placard intégré 90 x 50 cm
- ④ Bureau + meuble change
- ⑤ **SDE 3,6 m² env. : wc, vasque, receveur 80 x 100 cm**
- ⑥ Châssis 140 x 80 cm sur allège pleine

Surface chambres = 15.5 m² env.

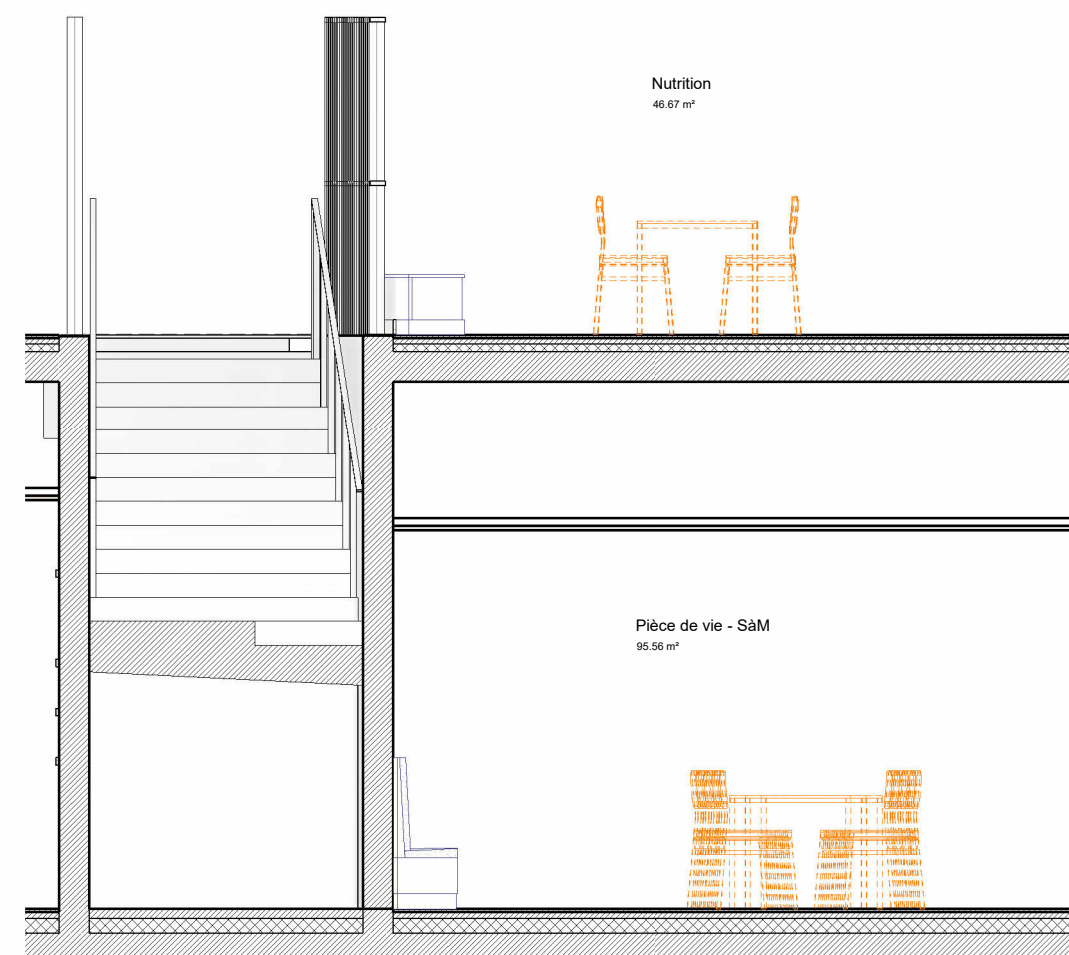


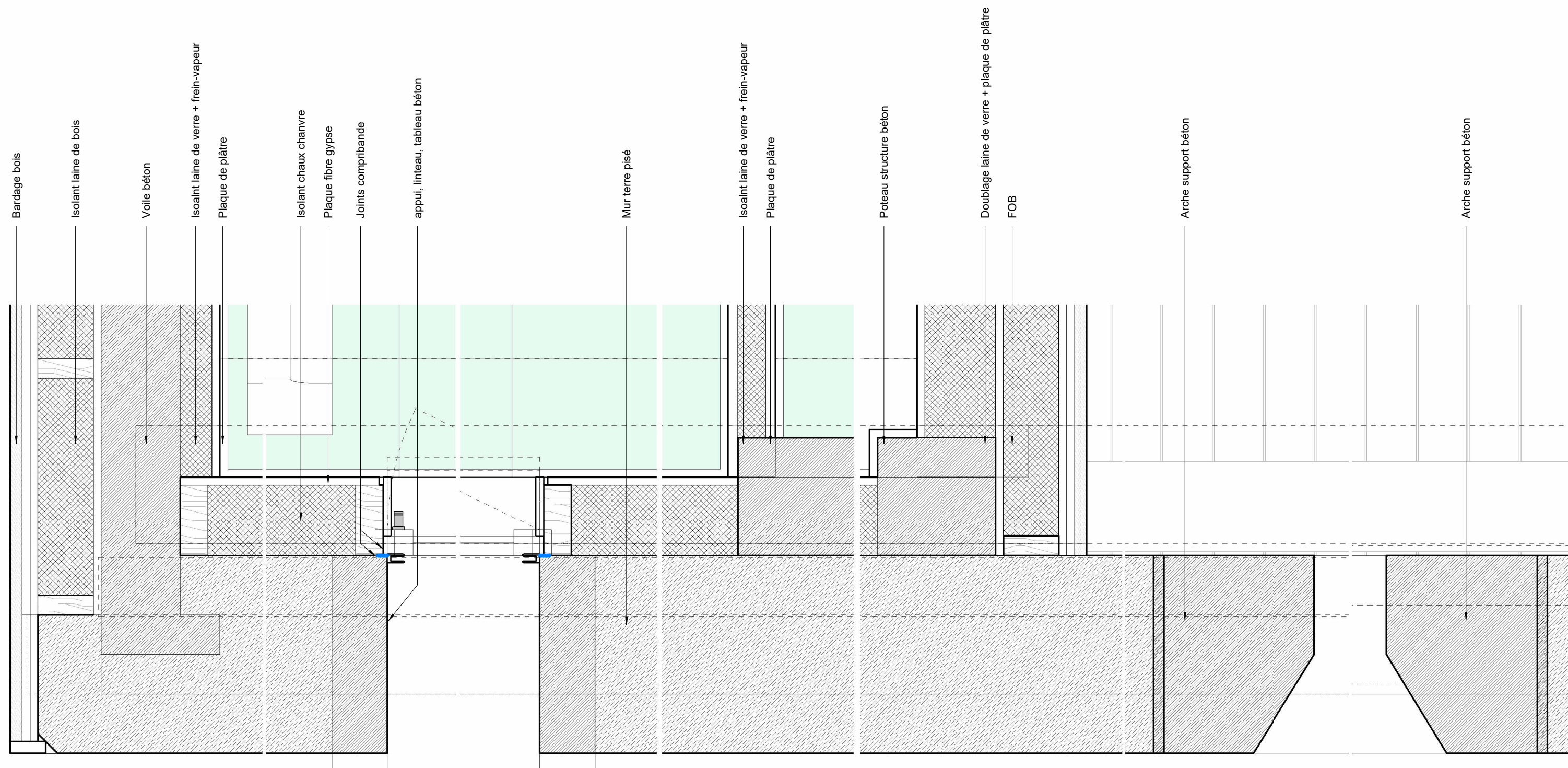


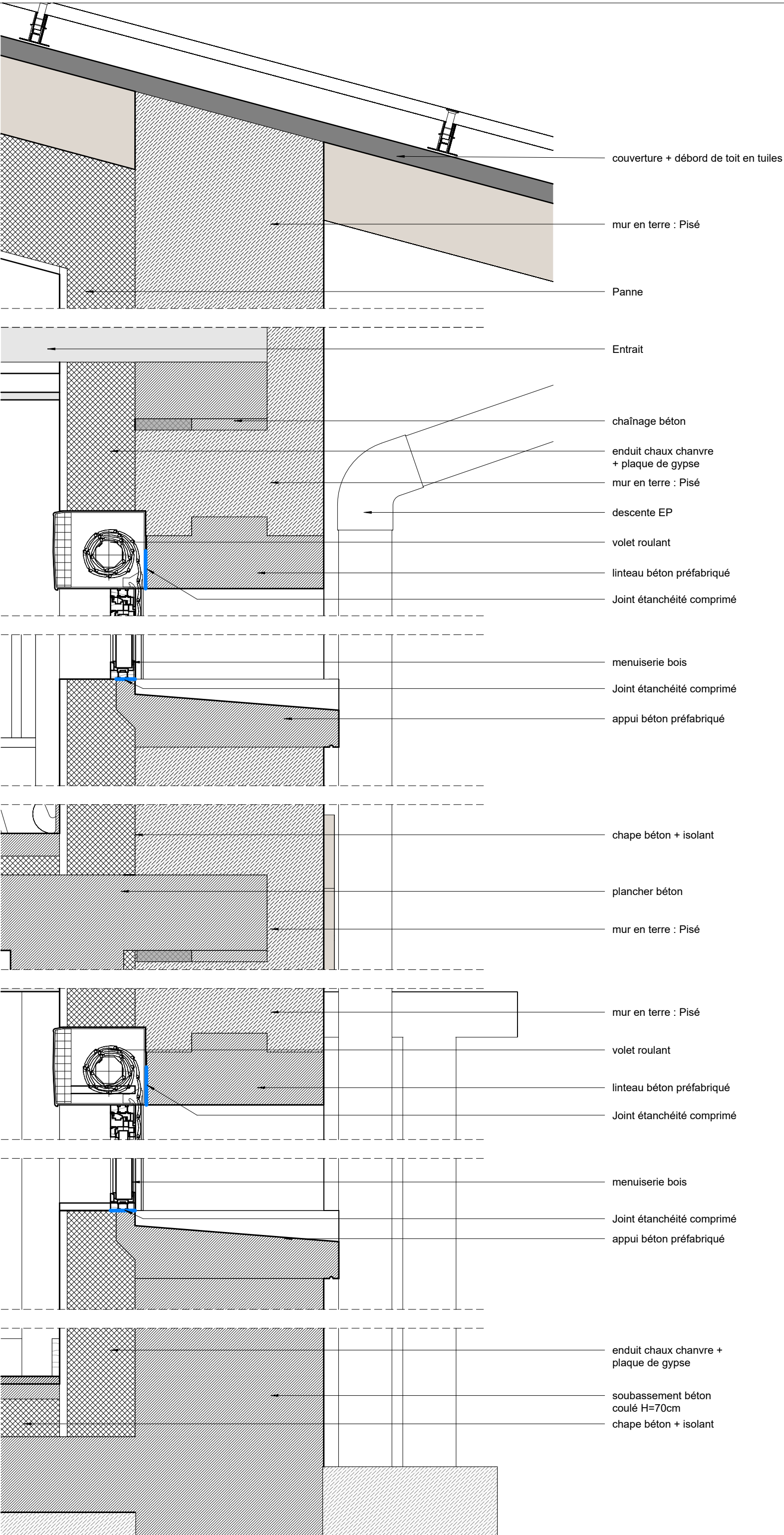
Coupe-01-Plafond-rampant-escalier
1 : 50



Coupe-02-Plafond-rampant-escalier
1 : 50







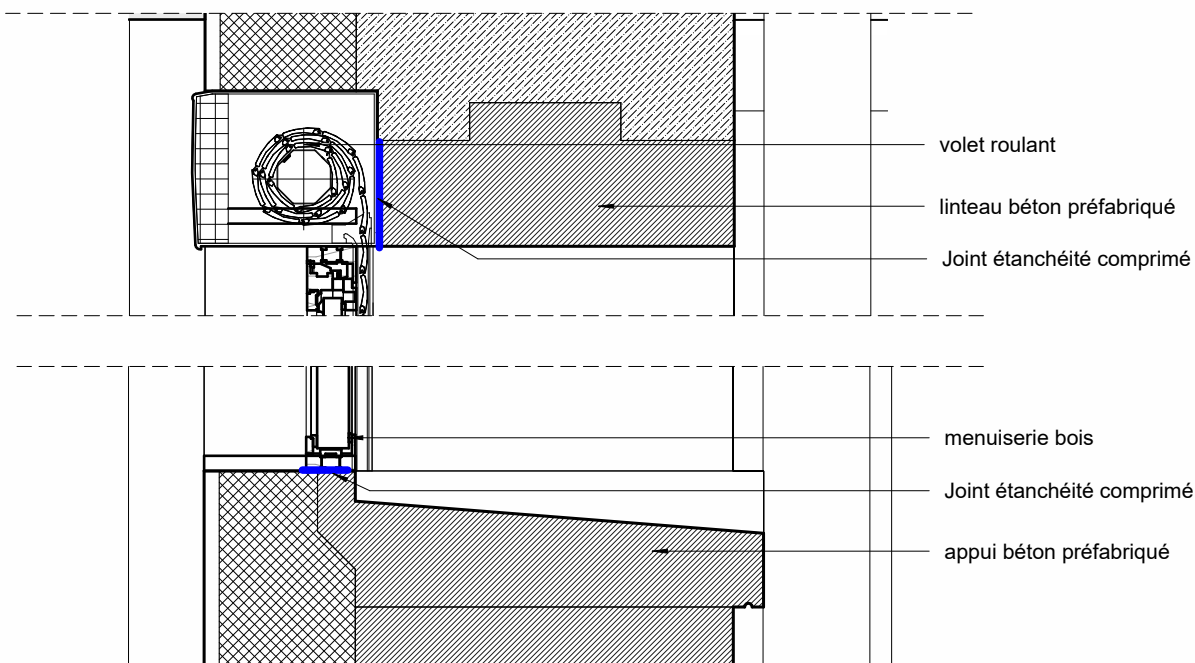
Construction du Centre de Périnatalité 113
au Centre Hospitalier Henri
Laborit - Poitiers (86)

CENTRE HOSPITALIER HENRI LABORIT

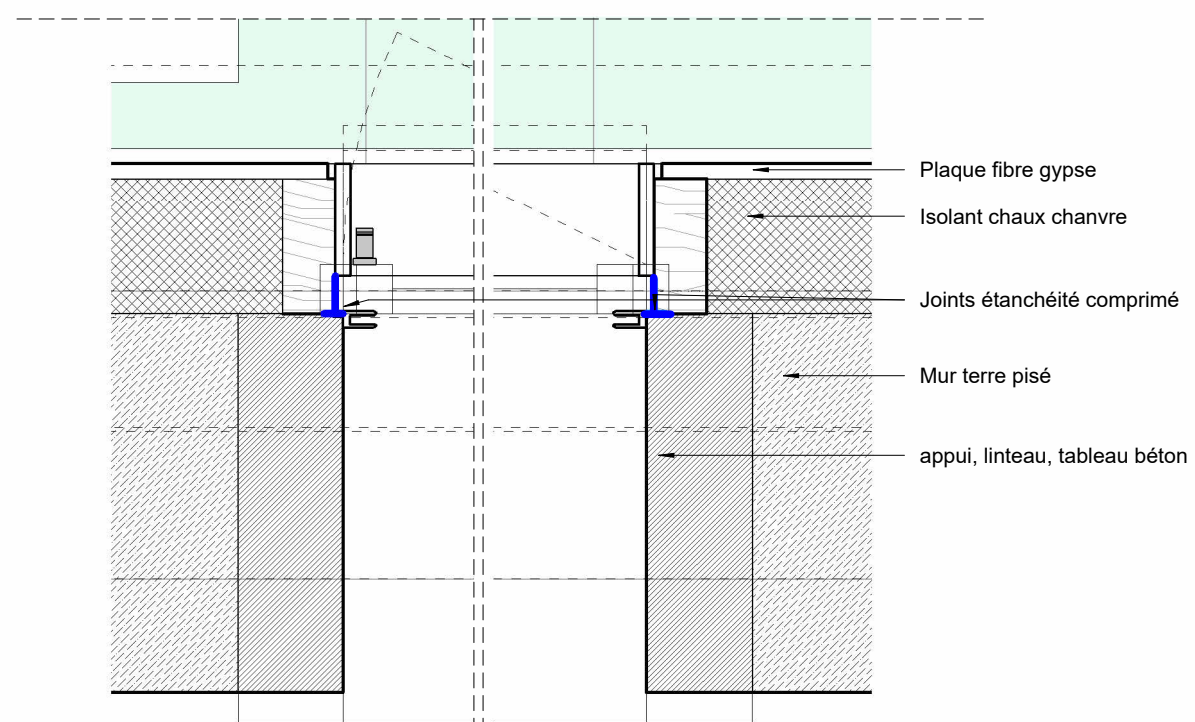
MAÎTRISÉ D'ŒUVRE
MÛRISSE
ARCHITECTURE PARENT+RACHDI

Détails sur mur terre crue - coupe - 1/10e

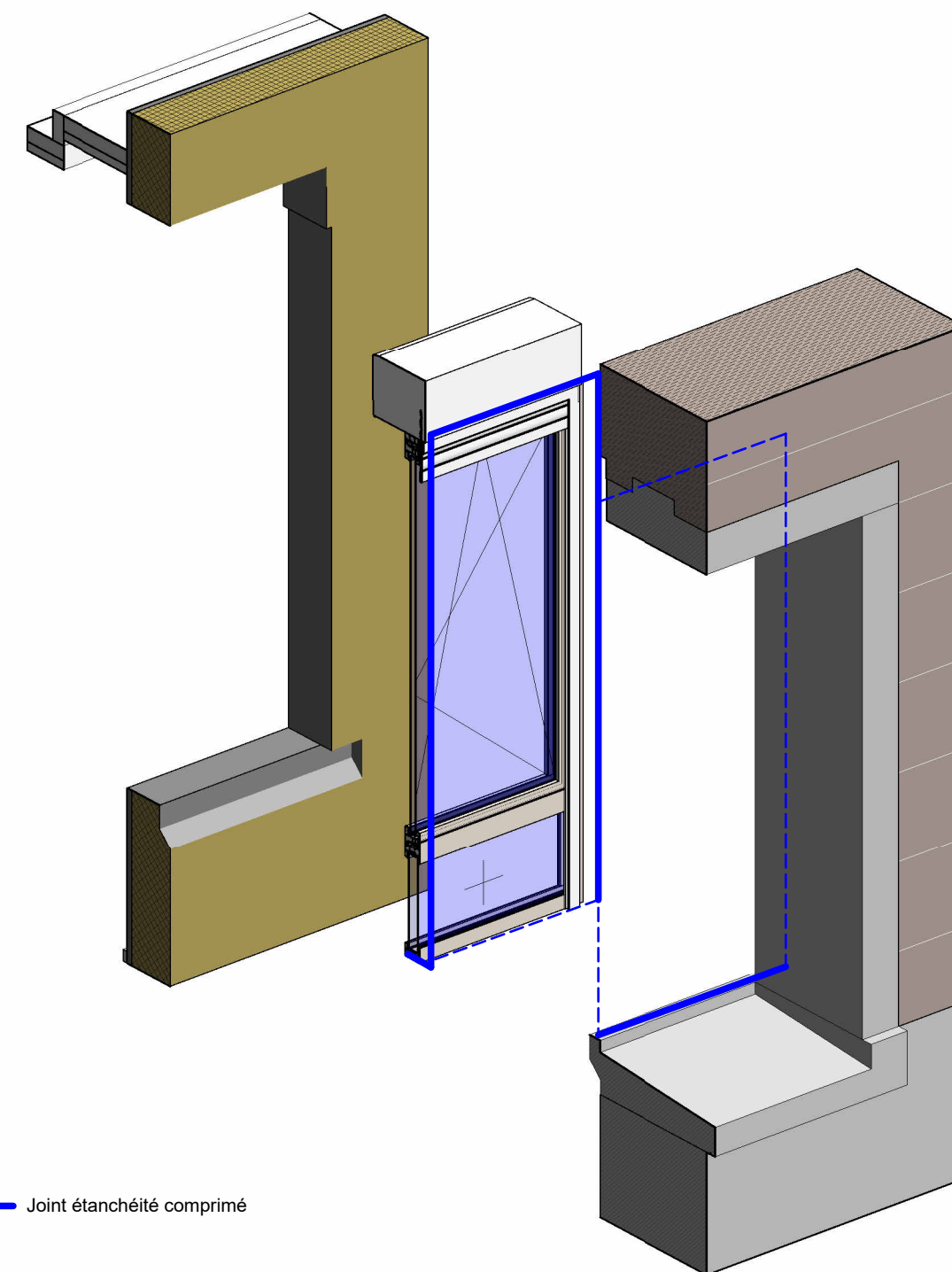
DET09



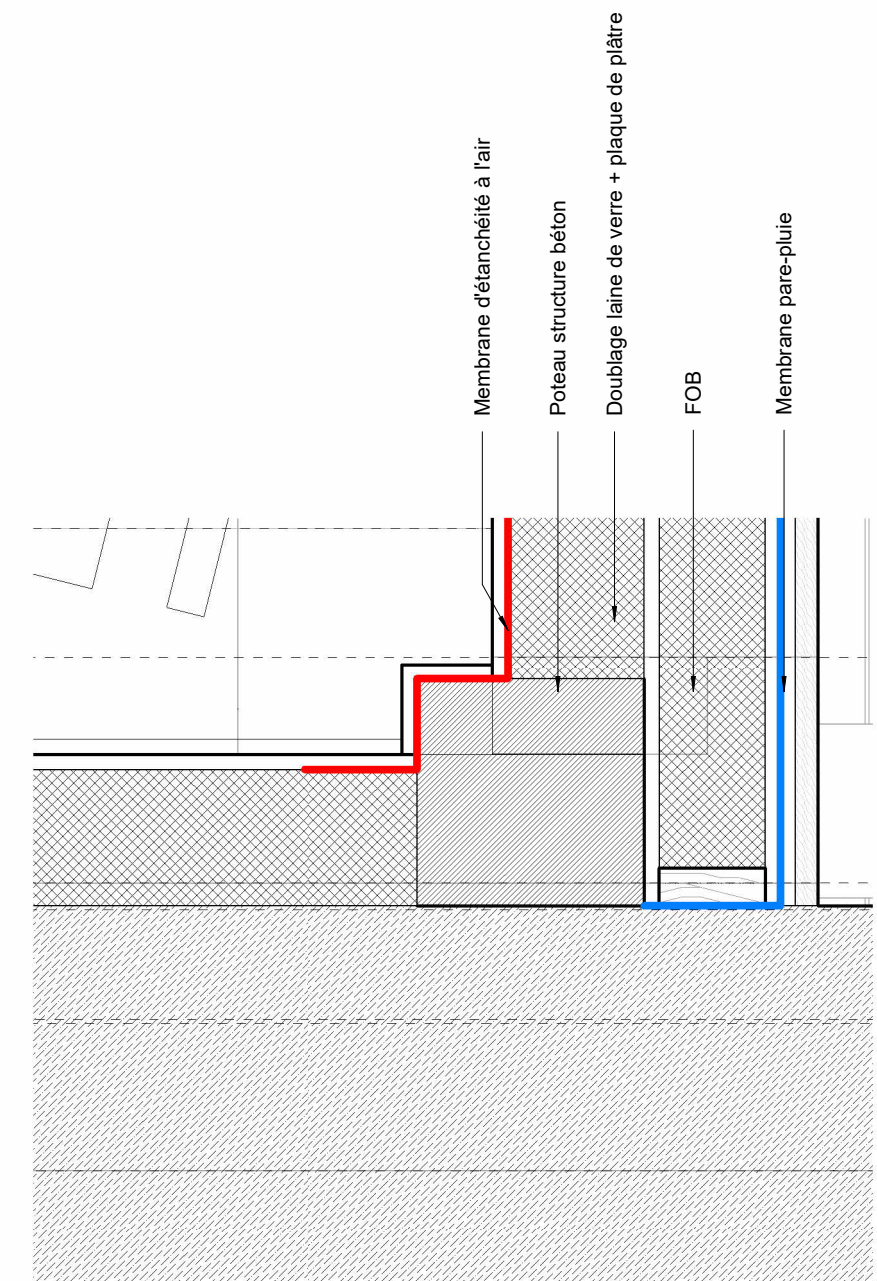
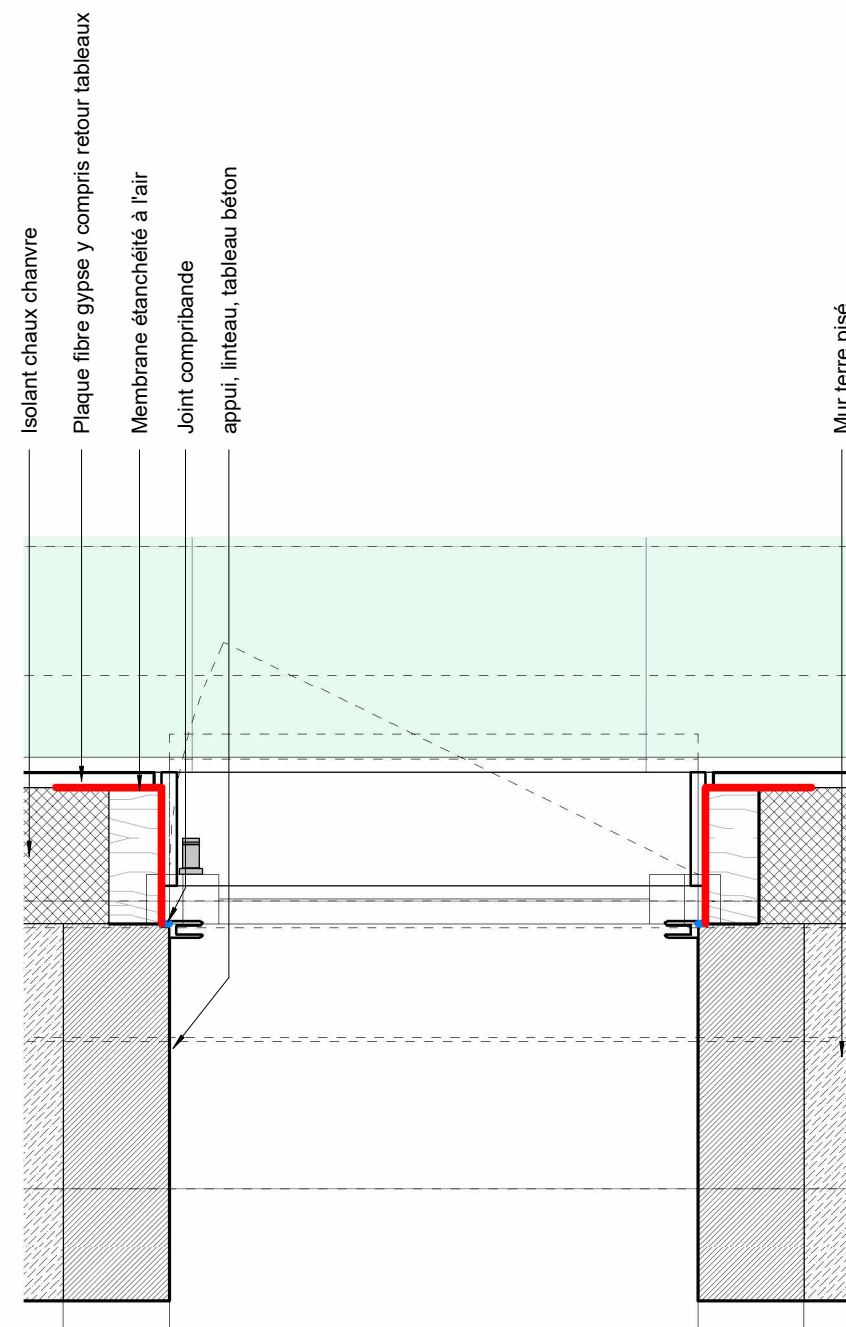
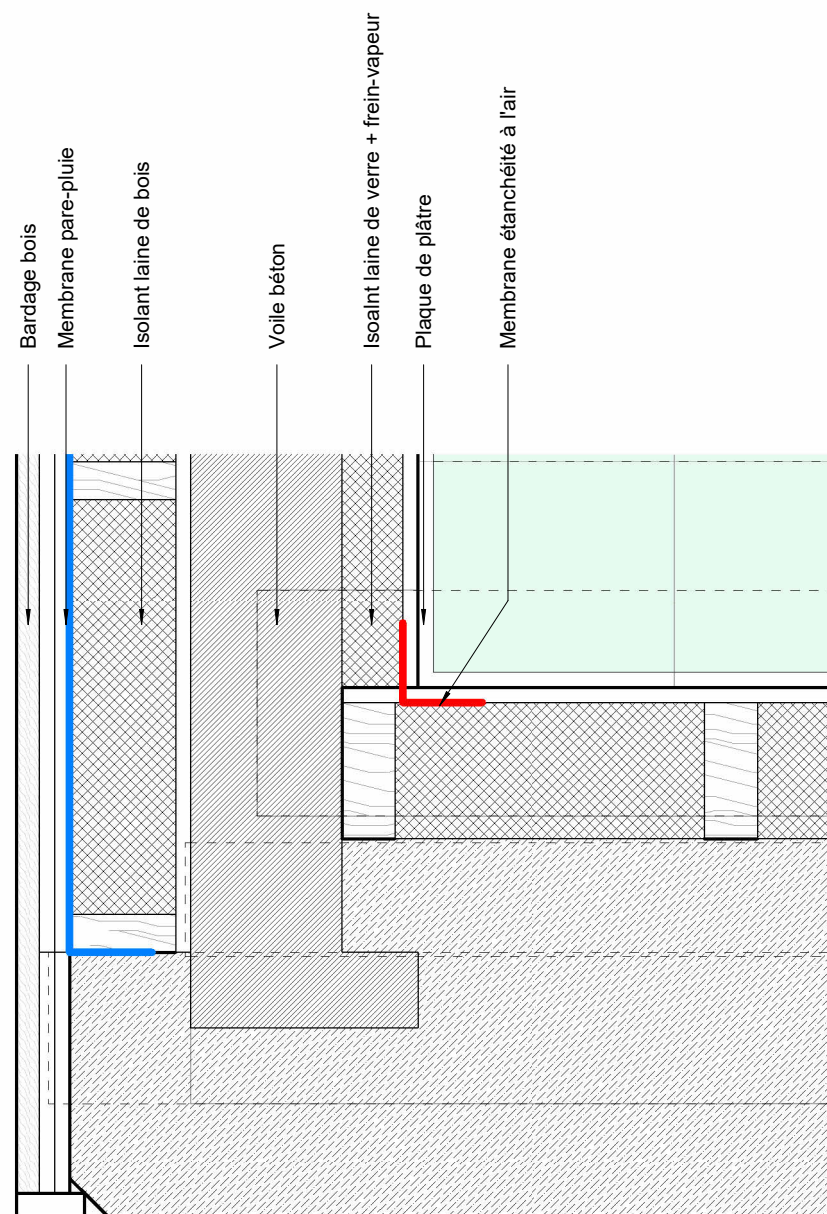
DET10_Coupe_10e
1 : 10

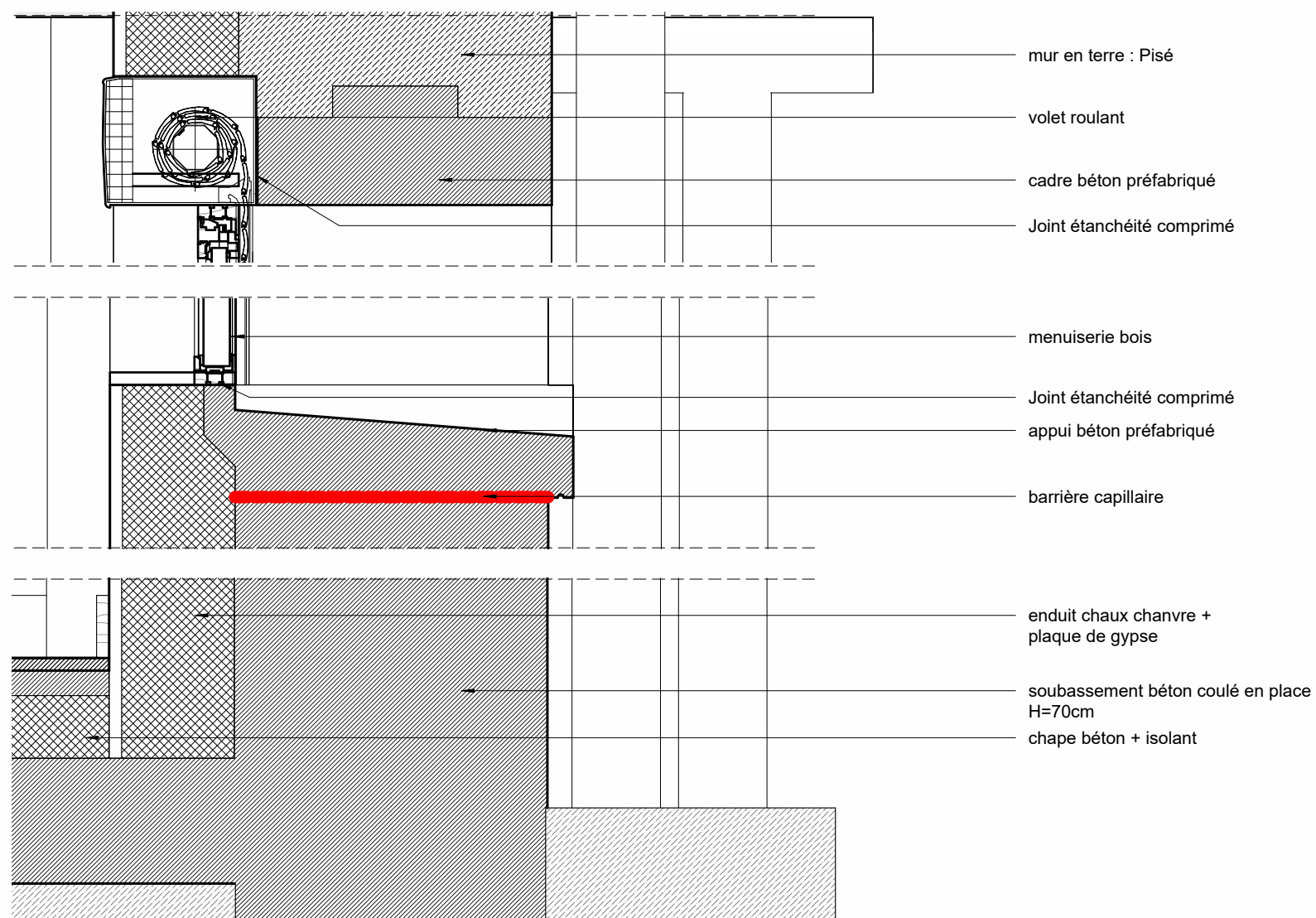


DET10_Plan_10e
1 : 10

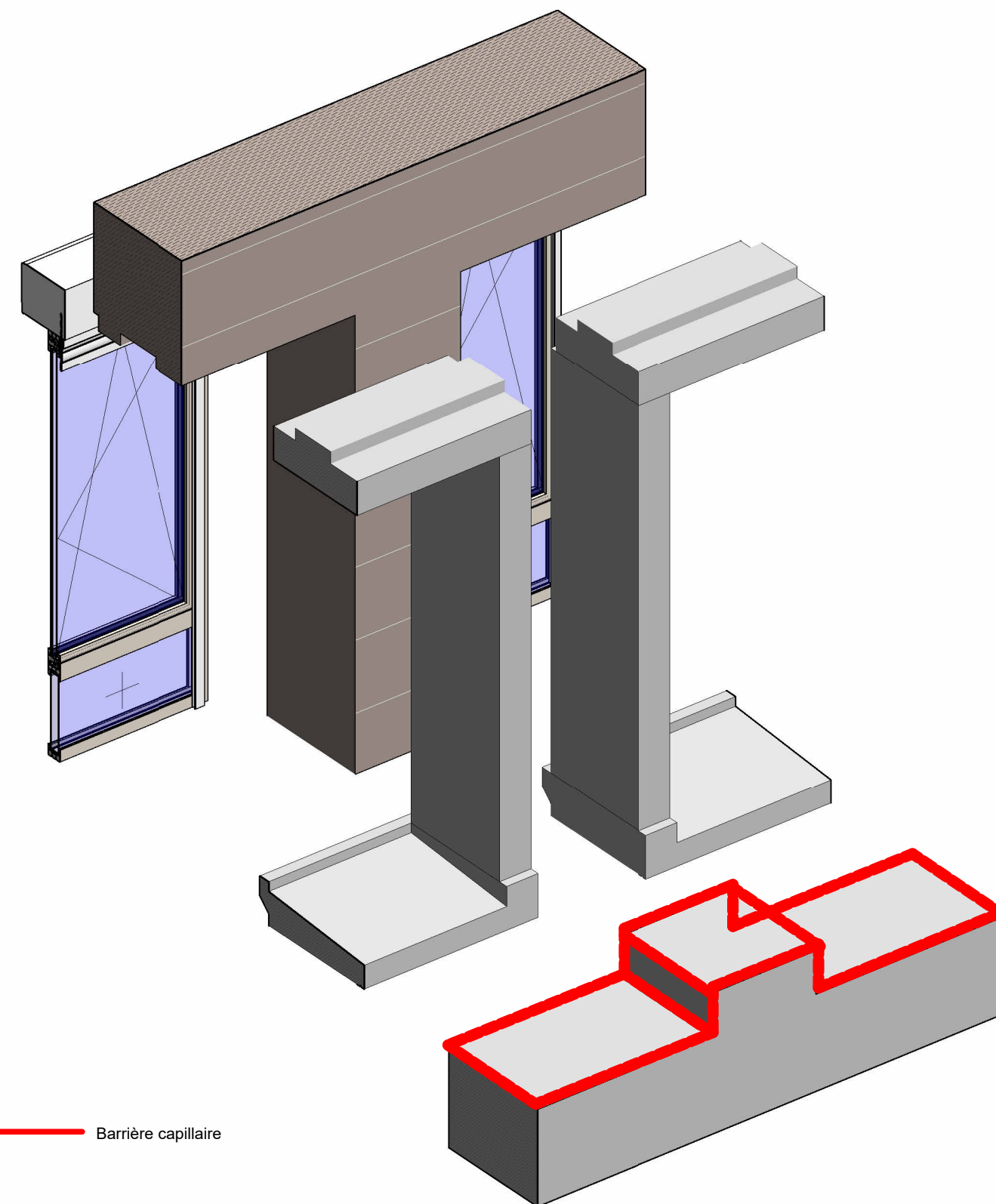


DET10_Axonométrie

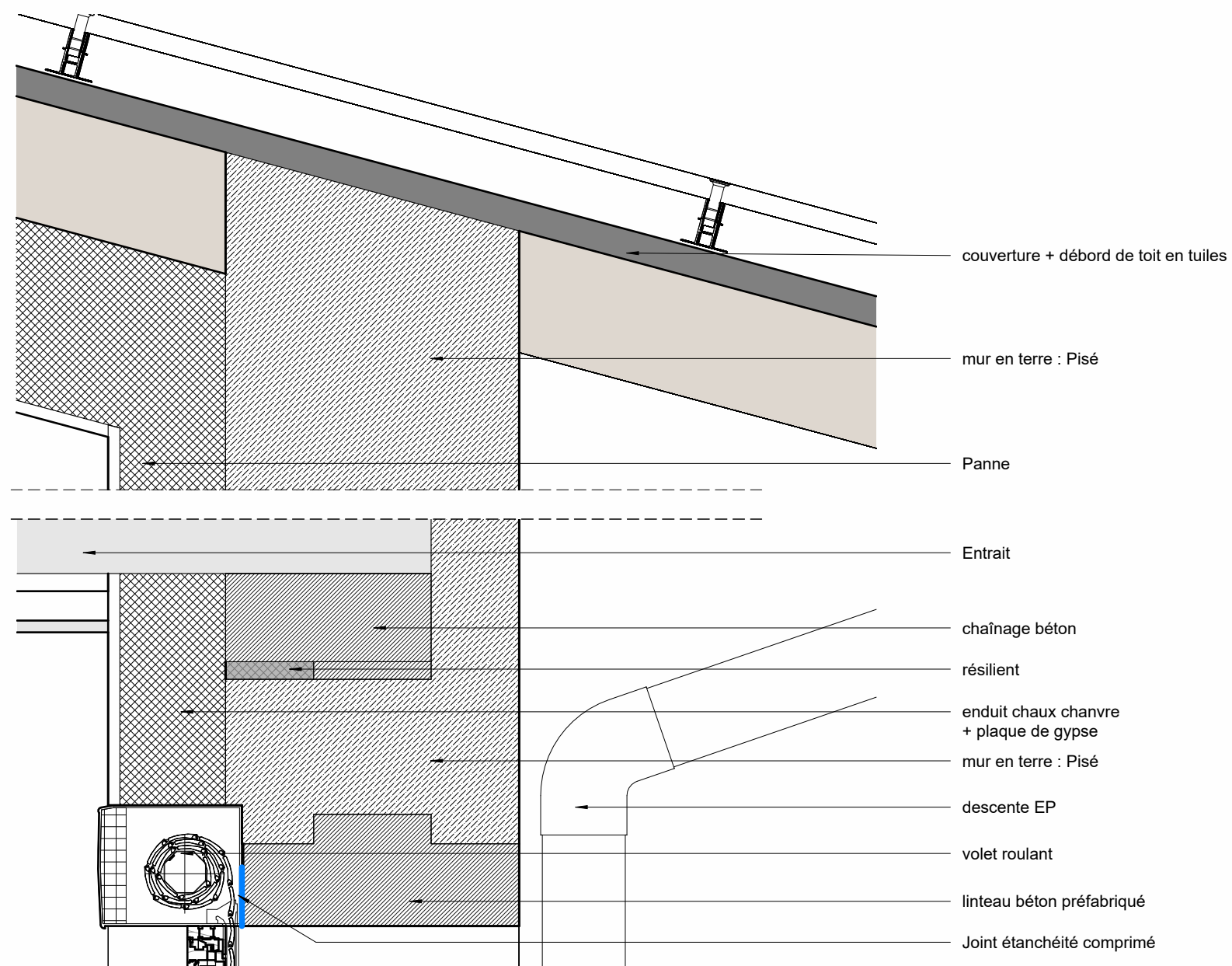




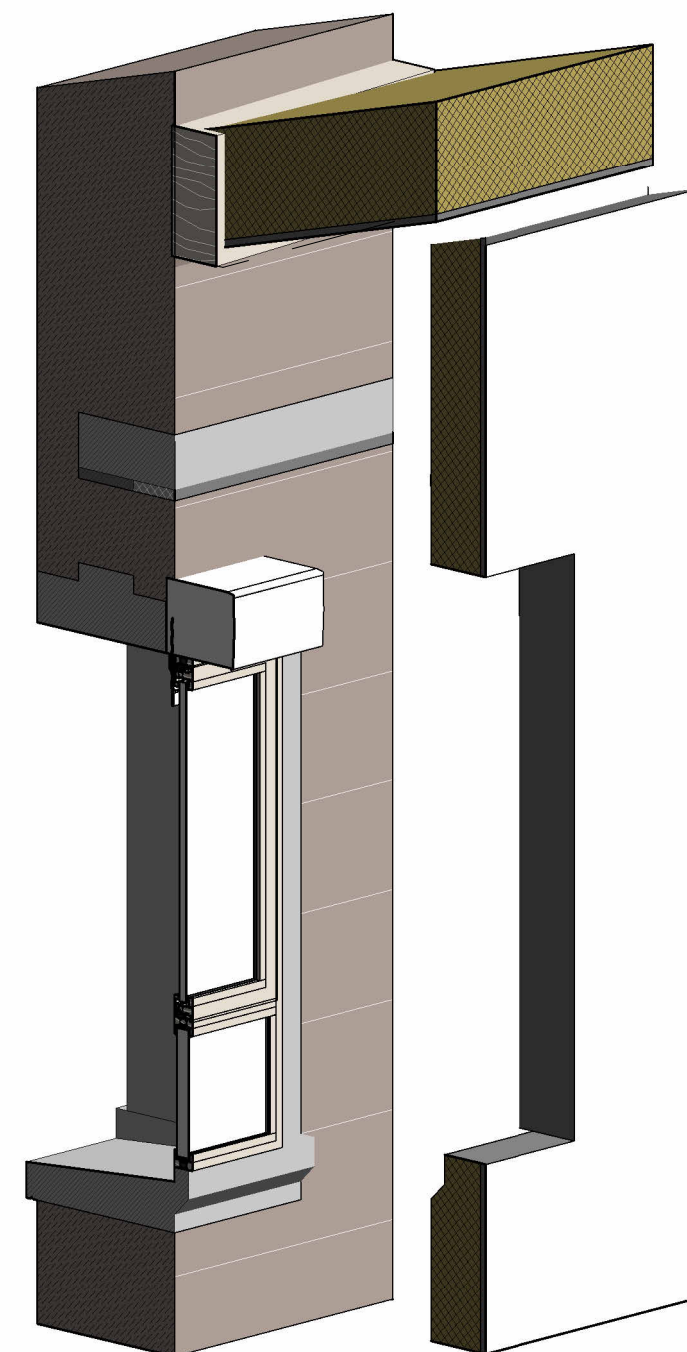
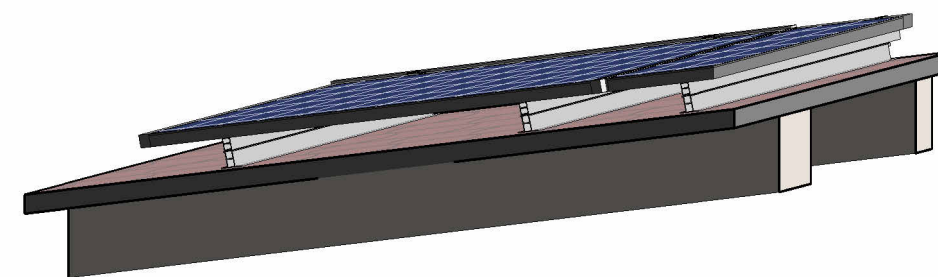
DET12_Coupe_10e
1 : 10



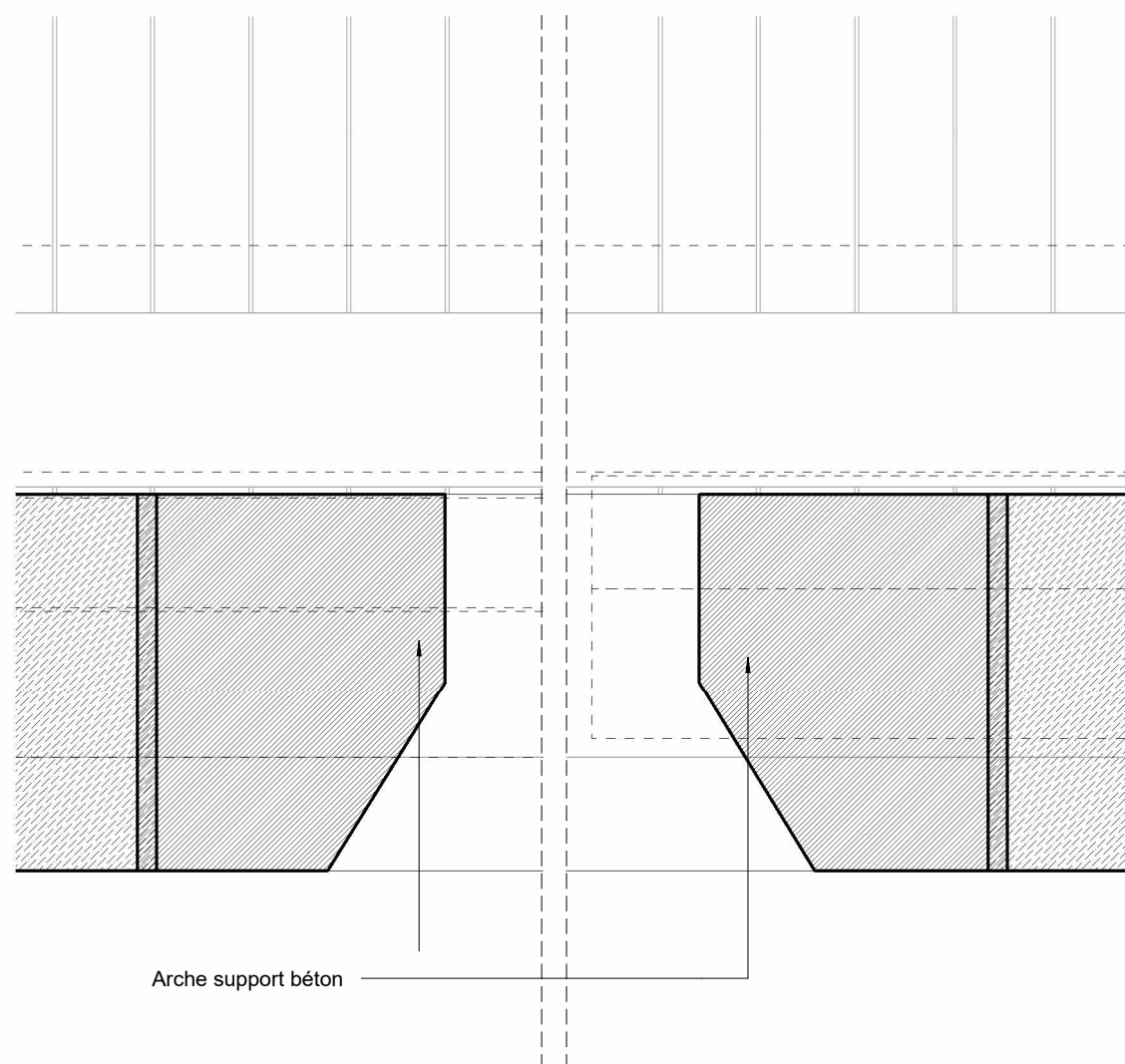
DET12_Axonométrie



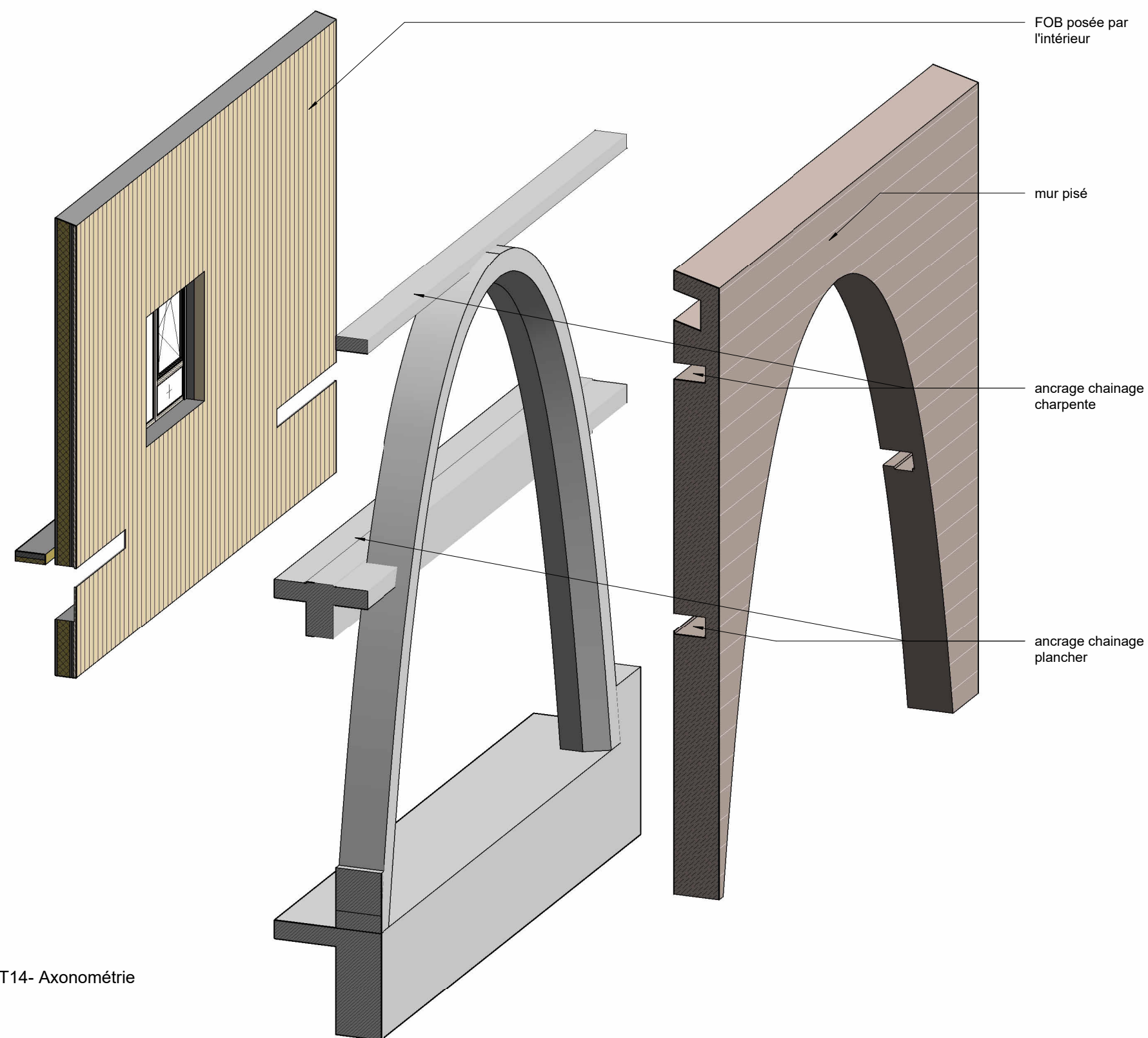
DET13_Coupe_10e
1 : 10



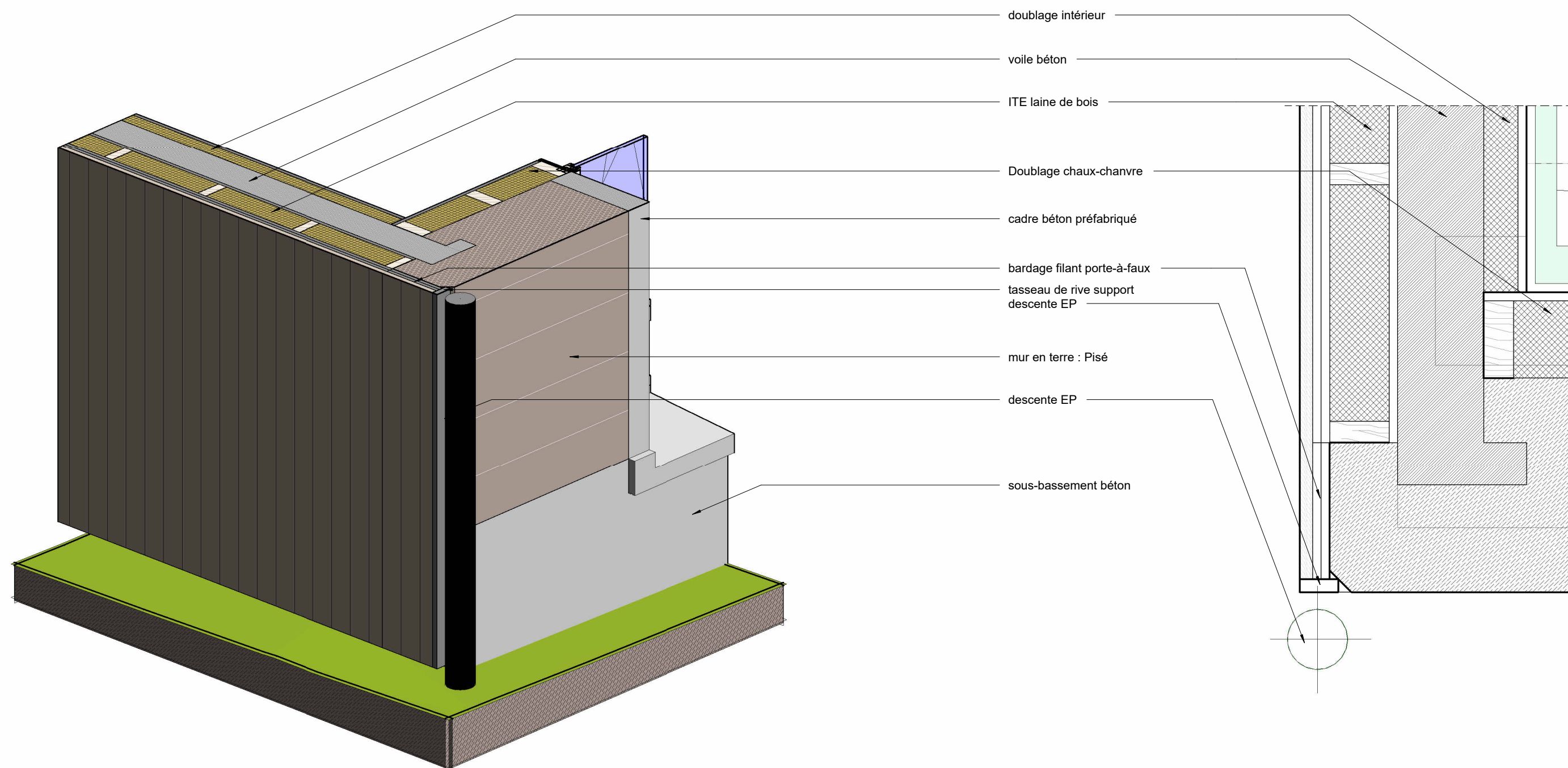
DET13 - Axonométrie

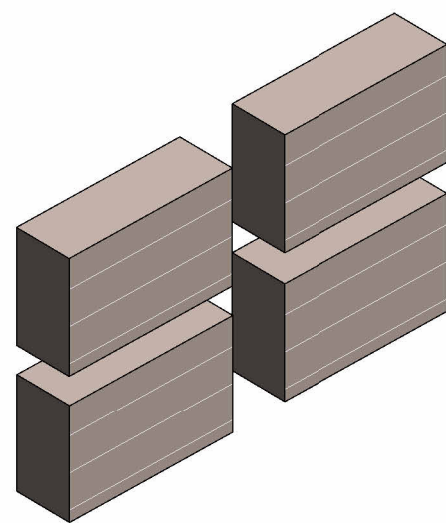


DET14_Plan_10e
1 : 10

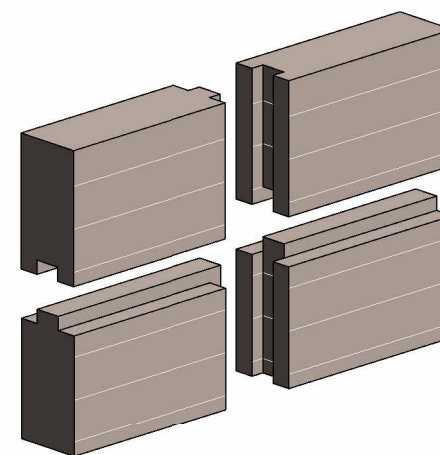


DET14- Axonométrie

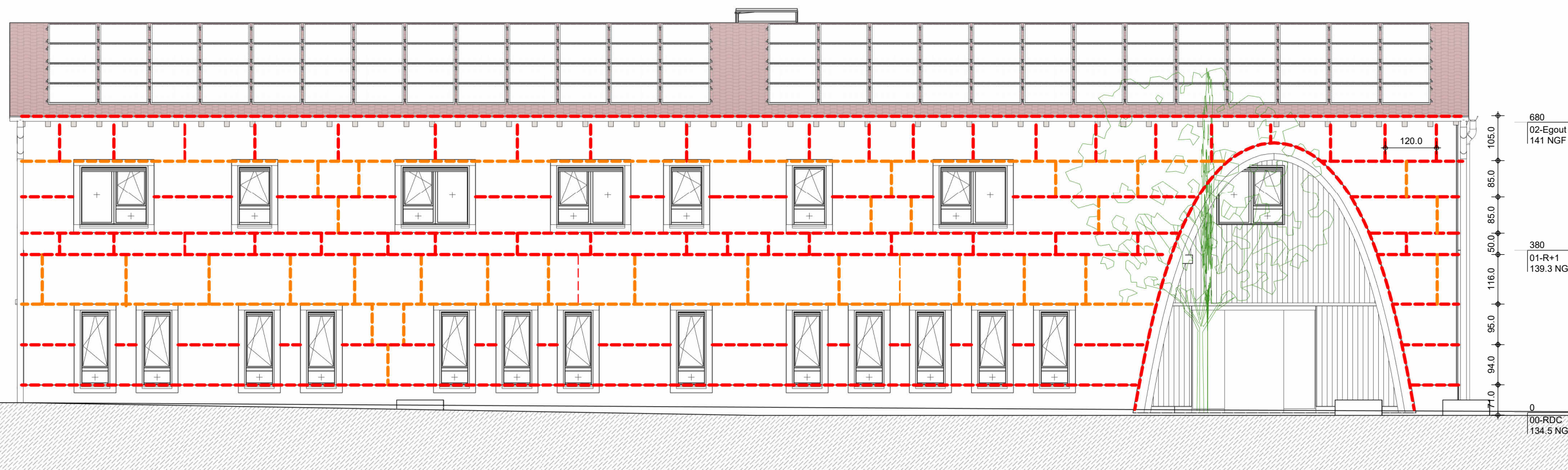
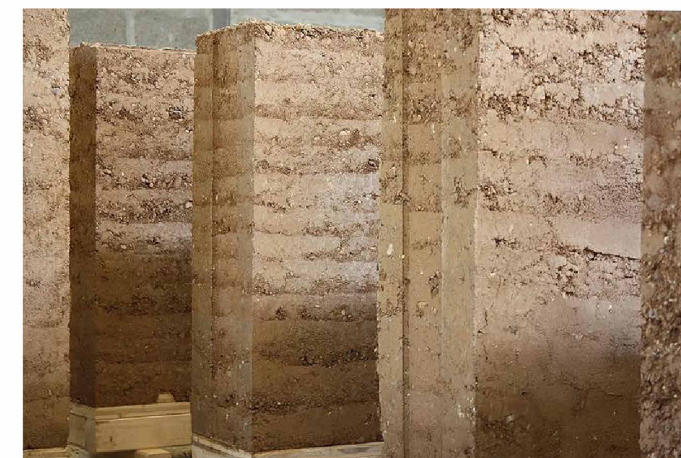




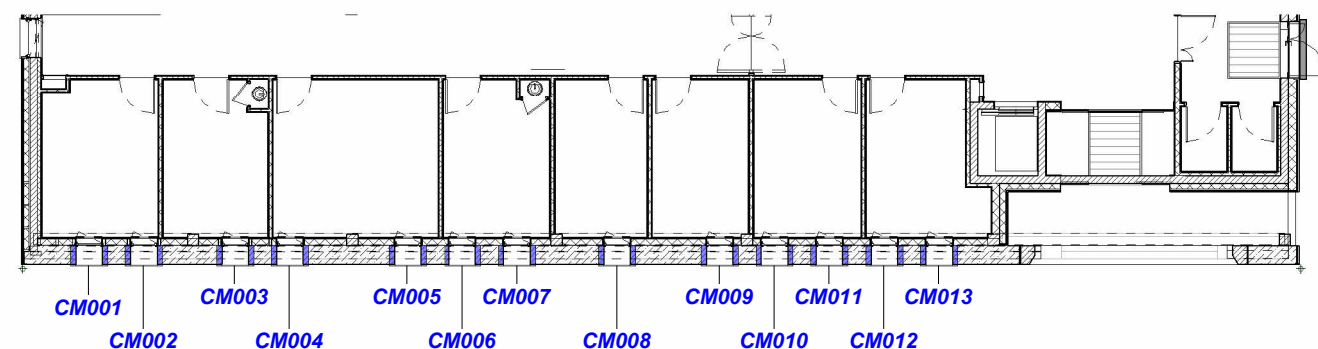
Assemblage simple ■



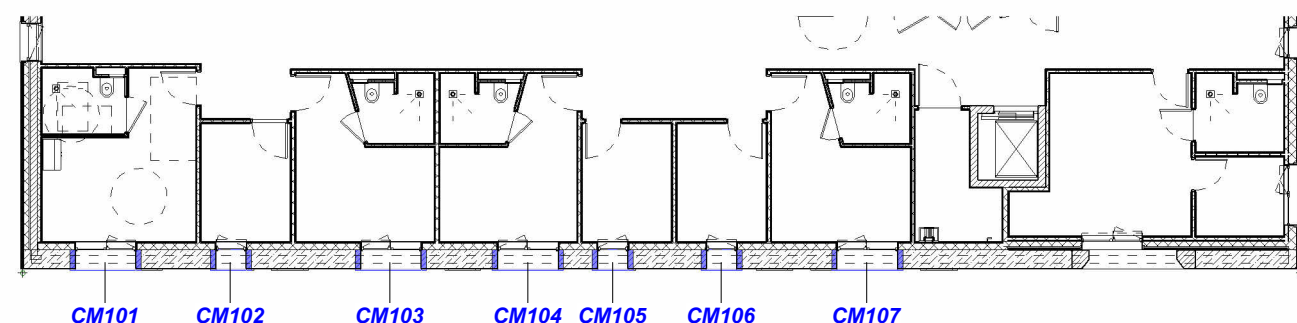
Assemblage à clef ■



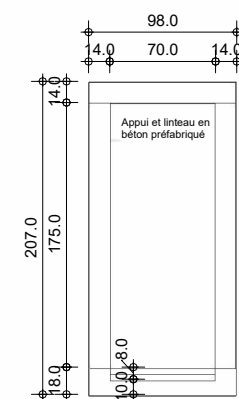
Elévation sud-est - principe de calepinage
1 : 100



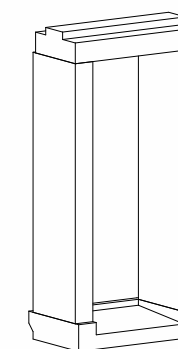
Plan RDC
1 : 200



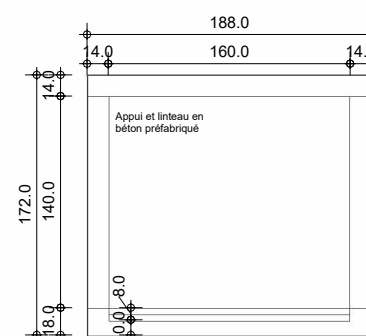
Plan R+1
1 : 200



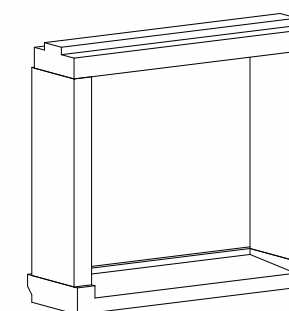
Elevation type 01 : CM001 à CM007
1 : 50



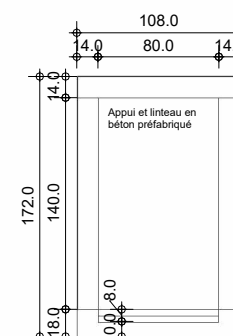
Axonométrie type 01 ; CM001 à CM007



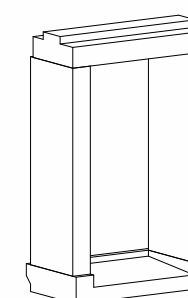
Elevation type 02 : CM101, CM103, CM104, CM107
1 : 50



Axonométrie type 02 : CM101, CM103, CM104, CM107



Elevation type 03 : CM102, CM105, CM106
1 : 50



Axonométrie type 03 : CM101, CM105, CM106