




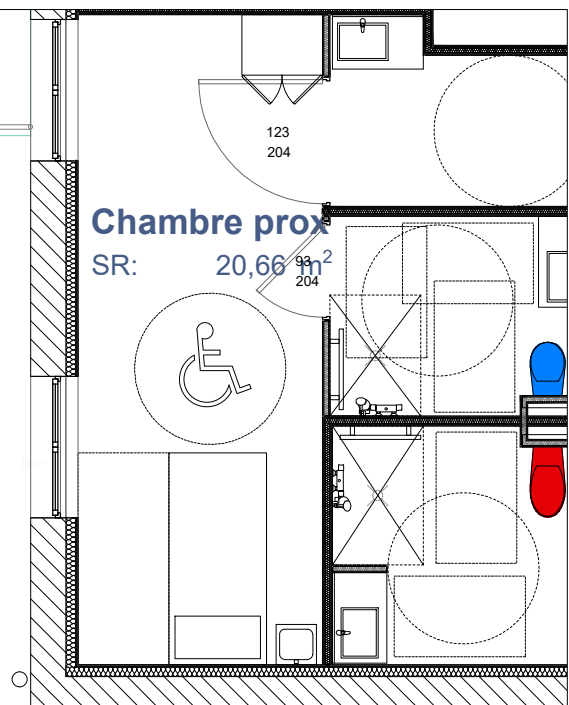
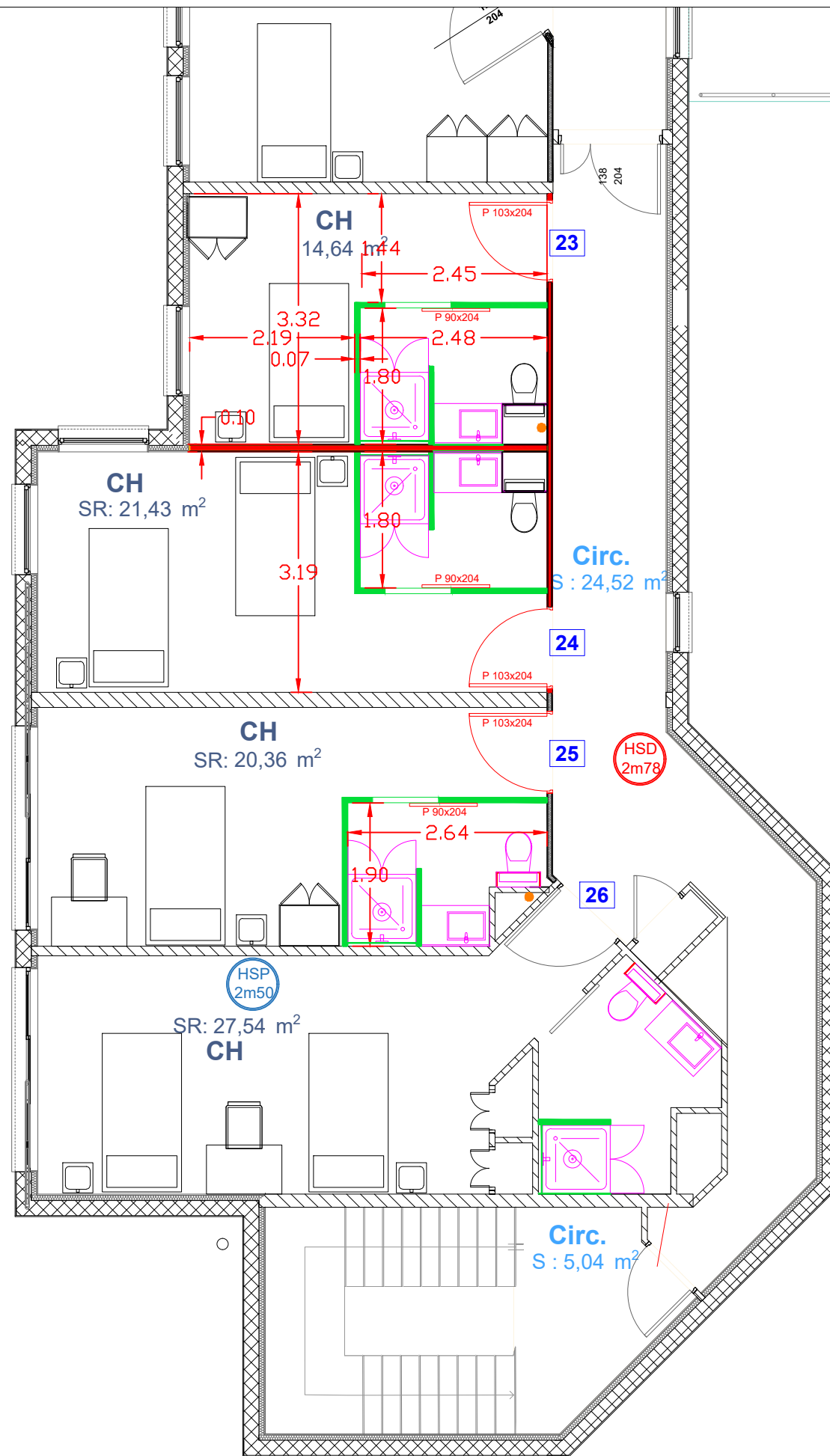


CLOISONS

-  Doublage placostil 120 : ossature rails + 1Ba13 + laine de verre - façade
-  Doublage placostil 1 peau + 1 rail
-  Cloison 98/62 - CF1H toute hauteur sous dalle
-  Cloison 72/48 hydrofuge pour locaux humides toute hauteur
-  Gaine technique sanitaire - 2 BA13 + plaque acrovyn

[illegible]