






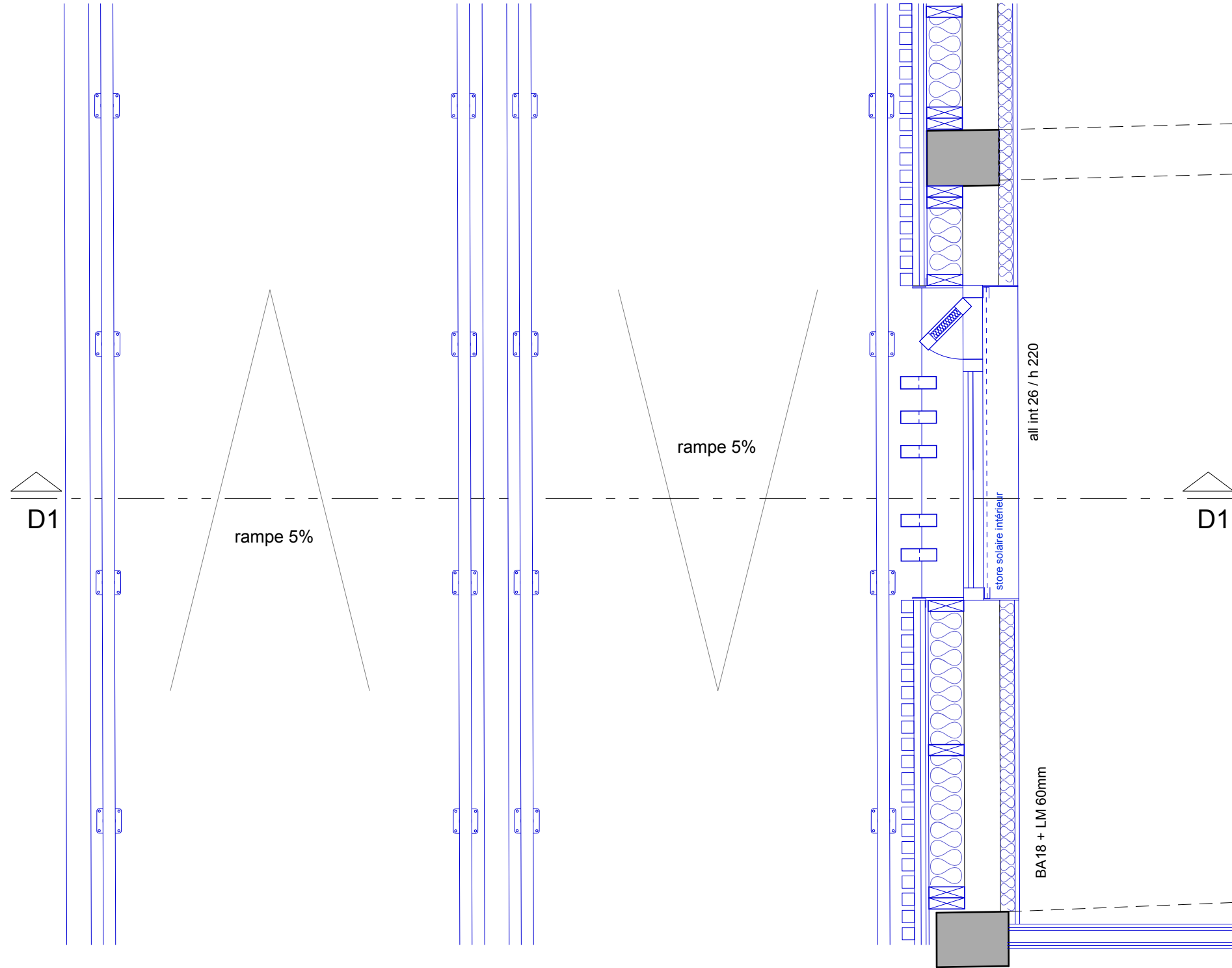
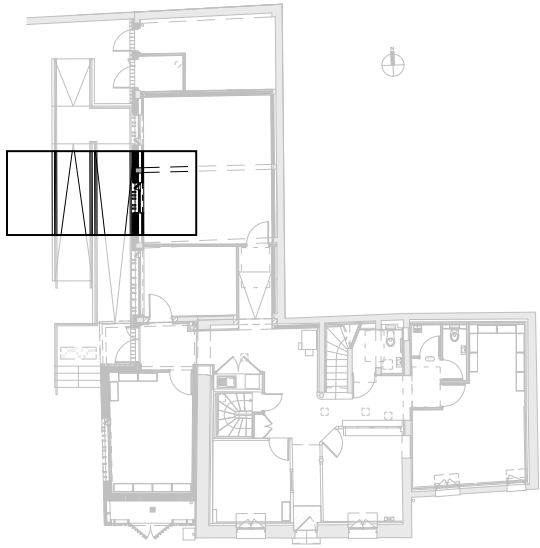


**Extension et restructuration de la direction interrégionale
de la protection judiciaire de jeunesse sud-ouest**
8, rue Poitevin
33000 Bordeaux

MAITRE D'OUVRAGE	Ministère de la Justice - Délégation Interrégionale du Secrétariat Général Sud-Ouest 13 rue Letellier - CS92100 - 33072 Bordeaux cedex tel : 05 40 45 24 00		
ARCHITECTE DPLG	AGENCE D'ARCHITECTURE F. LAFFITTE 141, av. Montaigne 33160 St Médard en Jalles Tel 05 56 70 04 40 mail: laffitte.architecte@orange.fr	 <small>1 41 AV MONTAIGNE 33160 ST MÉDARD EN JALLES 05 56 700 440 LAFFITTE.ARCHITECTE@ORANGE.FR</small>	
BUREAU D'ETUDES T.C.E	ACTIONM 1, rue du 503ème Régiment du Train 33127 Martignas sur Jalle Tel: 06 59 05 79 46 Mail: b.bufferand@actionm.fr		
BUREAU D'ETUDES ACOUSTIQUES	IDB ACOUSTIQUE 75 avenue Léon Blum 33600 Pessac Tel 05 56 07 55 55 mail: idb@idb-acoustique.com		
BUREAU DE CONTROLE	APAVE Avenue Gay Lussac BP3 33370 Artigues Prés Bordeaux Tel 05 56 77 38 46 mail: frederique.lauzeille@apave.com		
COORDONATEUR SPS	ELYFEC 32, allée de Boutaut 33070 Bordeaux Tel 06 78 11 28 11 mail: patrice.aprelon@elyfec.fr		

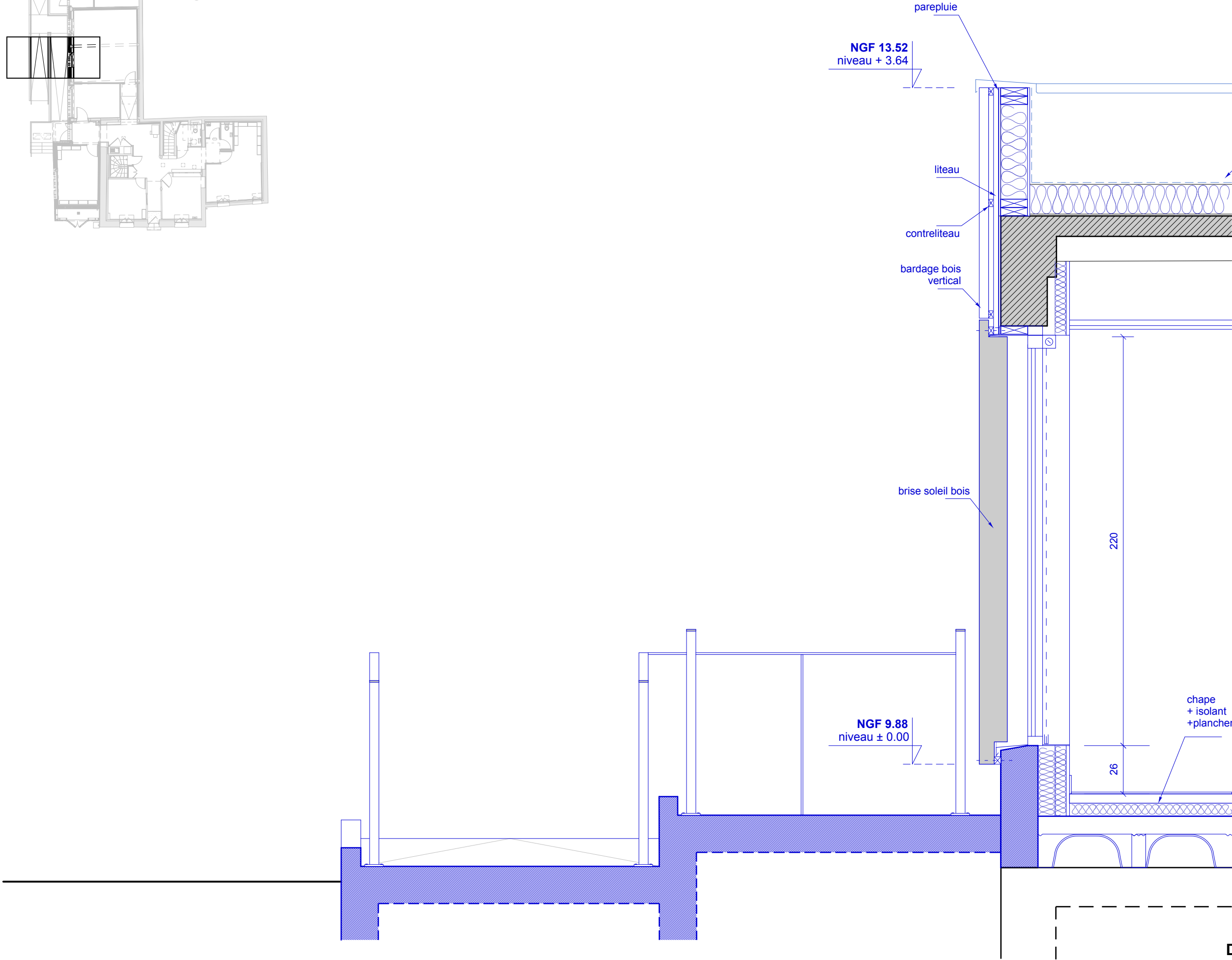
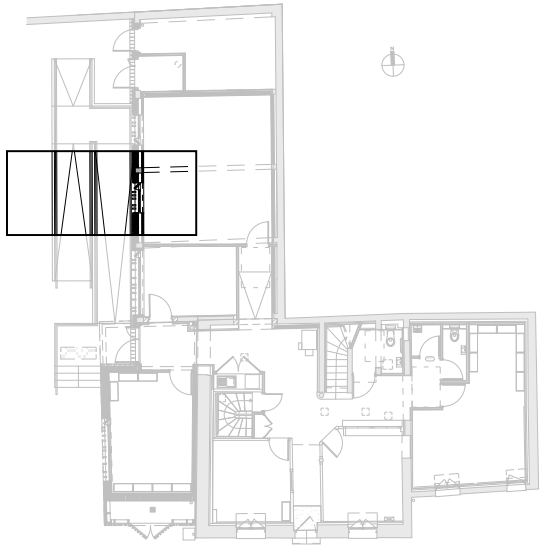
Date: oct. 2025	ech: 1/100	BÂTIMENT RH CARNET DE DÉTAILS
DCE	A 211	

PHASE	DATE	INDICE	MODIFICATIONS



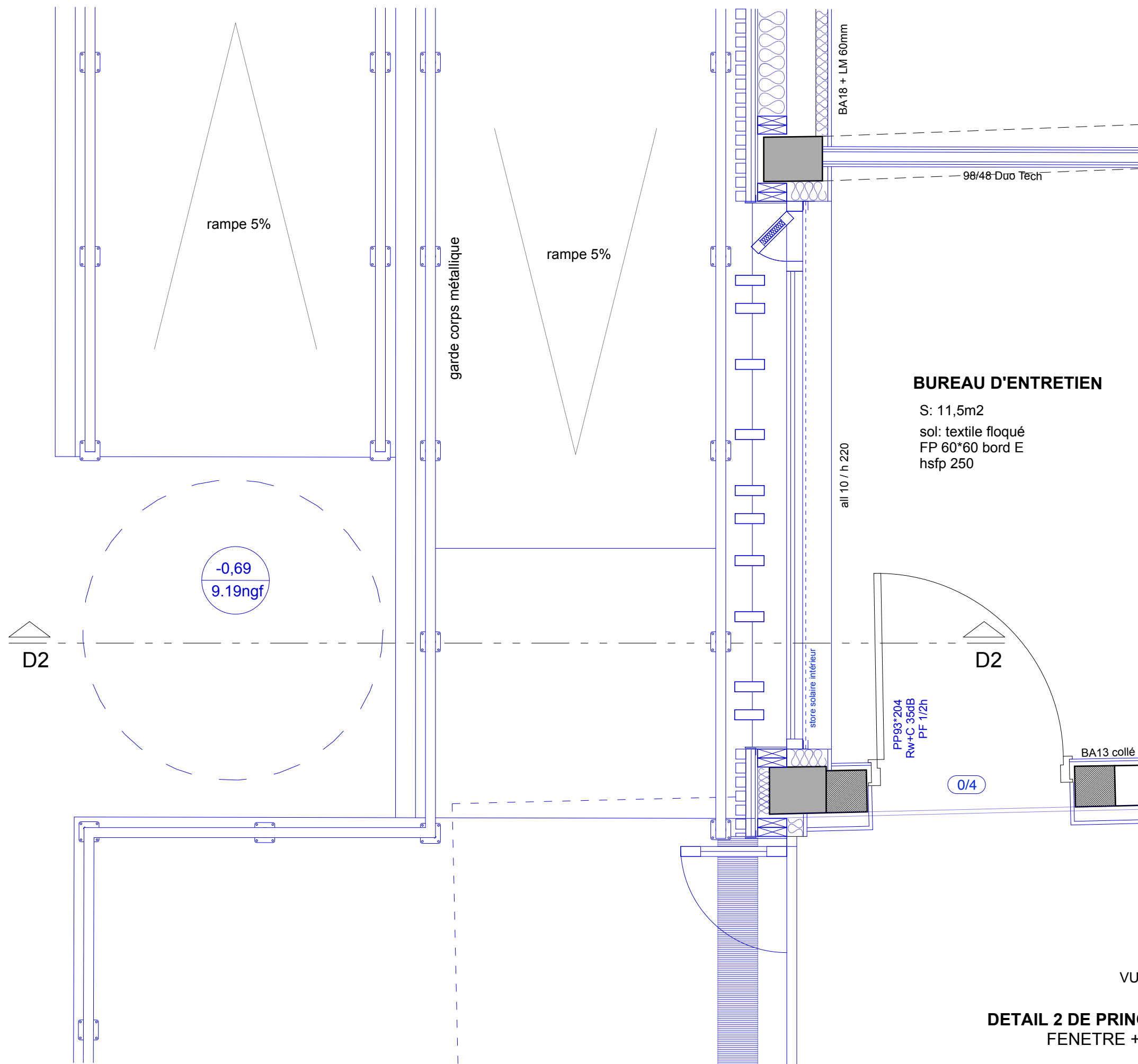
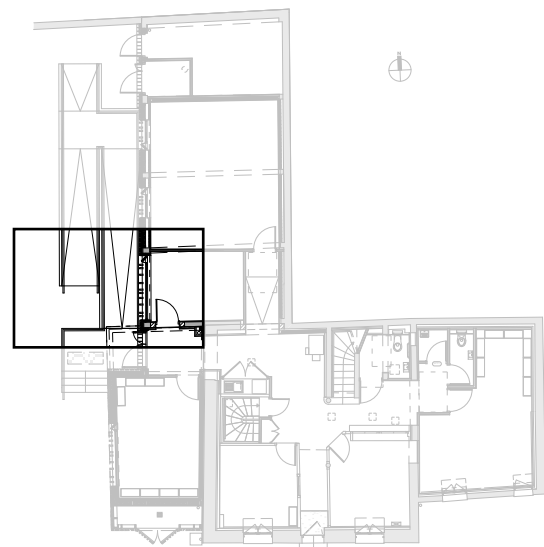
VUE EN PLAN - RDC

DETAIL 1 DE PRINCIPE - éch: 1/20
FENETRE + BRISE SOLEIL



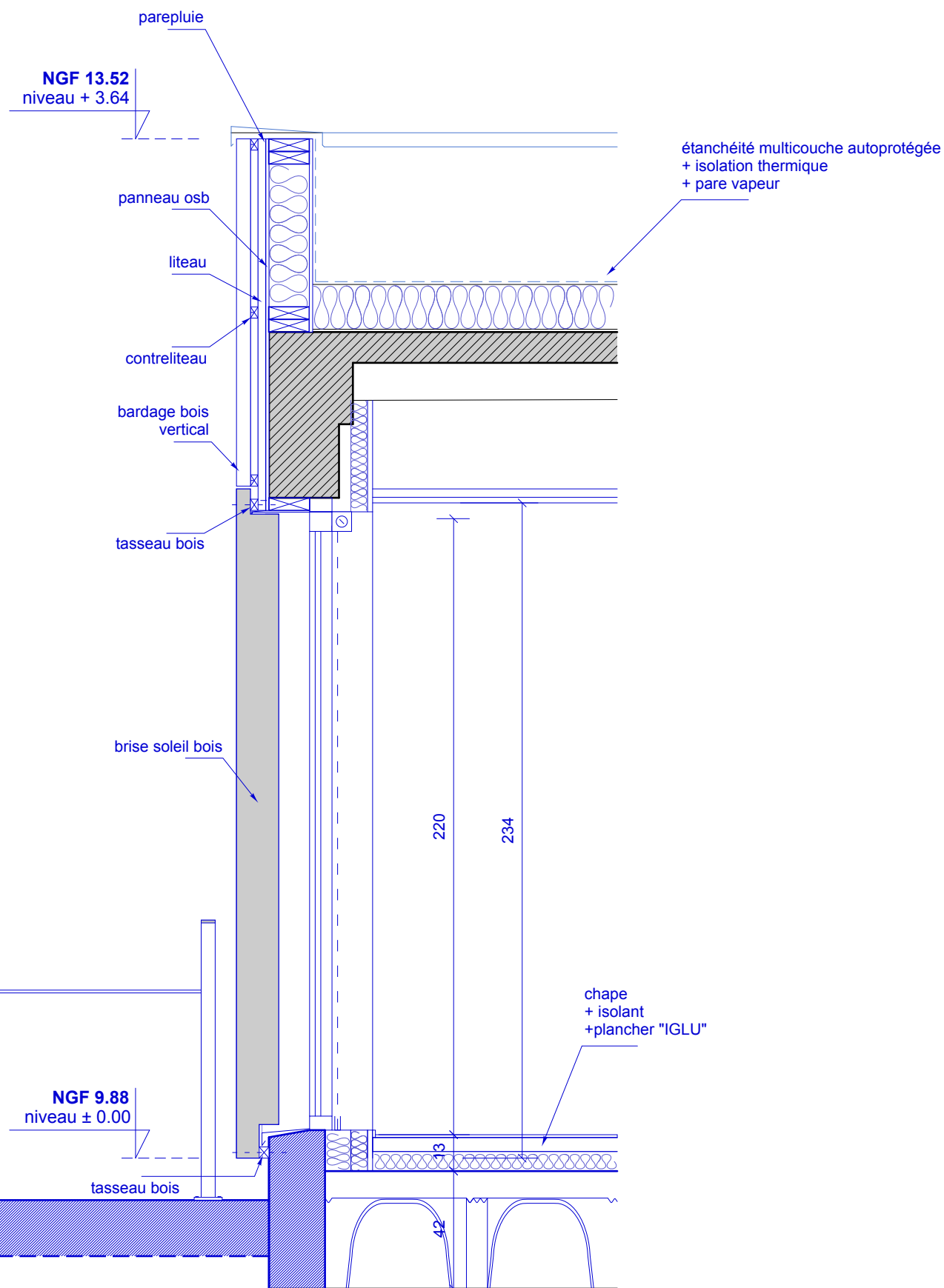
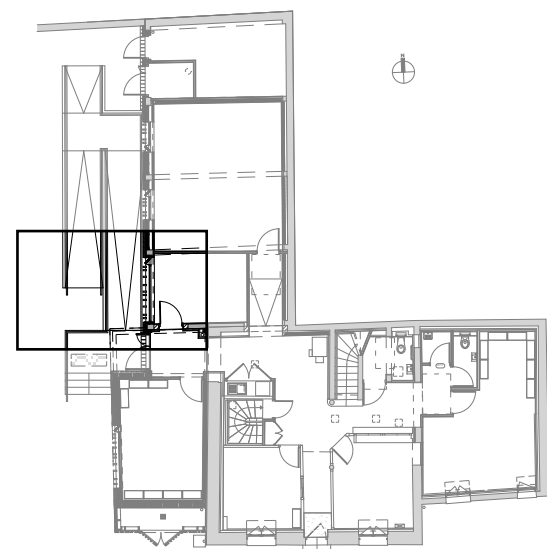
VUE EN COUPE

DETAIL 1 DE PRINCIPE - éch: 1/20
FENETRE + BRISE SOLEIL



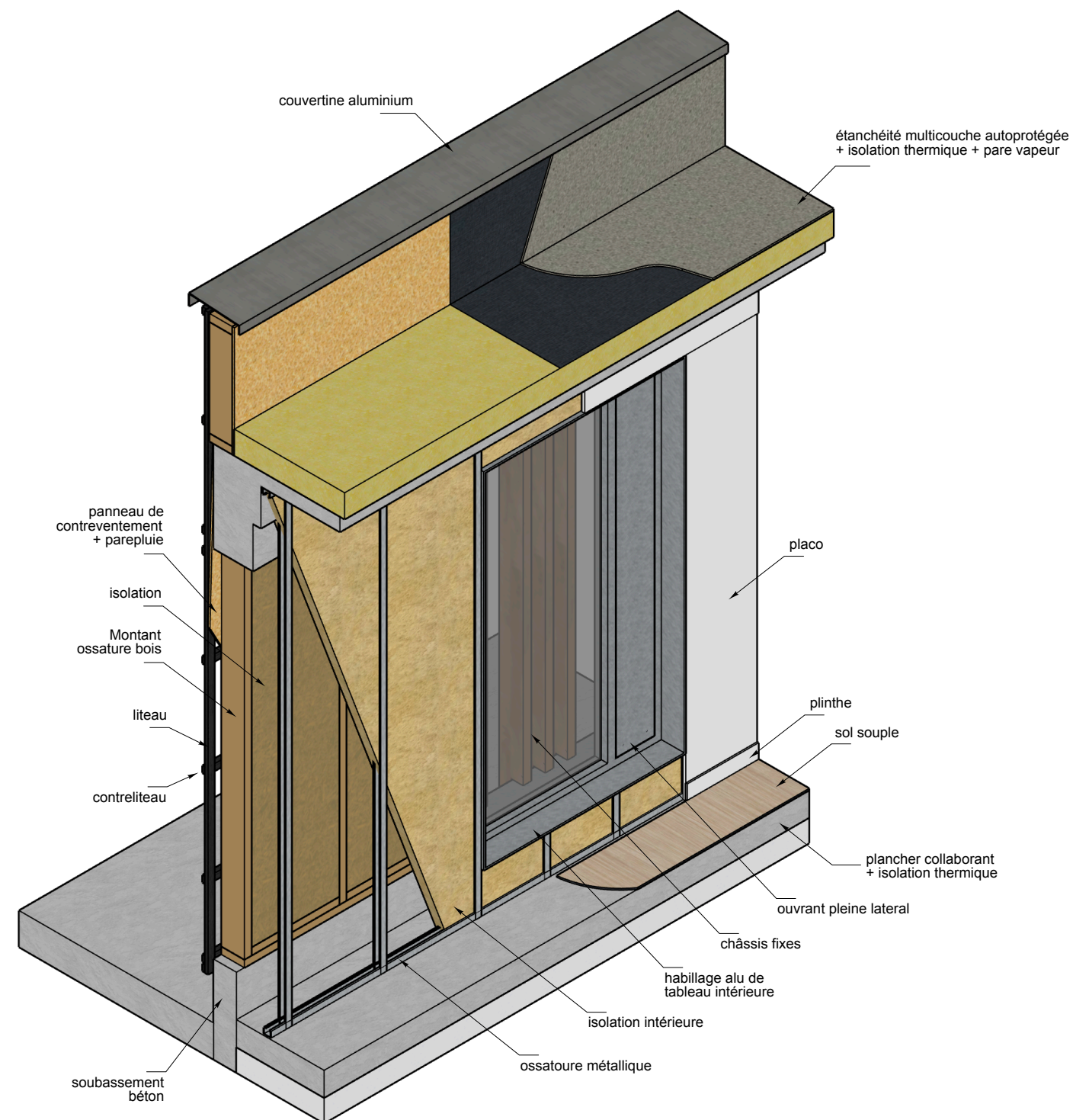
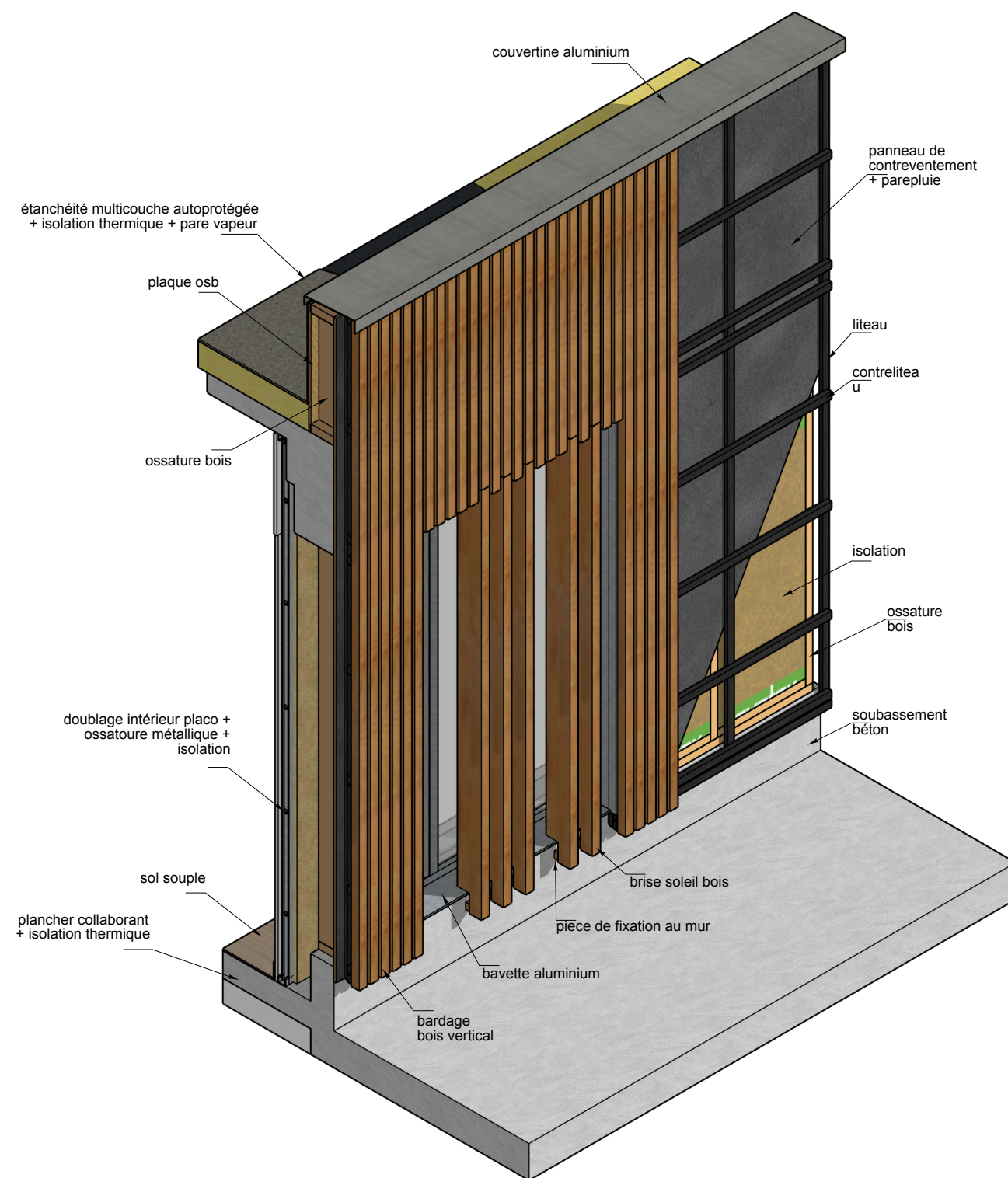
VUE EN PLAN - RDC

DETAIL 2 DE PRINCIPLE - éch: 1/20
FENETRE + BRISE SOLEIL



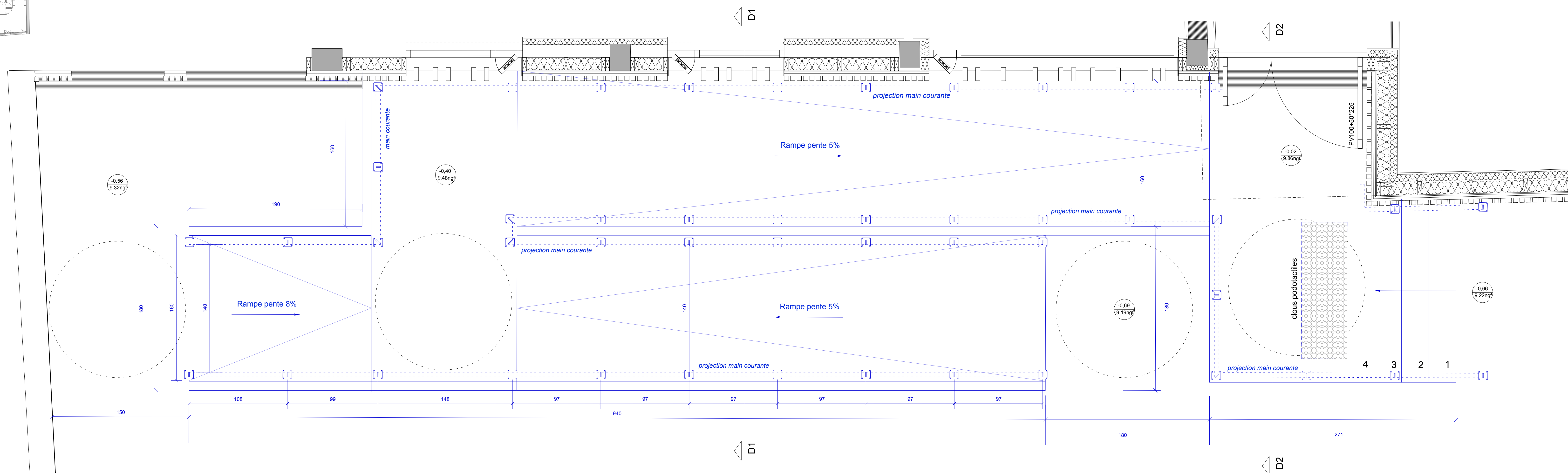
VUE EN COUPE

DETAIL 2 DE PRINCIPLE - éch: 1/20
FENETRE + BRISE SOLEIL



VUE EN AXONOMETRIE

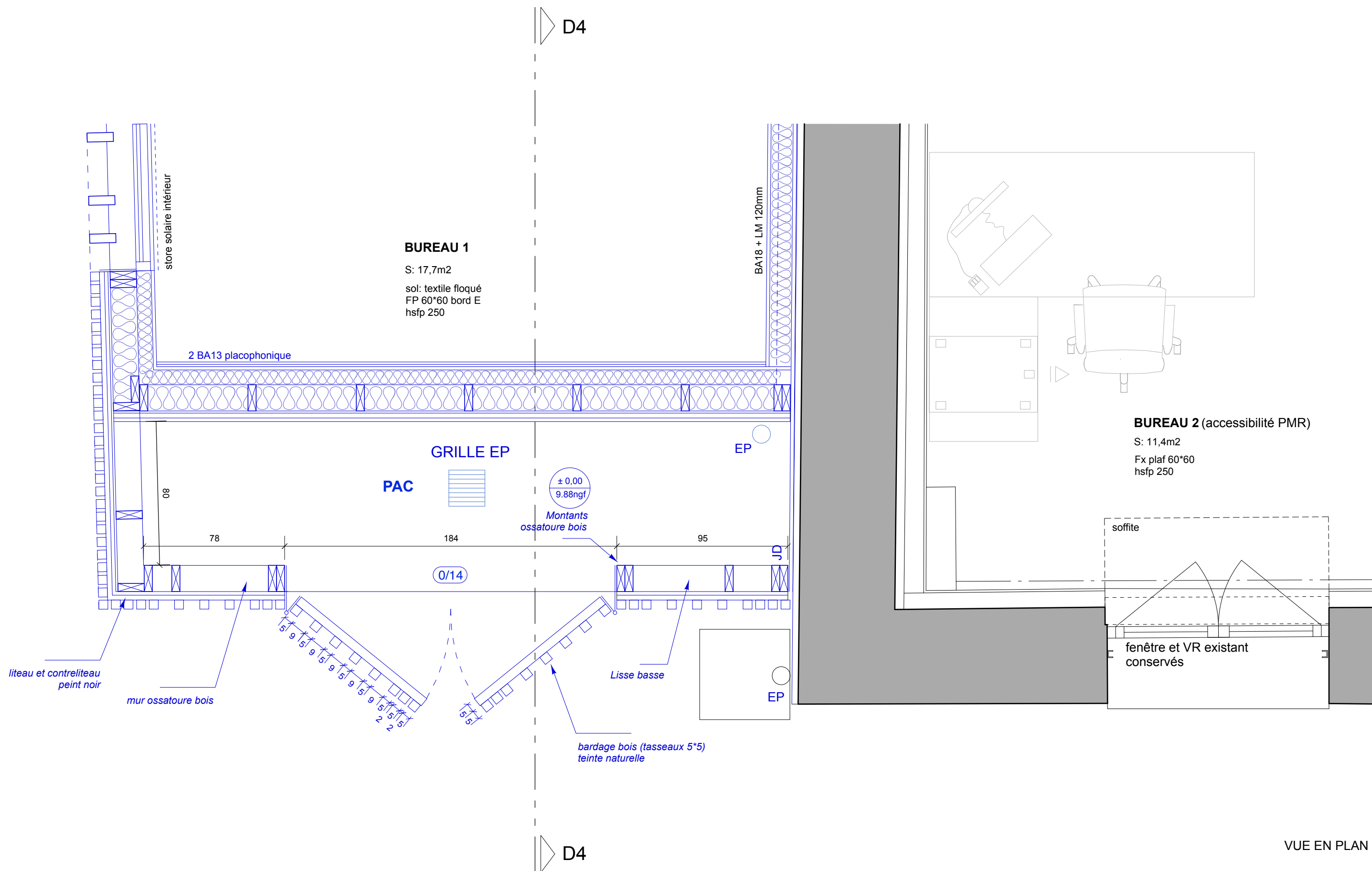
DETAIL 1 et 2 DE PRINCIPE
FENETRE + BRISE SOLEIL



DETAIL 3 DE PRINCIPE - éch: 1/20
MAINS COURANTES

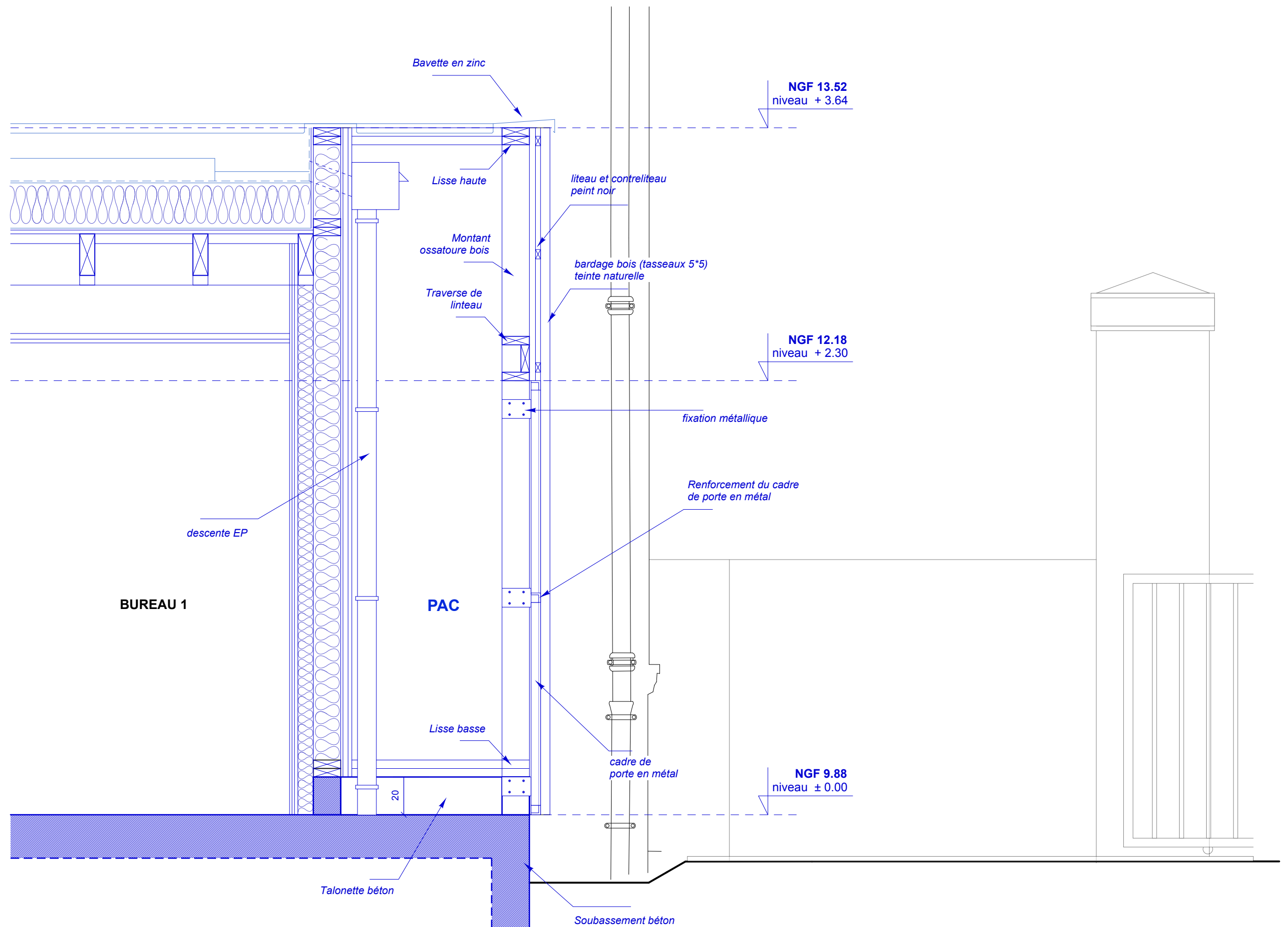


DETAIL 3 DE PRINCIPE - éch: 1/20
MAINS COURANTES



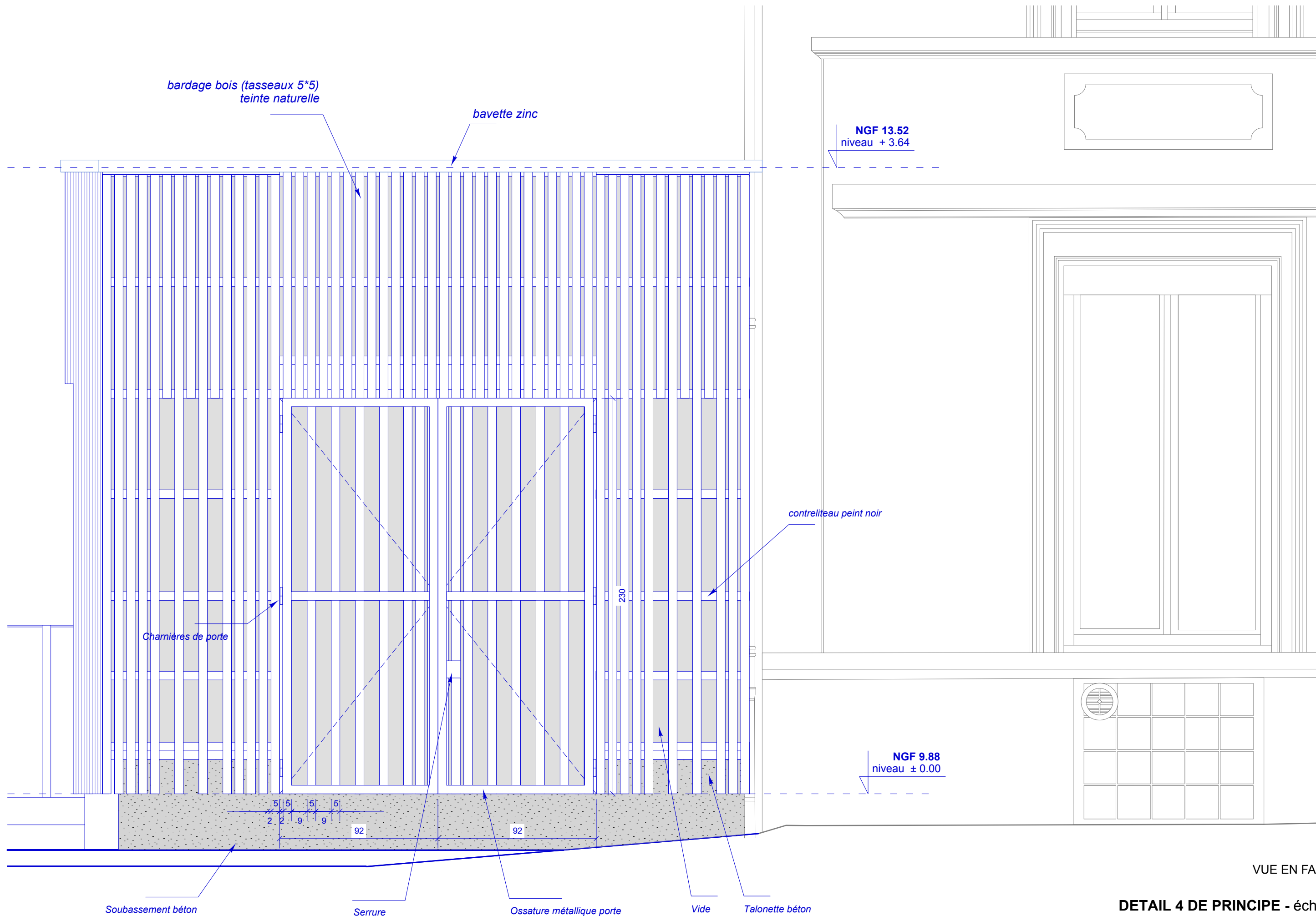
VUE EN PLAN - RDC

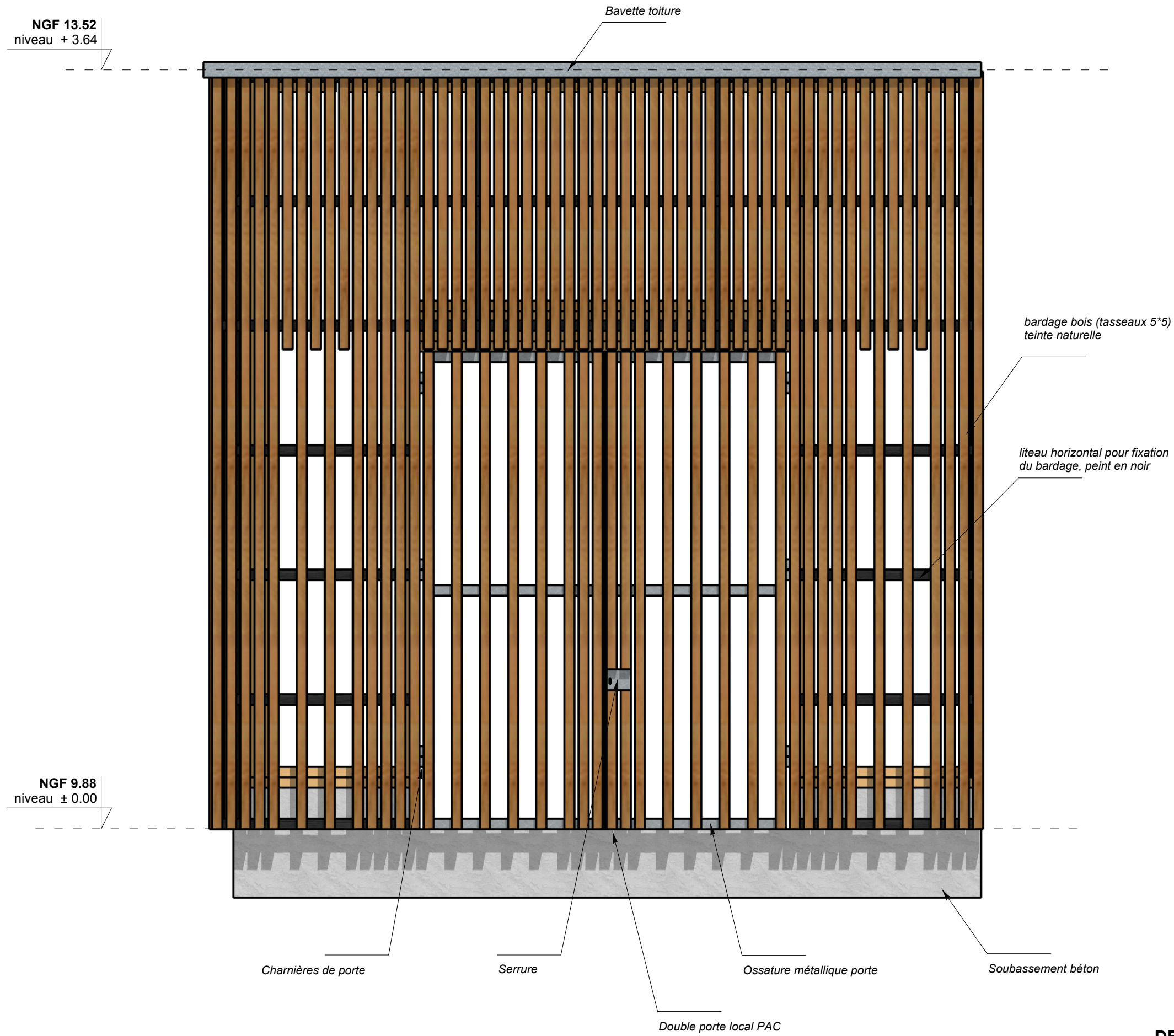
DETAIL 4 DE PRINCIPE - éch: 1/20
PORTE LOCAL PAC



VUE EN COUPE

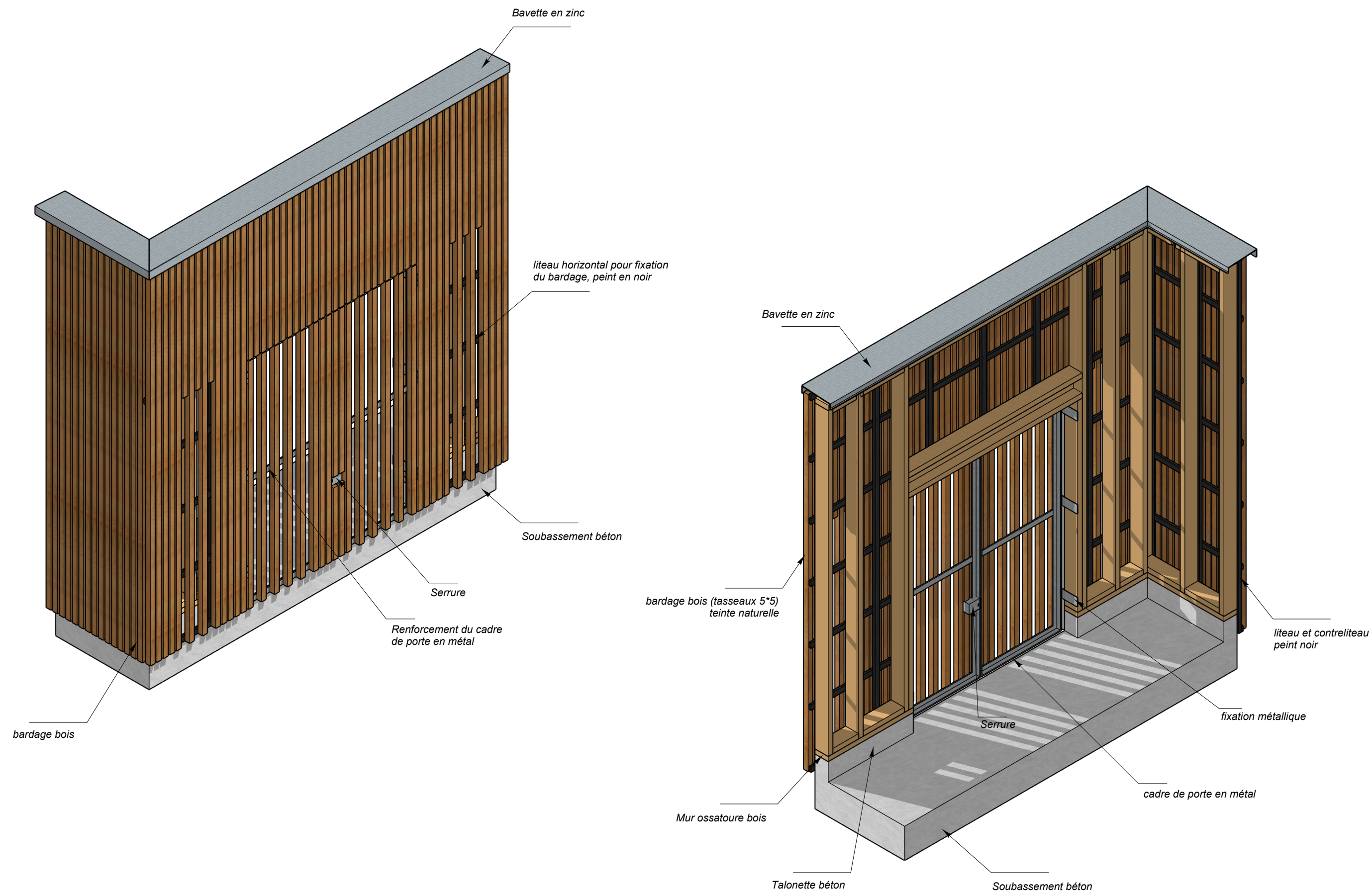
DETAIL 4 DE PRINCIPLE - éch: 1/20
LOCAL PAC





VUE EN FACADE

DETAIL 4 DE PRINCIPE - éch: 1/20
PORTE LOCAL PAC



VUE EN AXONOMETRIE

DETAIL 4 DE PRINCIPE - Sans échelle
PORTE LOCAL PAC

