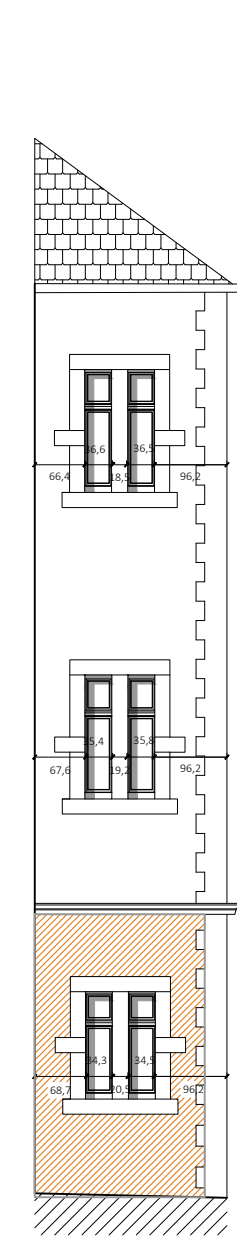
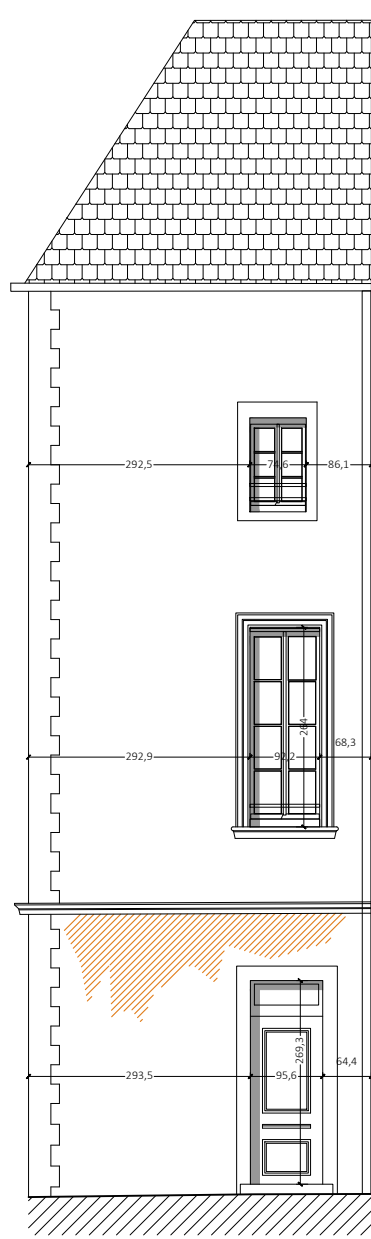


FACADE Q



FACADE R



FACADE S



FACADE T

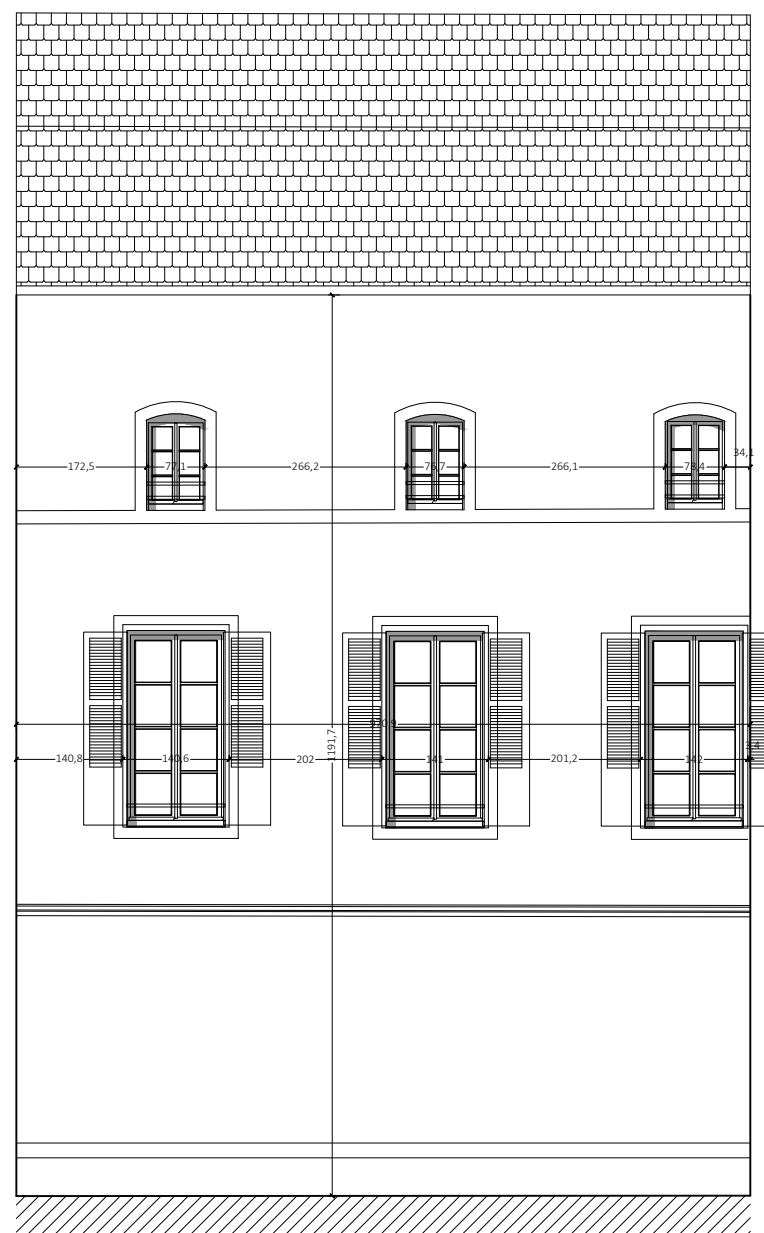


FACADE U

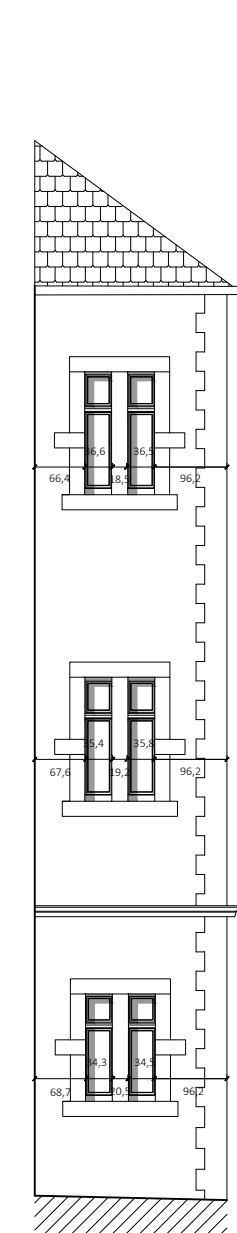
24

25

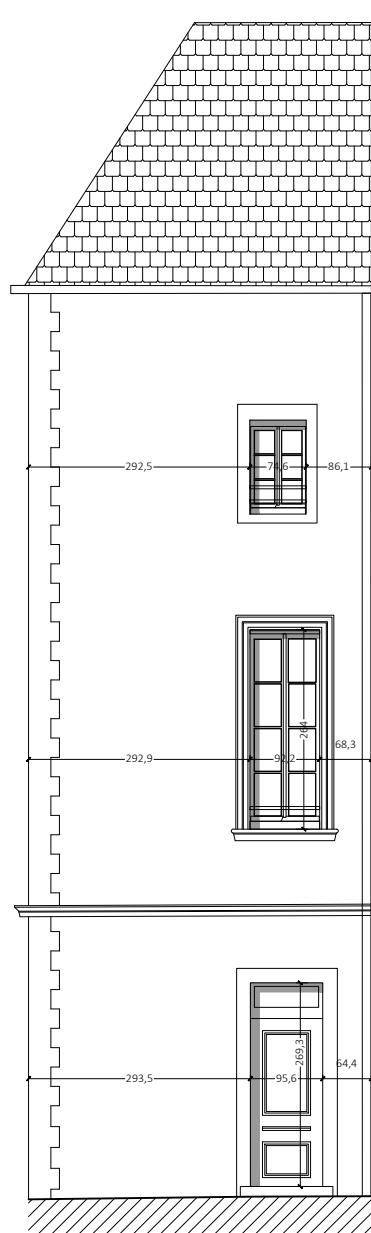
EXISTANT



FACADE Q



FACADE R



FACADE S



FACADE T

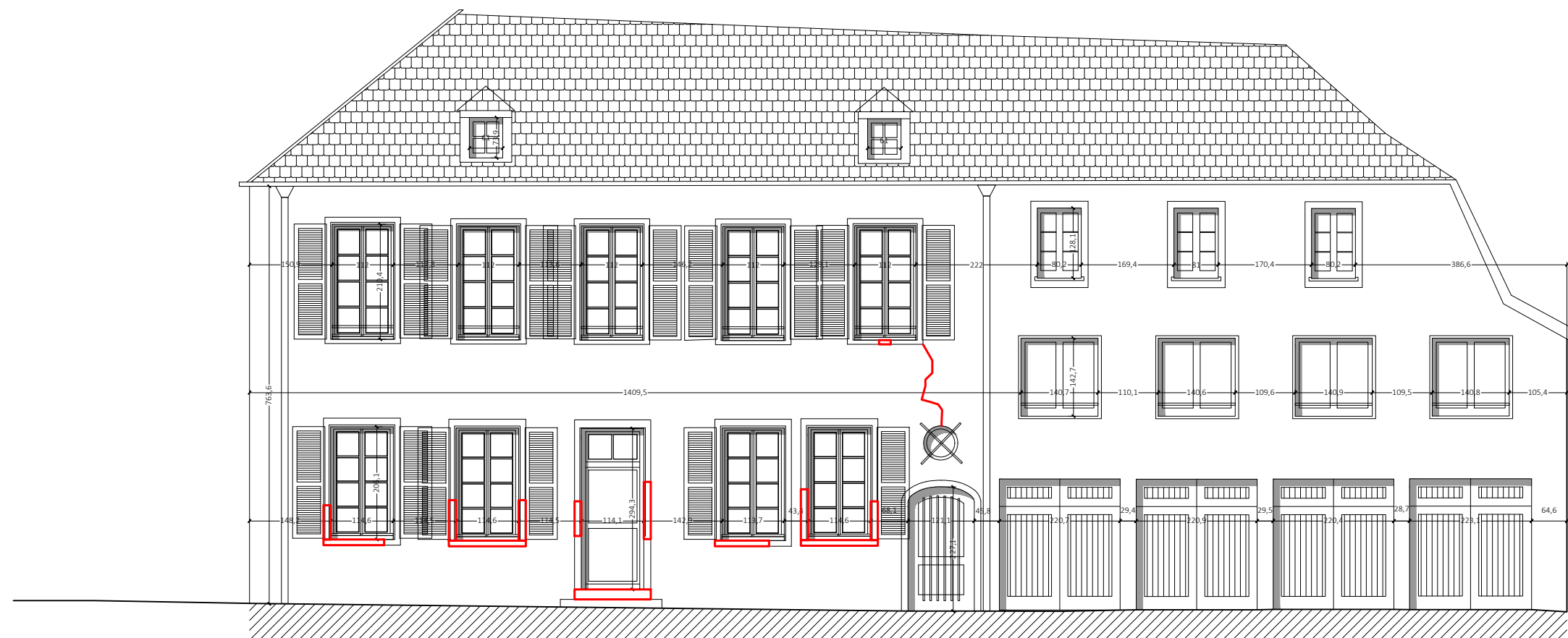


FACADE U

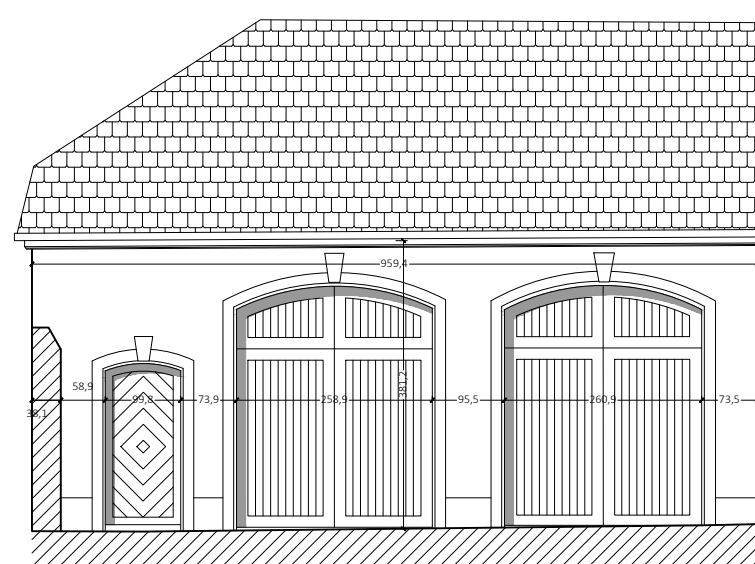
24

25

PROJETE

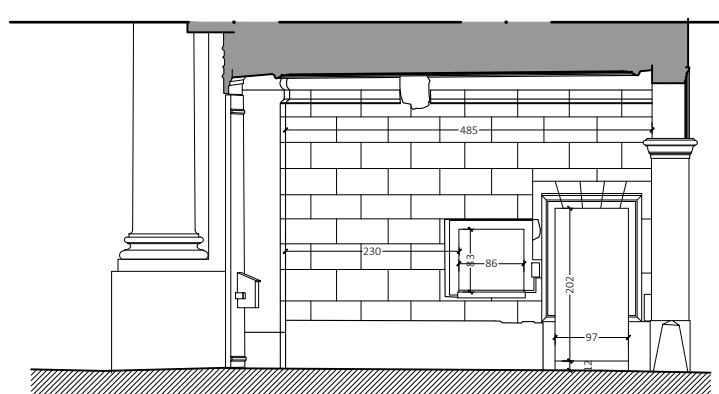


FACADE W

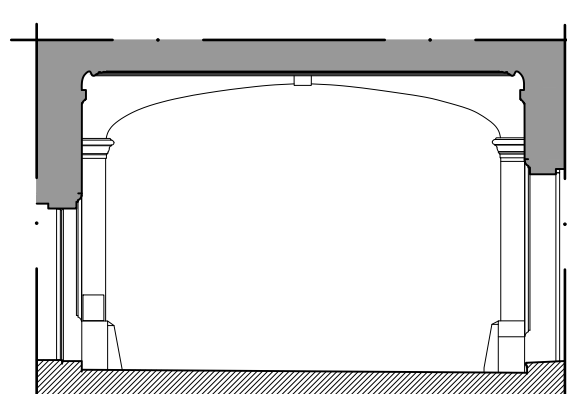


FACADE X

PORCHE



FACADE YO

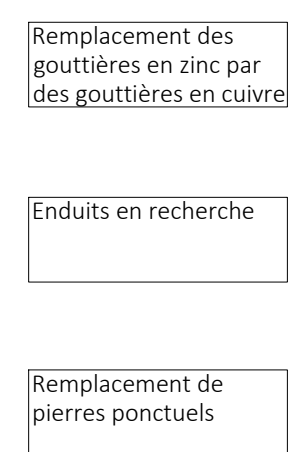


FACADE YS

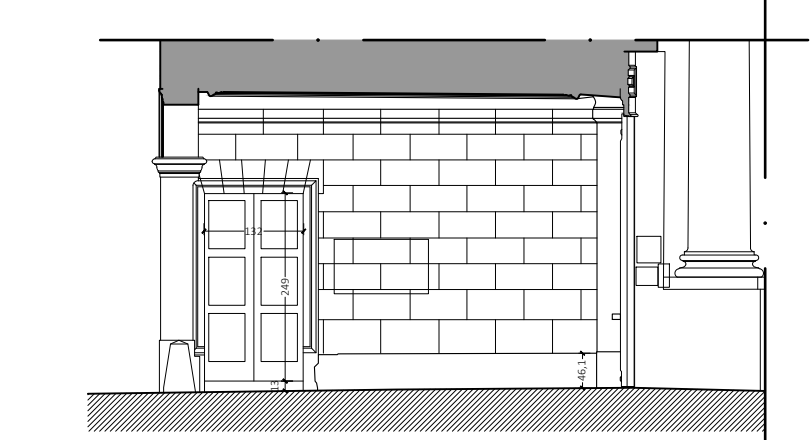
EXISTANT



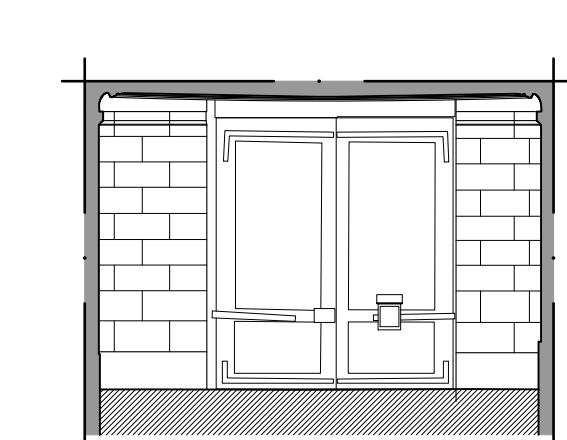
FACADE W



FACADE X

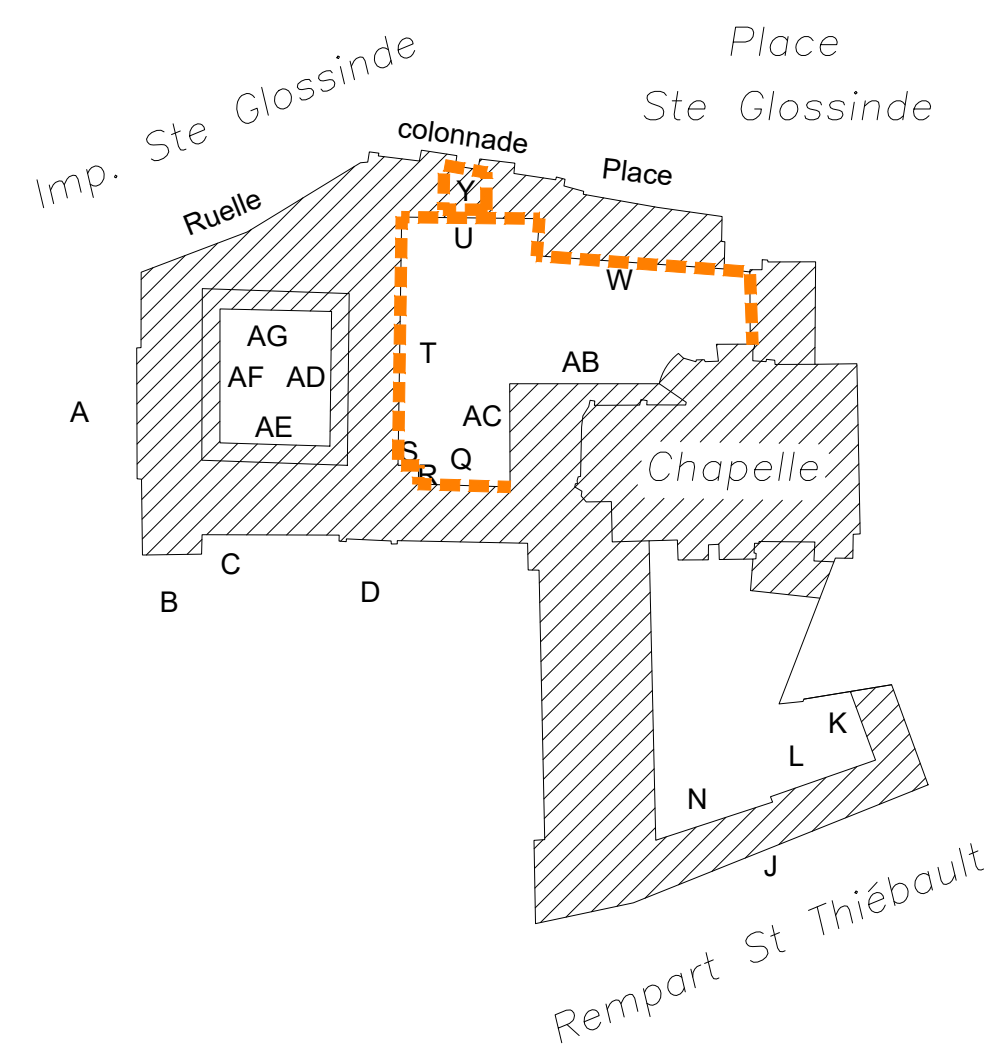


FACADE YE



FACADE YN

PROJETE



RENOVATION DES FACADES DE LA COUR D'HONNEUR DE L'ÉVÊCHÉ DE METZ  
15 Place Sainte-Glossinde, 57000 Metz

INTITULE DU PLAN : Façades			
DATE 1er DIFFUSION : 3 octobre 2025	PHASE : PRO	DESSINÉ PAR : Atelier OZOL - DE MICHELI	NUMERO : NONT/DU/FICHIER
ECHELLE : 1/100e (A0)		pro_eve_facades.dwg	

MATRE D'OUVRAGE : PREFECTURE DE LA MOSELLE 9, Place de la Préfecture 57034 Metz	MATRE D'OUVRURE MANDATAIRE : ODM	ATELIER OZOL-DE MICHELI 23, Avenue de la Ford Noire 57000 STRASBOURG TEL : 03 88 52 12 88 contact@atelierodm.archi
---	----------------------------------	--