



SOCNA

21 rue Beaumarchais
21 000 DIJON

0380519423
contact@socna.com

PROJET



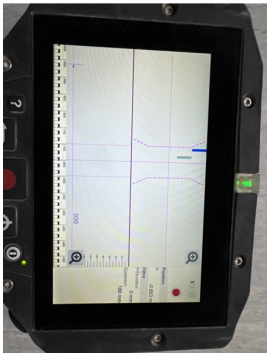
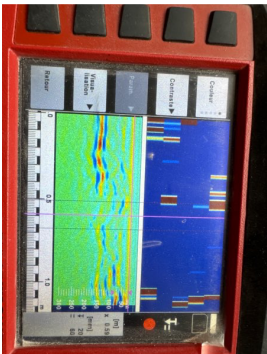
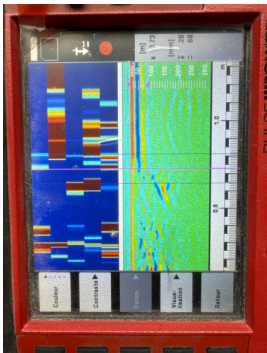
Campus Maret : dallages
La soderec
3 rue du Docteur Maret
21000 Dijon
Diagnostic technique des structures

REMARQUES GÉNÉRALES

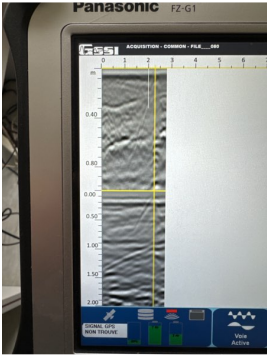
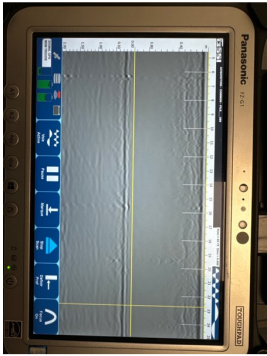
À garder pour mémoire depuis le 18/07/2024, créée le 02/07/2024

1.1

C1: sondage au pachometre PS300 et radar PS1000



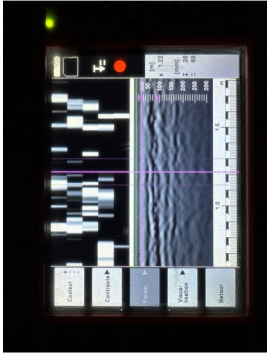
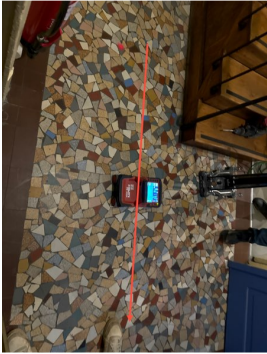
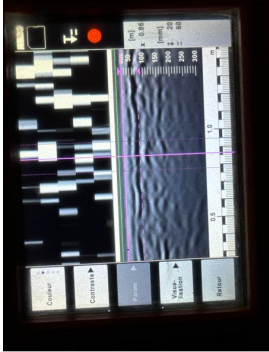
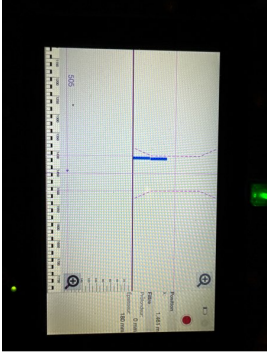
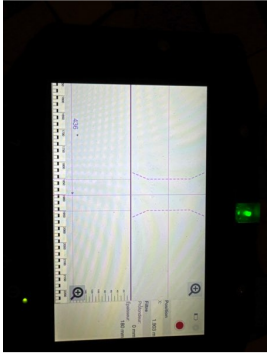
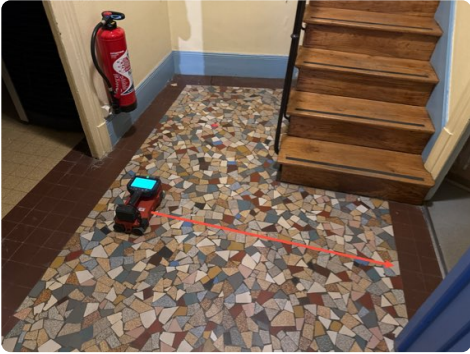
C1: sondage georadar



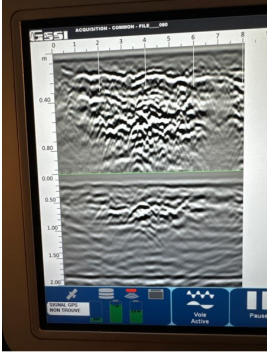
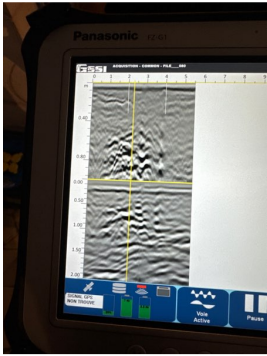
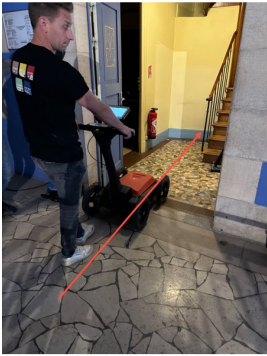
C1: carottage



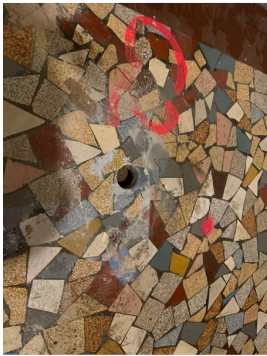
C2: sondage au pachometre PS300 et radar PS1000



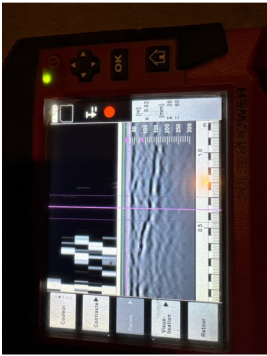
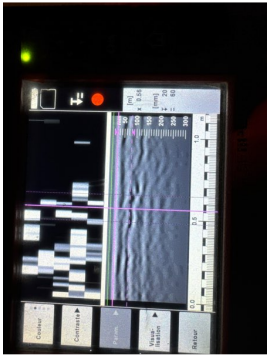
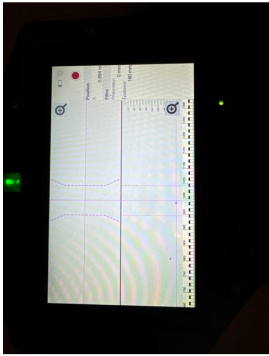
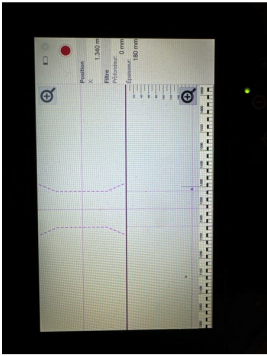
C2: sondage georadar



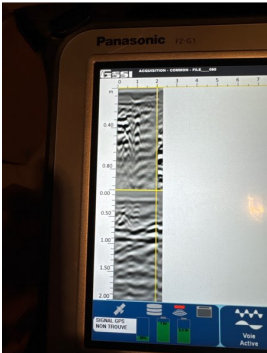
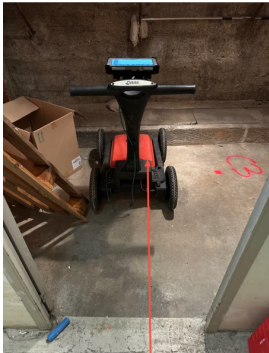
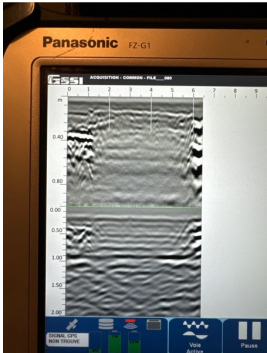
C2: carottage



C3: sondage au pachometre PS300 et radar PS1000



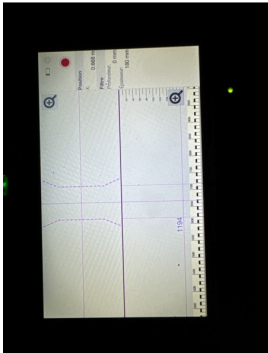
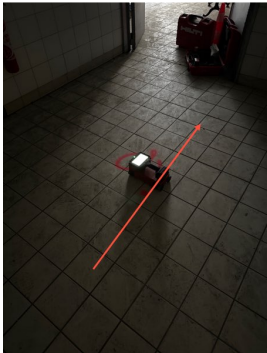
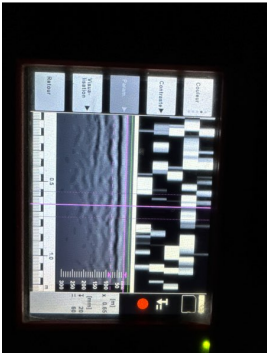
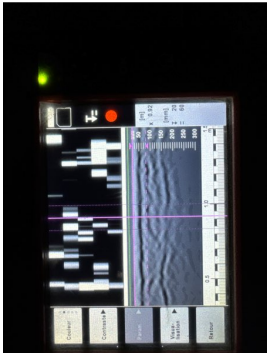
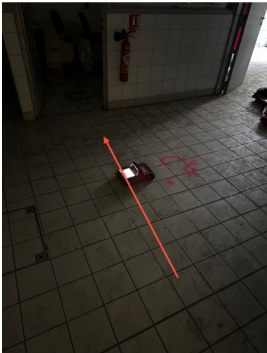
C3: sondage georadar



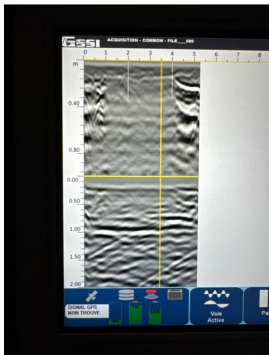
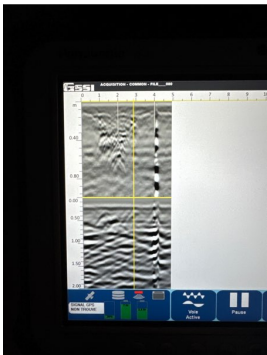
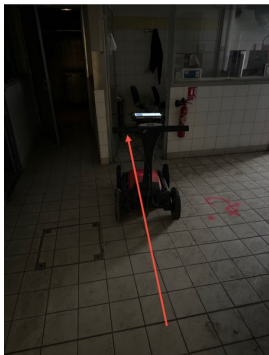
C3: carottage



C4: sondage au pachometre PS300 et radar PS1000



C4: sondage georadar

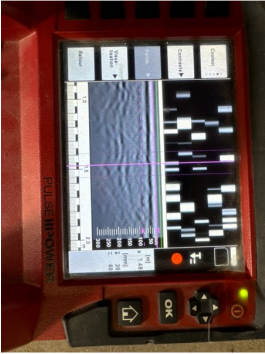
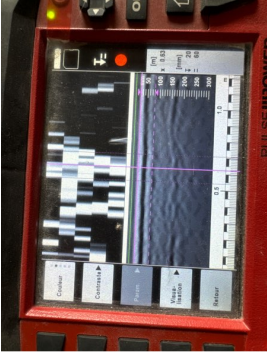
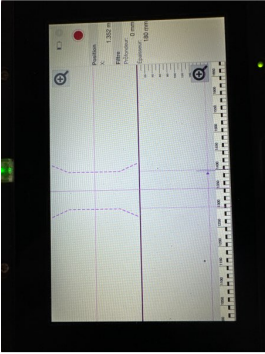


Clôturée le 18/07/2024, créée le 02/07/2024

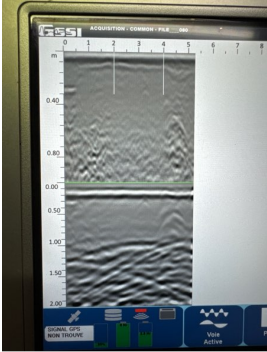
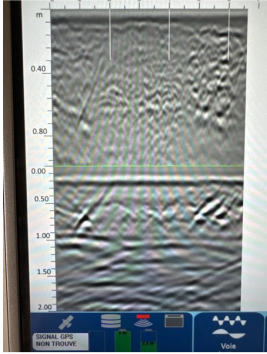
C4: carottage



C5: sondage au pachometre PS300 et radar PS1000



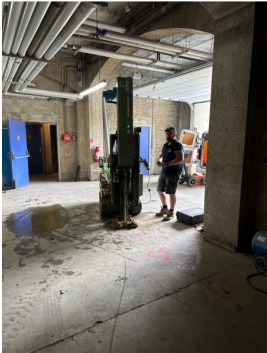
C5: sondage georadar



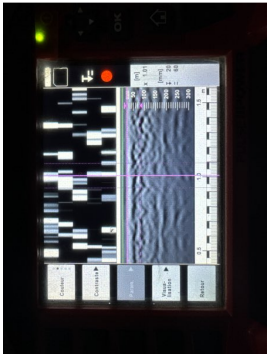
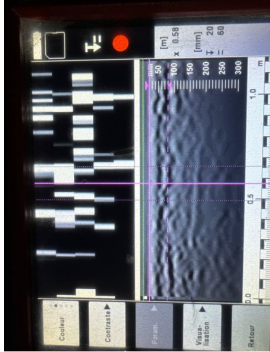
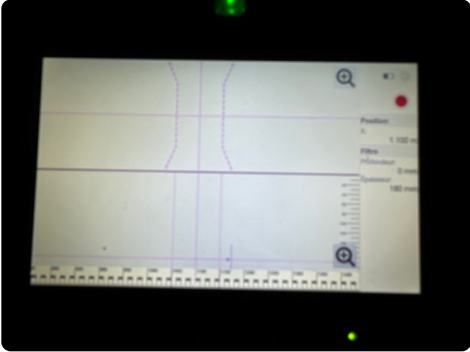
C5: carottage



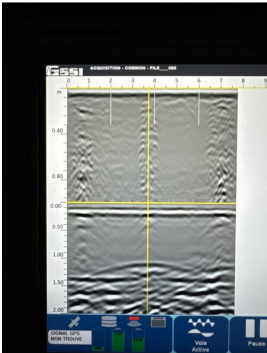
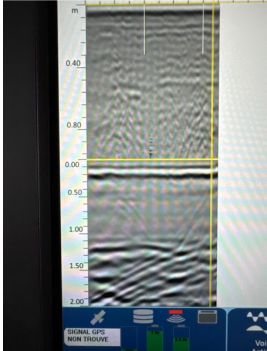
C5: sondage geotechnique



C6: sondage au pachometre PS300 et radar PS1000



C6: sondage georadar



C6: carottage

