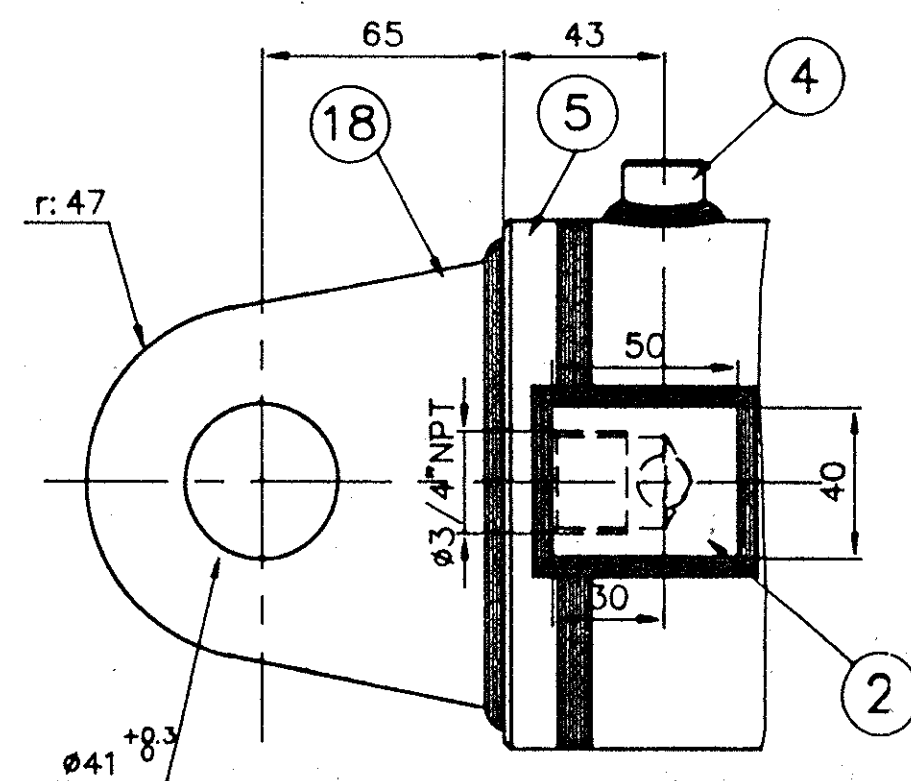
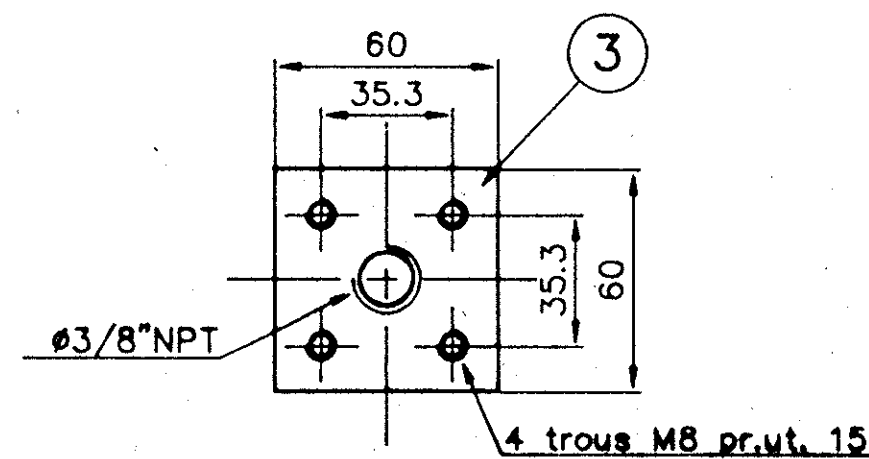


Vue 'C'

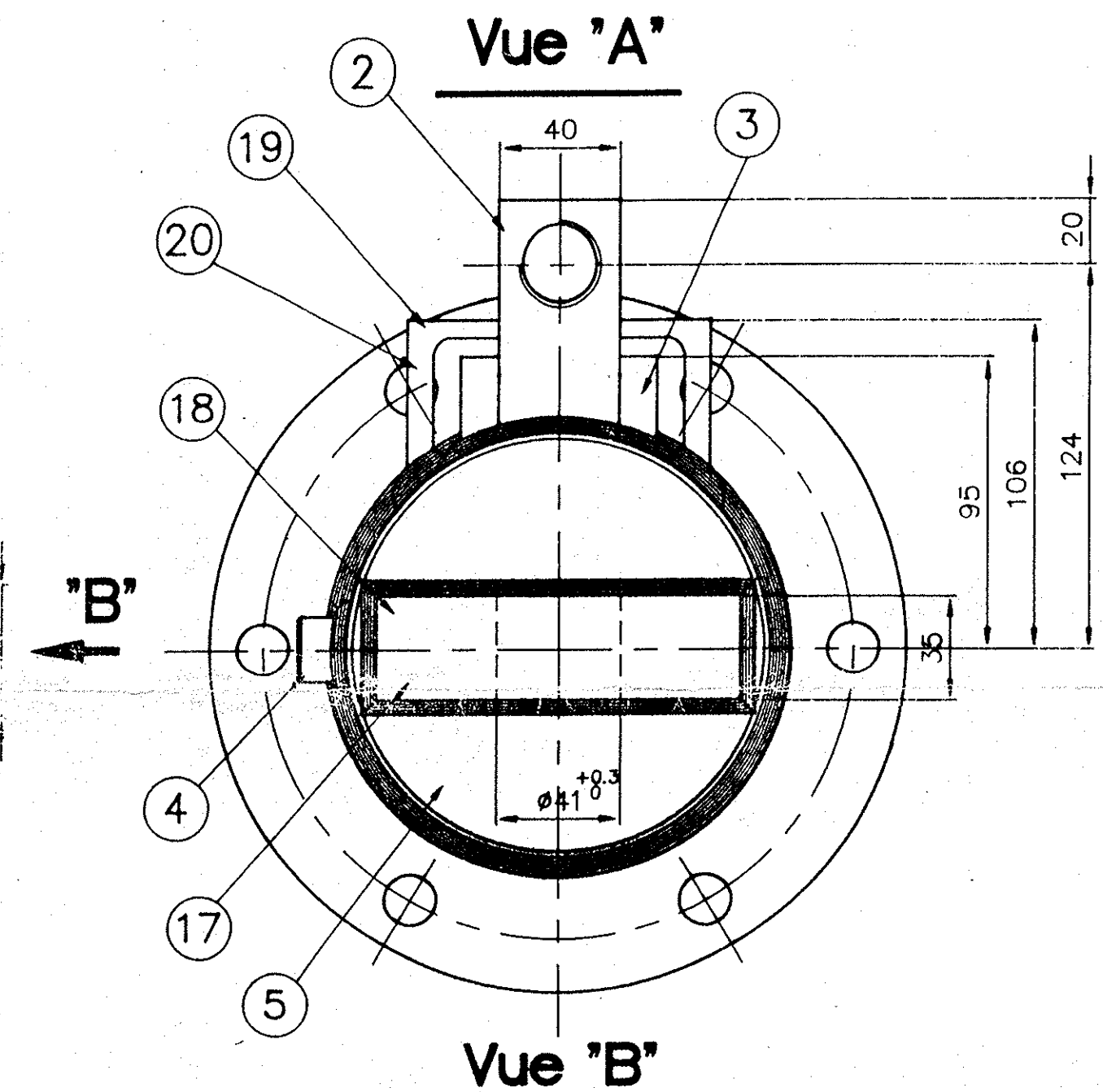


Vue 'D'

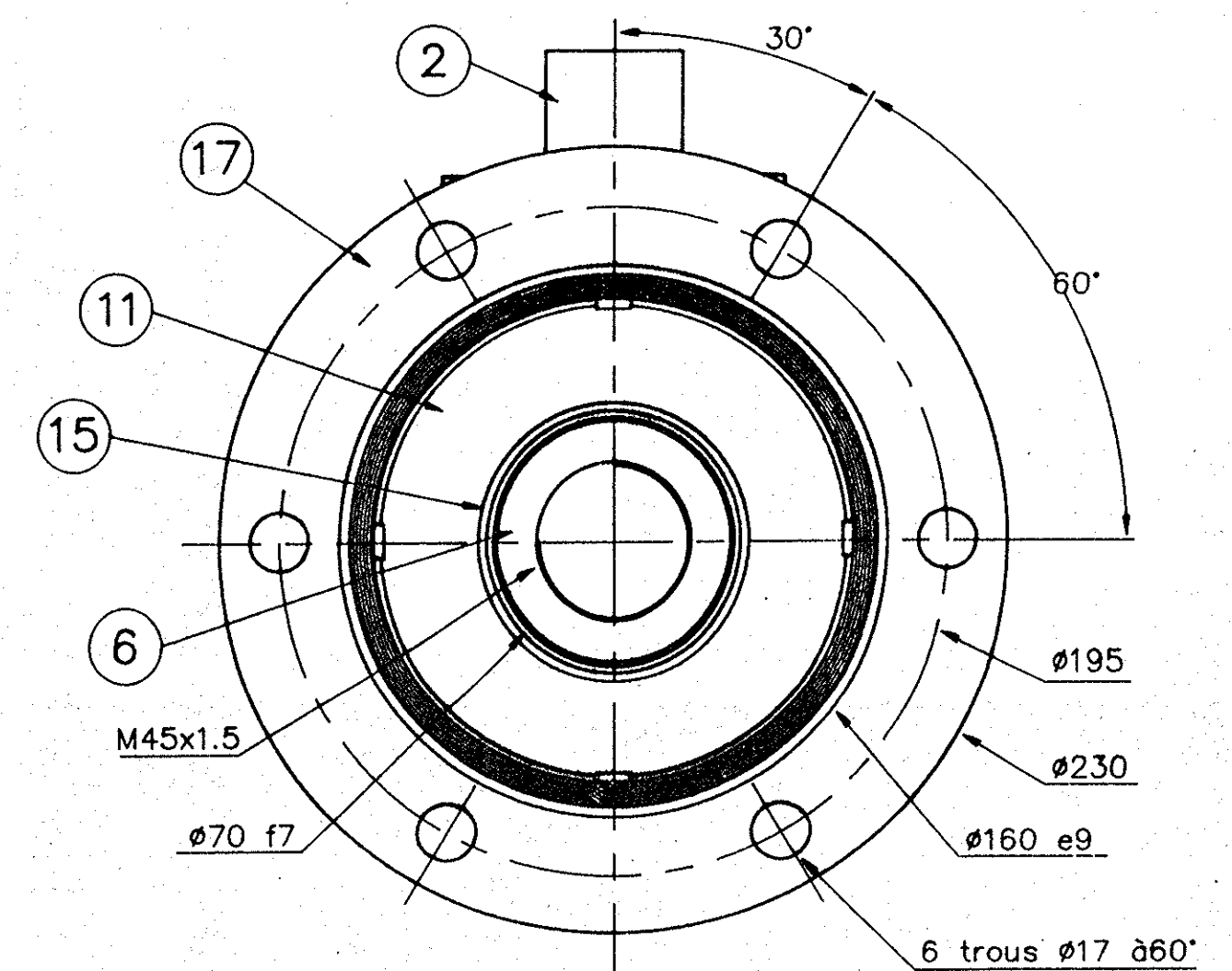




PRESSIION DE SERVICE MAXI: 160bar
PRESSIION D'EPREUVE: 240bar

REP. Nb.	DESIGNATIONS	REFERENCE	OBSERVATIONS	CODE
19	2 Profil UAP	100x50 long.: 40		
18	1 Chape à oeil	2110.1048.2		
17	1 Bride	2110.1048.7		
16	1 Joint statique	OR.127x3.5	Merkel	
15	1 Racleur metalique UZ 23 A4	2110.1048.6		
14	1 Joint racleur de tige	P6.Ø70	Merkel	
13	1 Joint statique de guide + BAE	R n° 53	Merkel	
12	2 Joint étanchéité de tige	T20.70x85x12.5iso	Merkel	
11	1 Guide Ft25	2110.1048.5		
10	1 Segment porteur RESINOTEX	Ø125x15x2.5	Merkel	
9	2 Joint étanchéité de piston	T18.125x105x12.5iso	Merkel	
8	1 Joint statique de tige	R n° 38	Merkel	
7	1 Piston XC38	2110.1048.4		
6	1 Tige Inox Z6CND16-04-01 chromée ép.: 0.030	2110.1048.3		
5	1 Fond	2110.1048.2		
4	2 Bossages 1/4\" BSPP	2110.1048.1		
3	1 Bossage	2110.1048.1		
2	1 Bossage	2110.1048.1		
1	1 Cylindre Rodé zingué ép.: 0.120	2110.1048.1		



Vue 'B'



											
Us. ∇ Ra 6.3		Protomhydro									
Tol Gén ±0.2											
Ech: 1/2											
Dess: MICESKI		 ATN		W ok/ Conformance execution							
Date: 05.94											
				Indice Dess				Modifications			
HYDRAULIQUE PAUL MH Rue du Compas 95310 ST OVEN L'AUMONE Tél. 34 64 85 50				Désignation:				Modèle:			
				VERINS de VANNE de REMPLISSAGE et VIDANGE				N° 2110.1048.0			
				ø125x70 course: 3050							