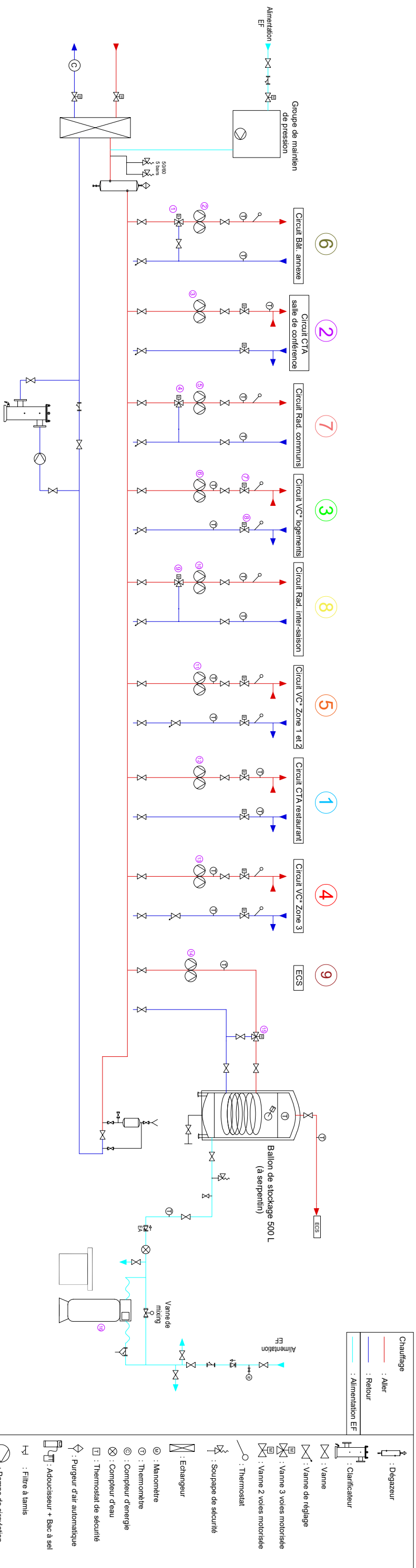


ANNEXE I - SCHEMA HYDRAULIQUE - MODE CHAUD



① : Landys&Gyr - VxG 41/50+ SKD62	③ : Kleback&Pater - RB40/25+RB40MD200Y
② : Wilo - DOS 40/90R (double)	④ : Salmons - DCX 50/50 (double)
③ : Salmons - DCX40/40 (double)	⑤ : Wilo - Stratos Maxo D80/0 5-12 (double)
④ : Salmons - DCX 50/90 (double)	⑥ : Salmons - DCX 40/40 (double)
⑤ : Kleback&Pater - RB40/25 + SRV RB40MB200Y	⑦ : Salmons - DCX 50/50 (double)
⑥ : Grundfos - Magna 1 D 32/60-180 (double)	⑧ : Salmons - DCX 65/25 (double)
⑦ : Bellimo - LR230AS	⑨ : Landys&Gyr - VxG 41/50 + SKD62
⑧ : Bellimo - LR230AS	⑩ : BWT - Perno Ayo 70 75