



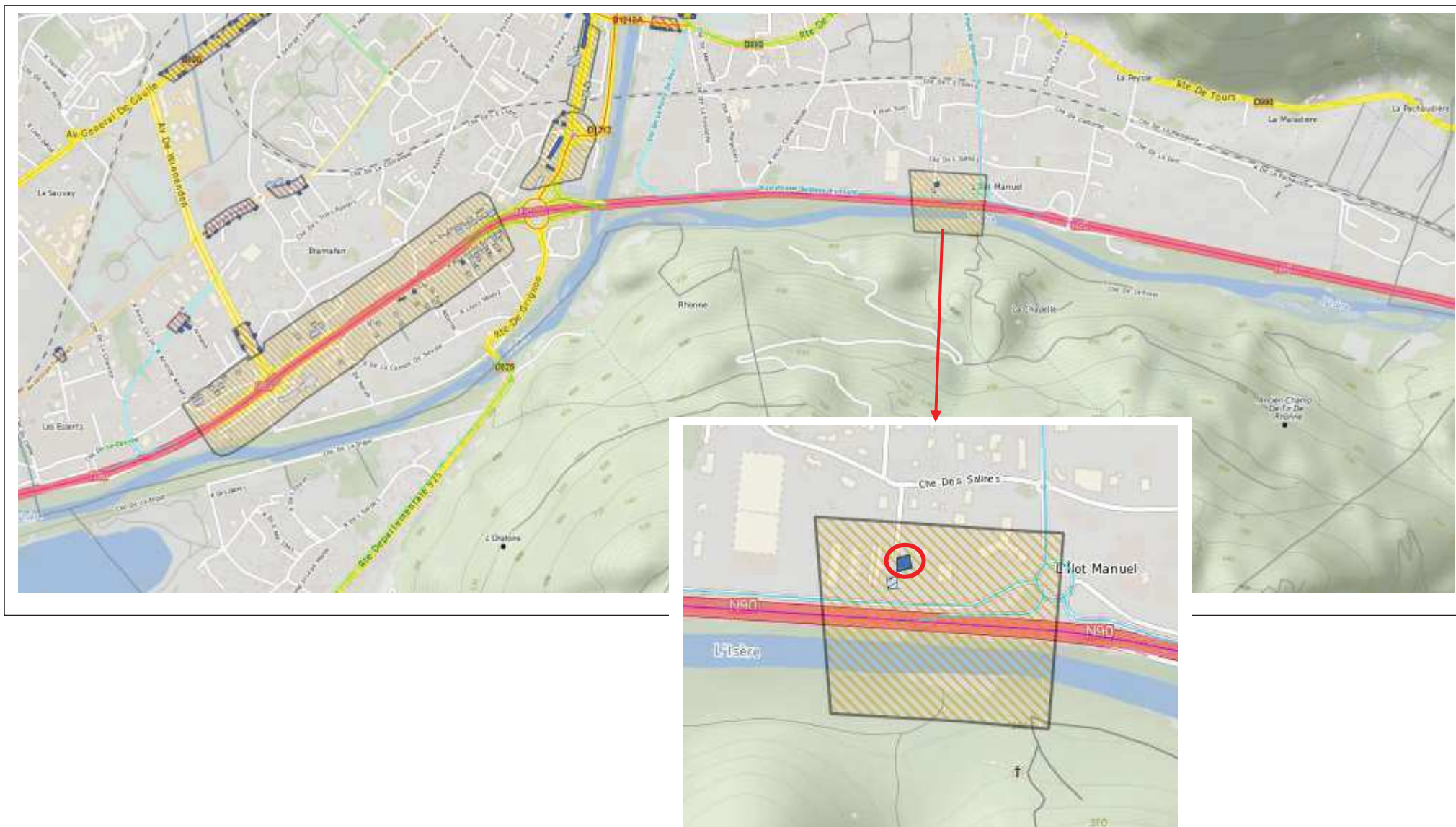


7.2.2 Cartographie des ZBC et PNB

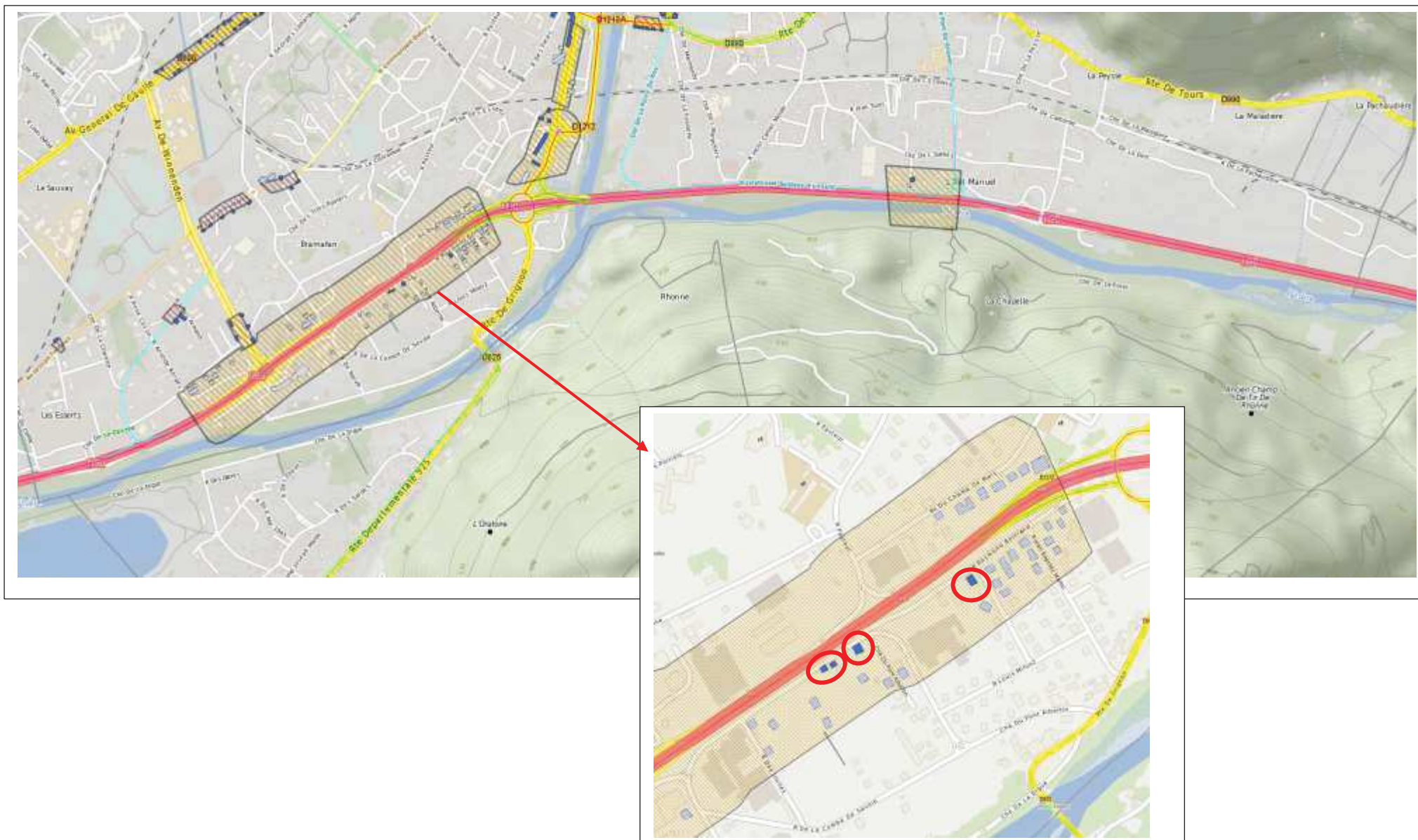
Légende

	Logement non PNB
	PNB
	Autre (bâti non sensible)
	Bâtiment concerné par l'opération d'ensemble de traitement par isolation phonique des façades menée entre 2012 et 2013 (propriétaire ayant refusé les travaux)

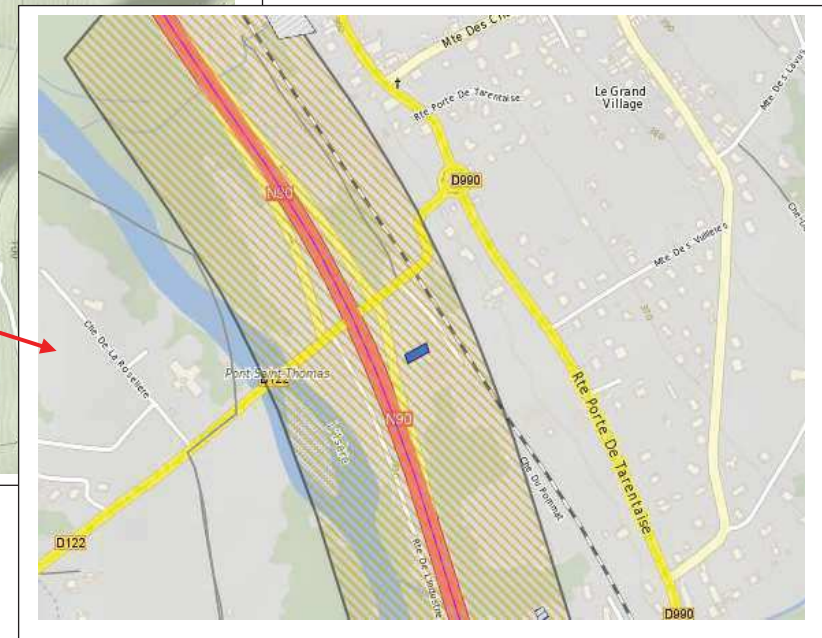
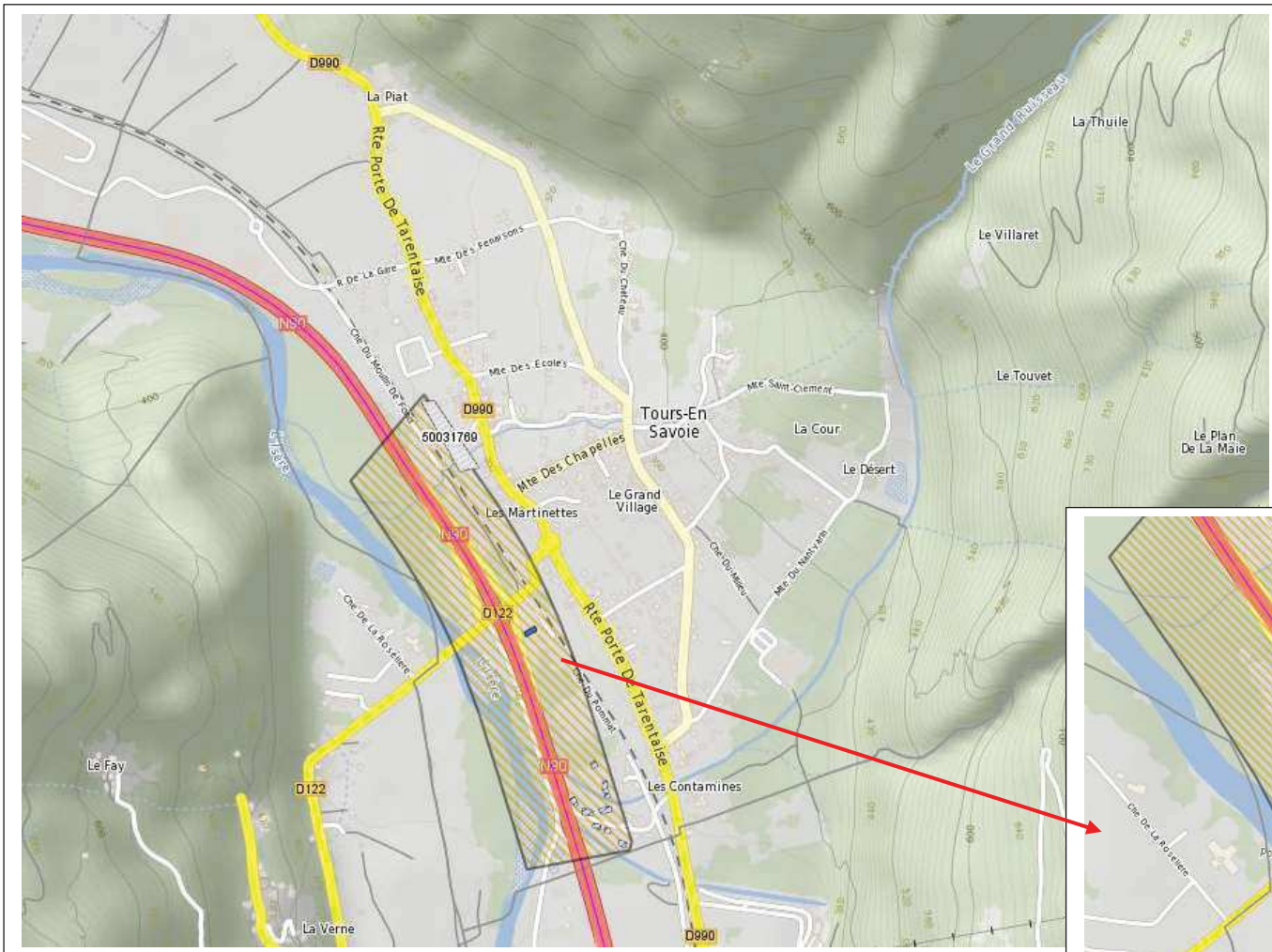
ZBC : N90-ALBERTVILLE-1



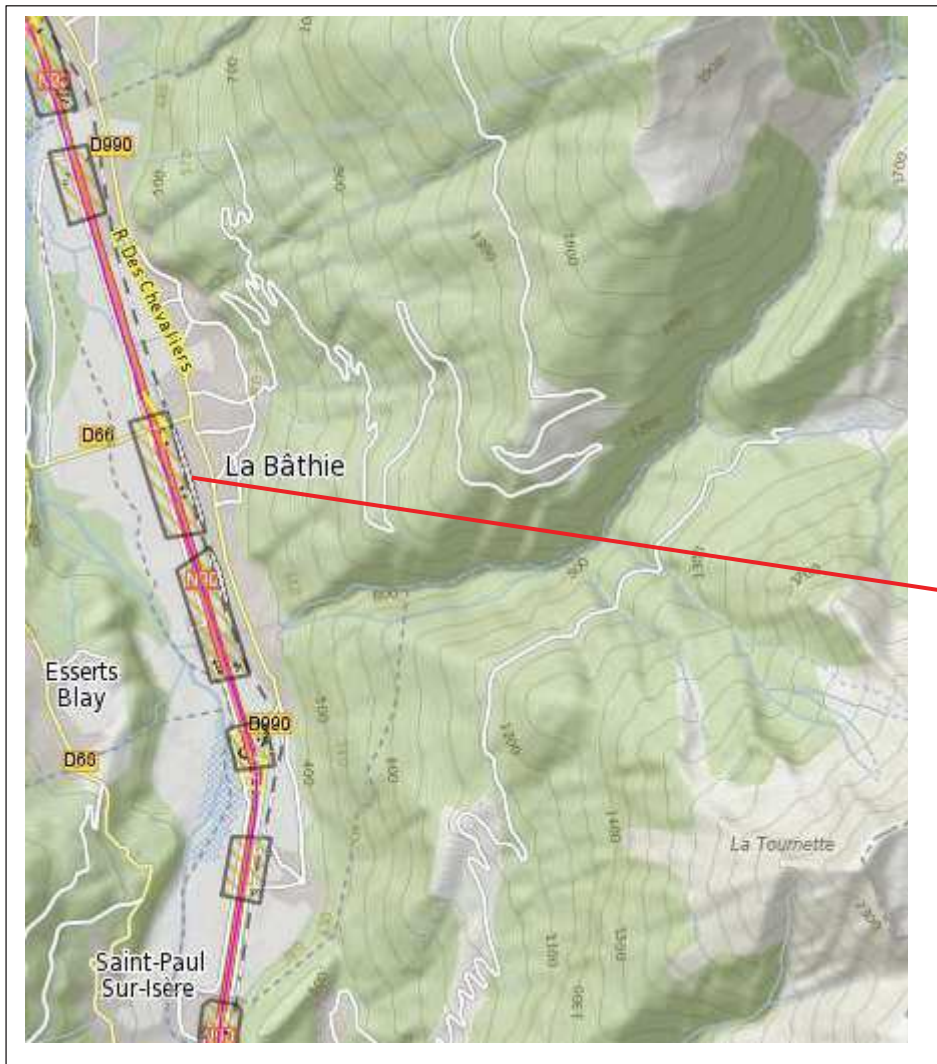
ZBC : N90-ALBERTVILLE-2



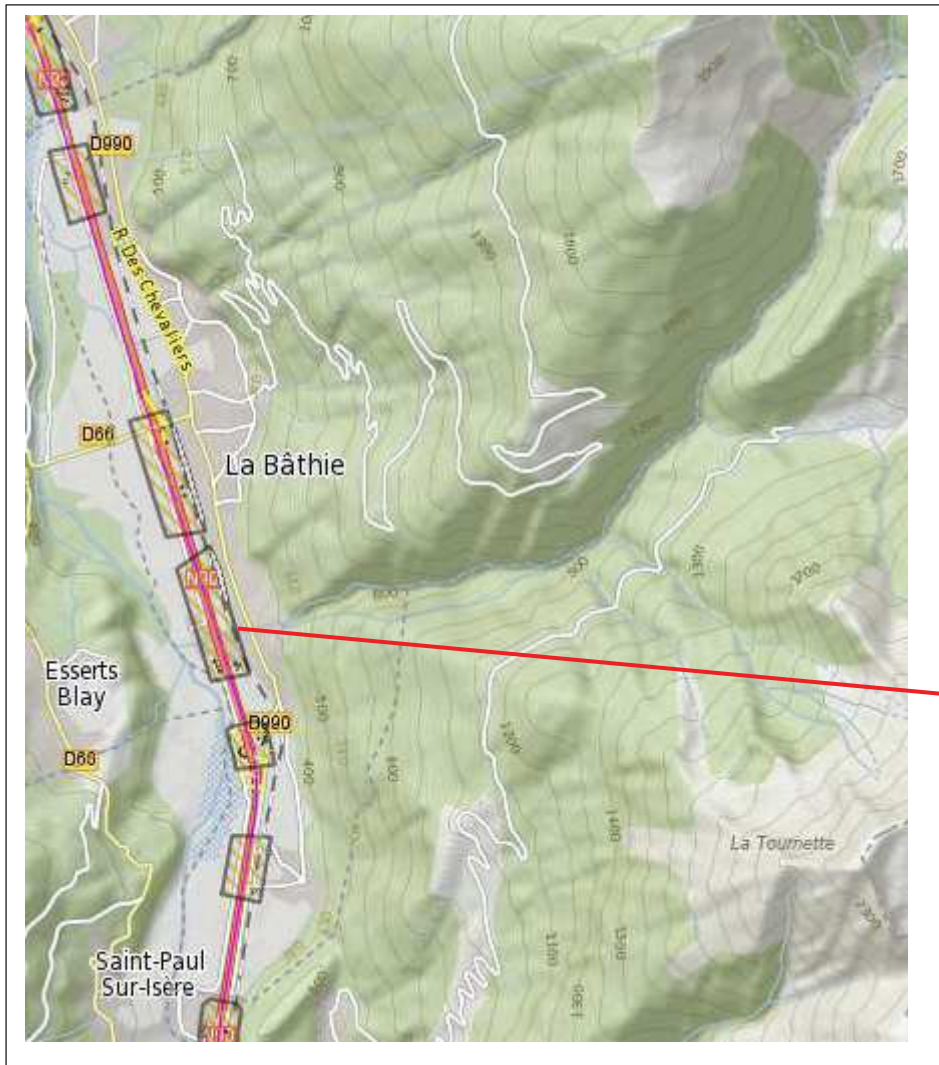
ZBC : N90-TOURSSAVOIE-1



ZBC : N90-LABATHIE-4



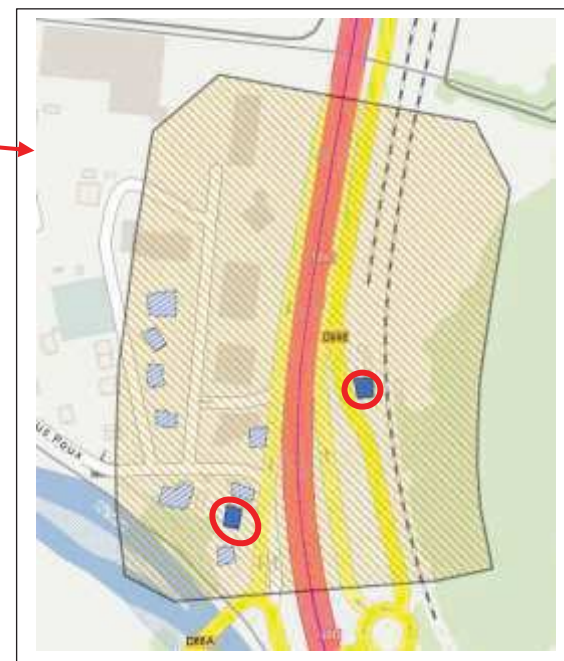
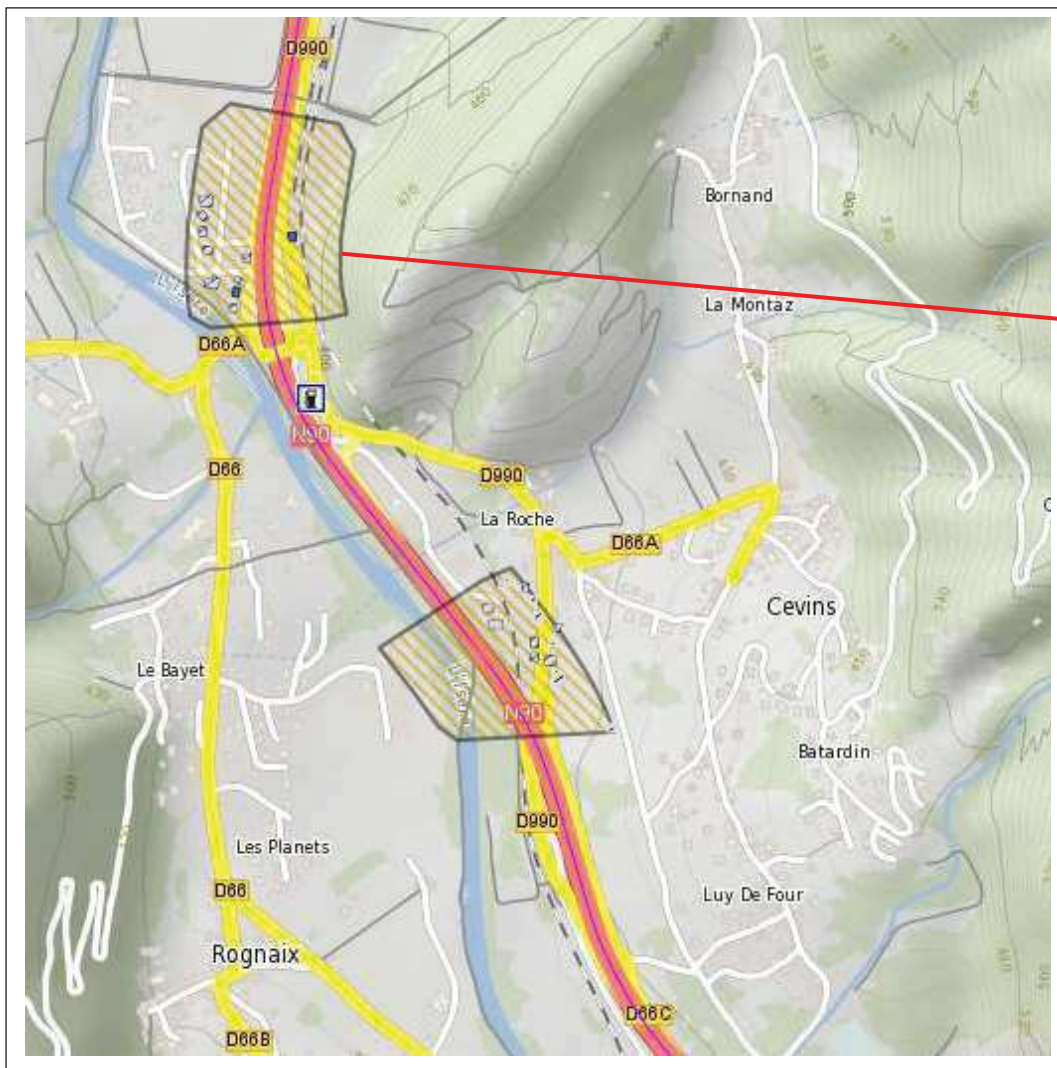
ZBC : N90-LABATHIE-3



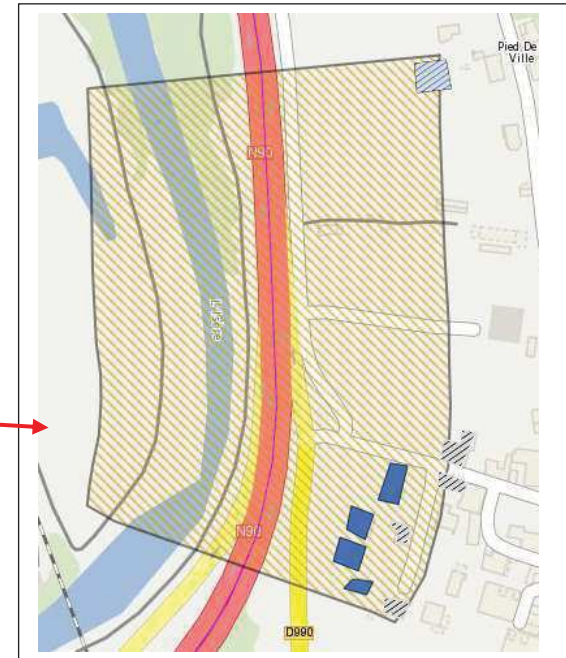
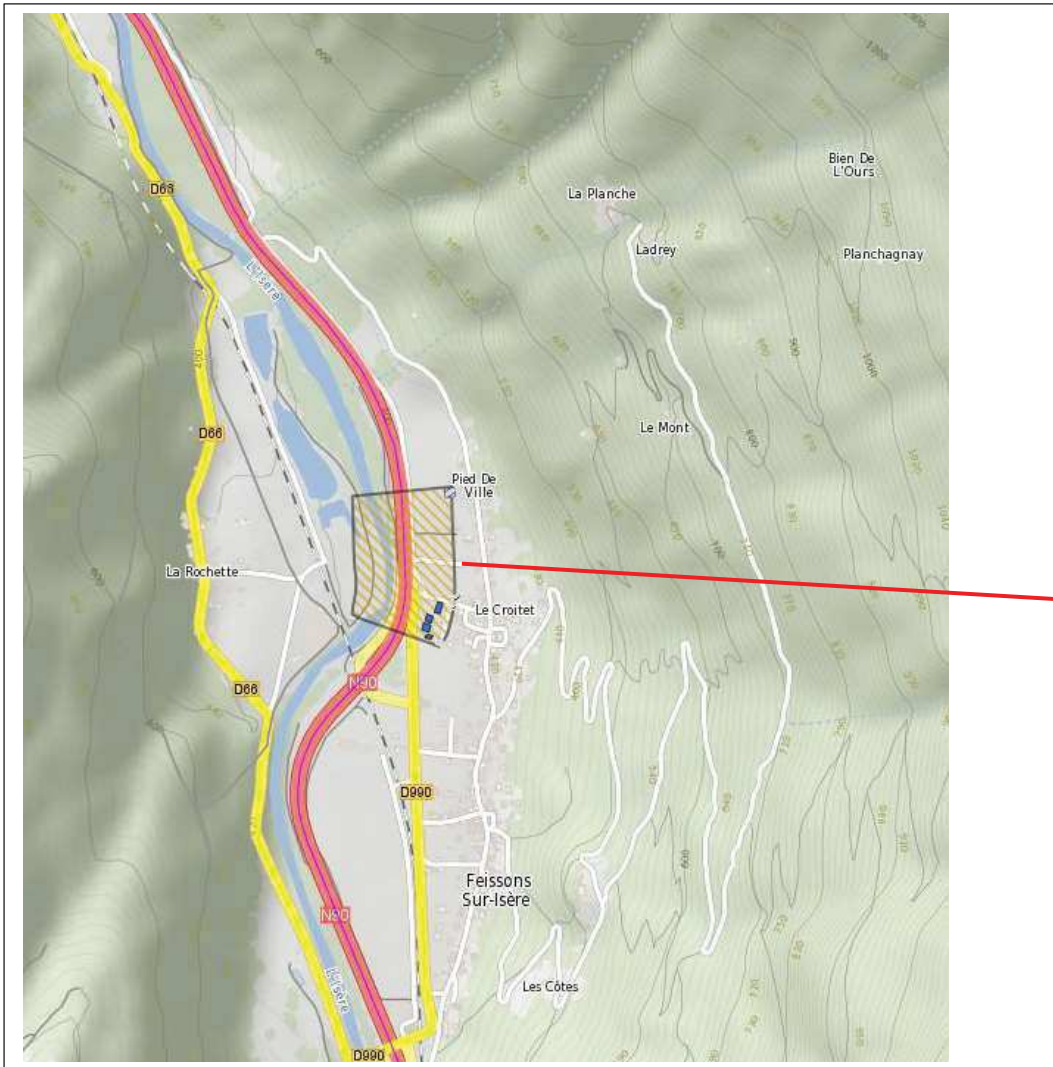
ZBC : N90-LABATHIE-2



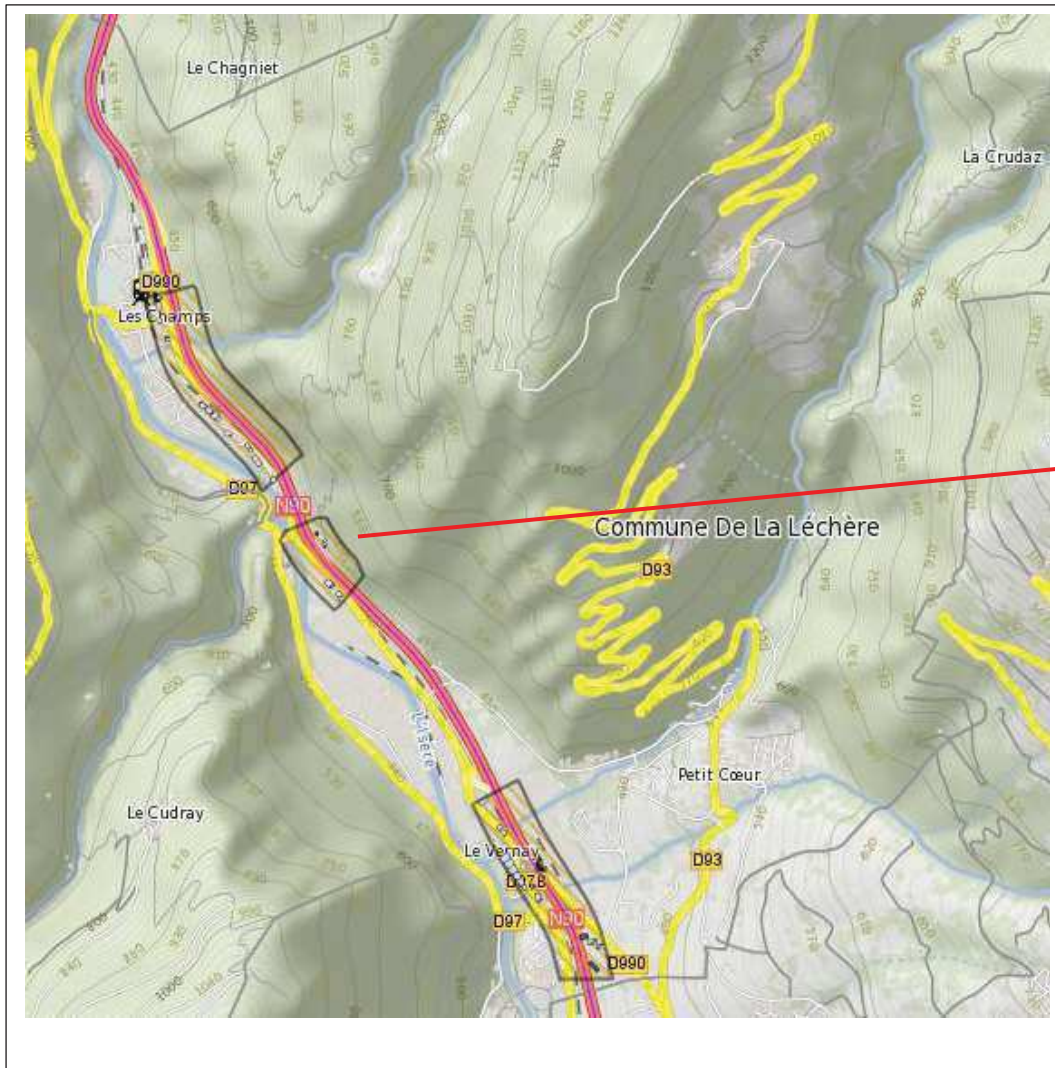
ZBC : N90-CEVINS-2



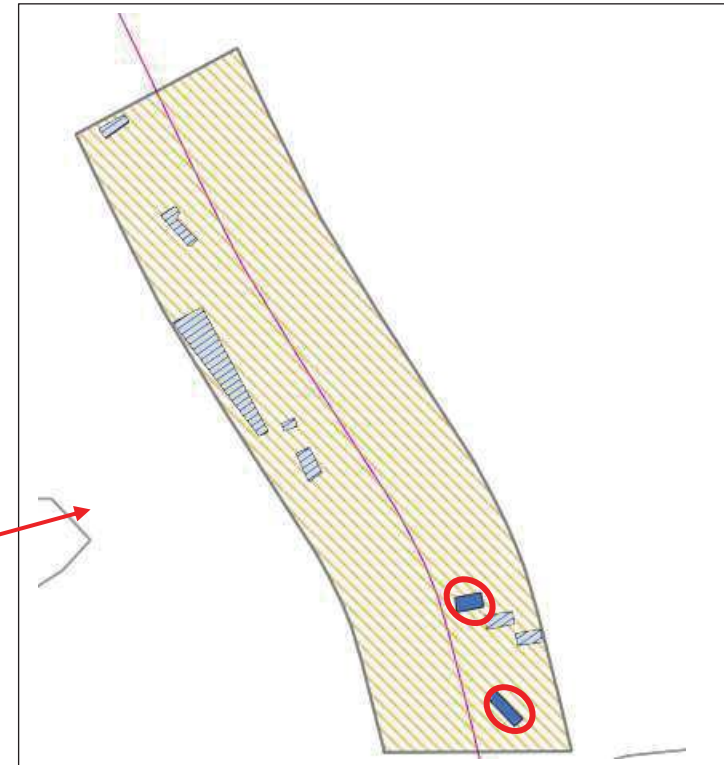
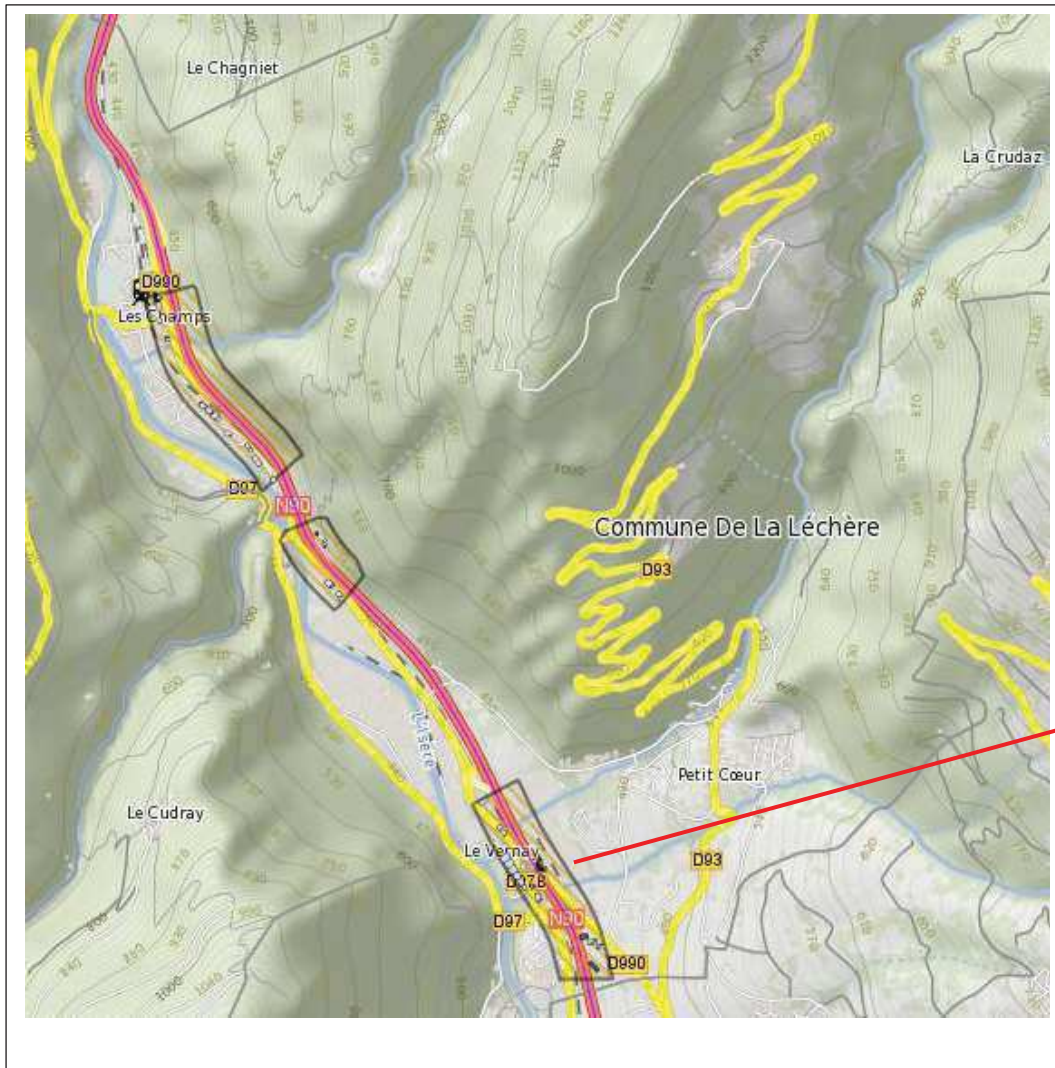
ZBC : N90-FEISSONS-SUR-ISERE-1



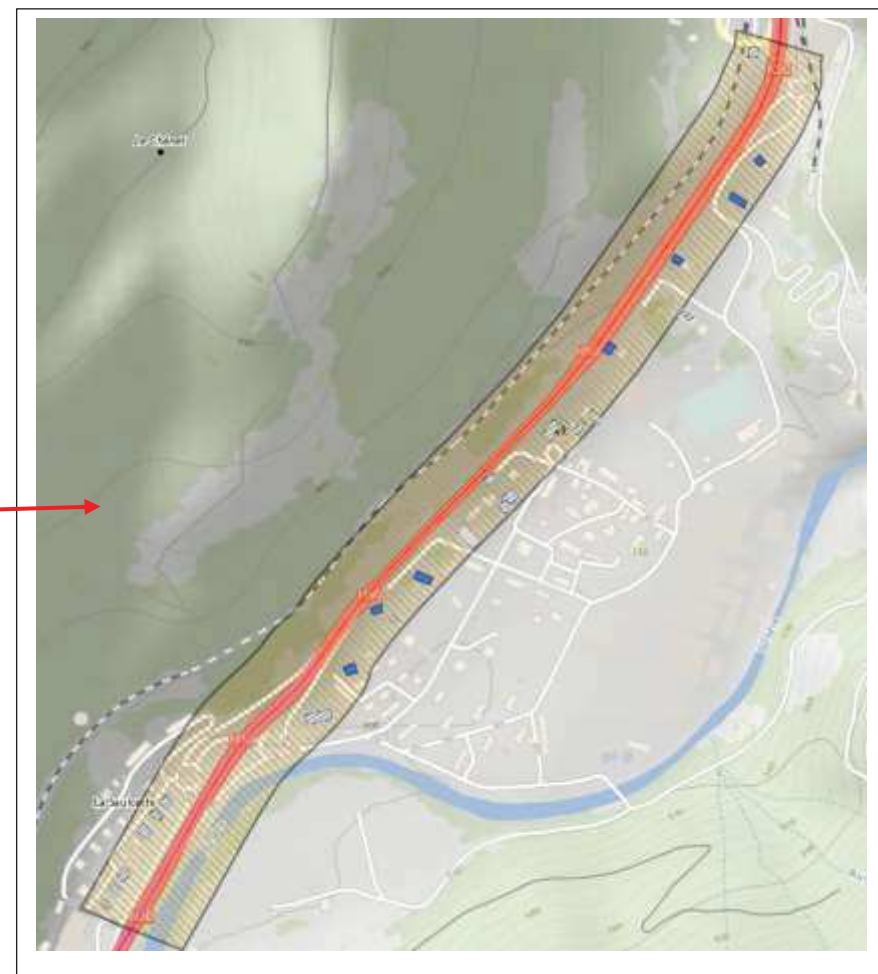
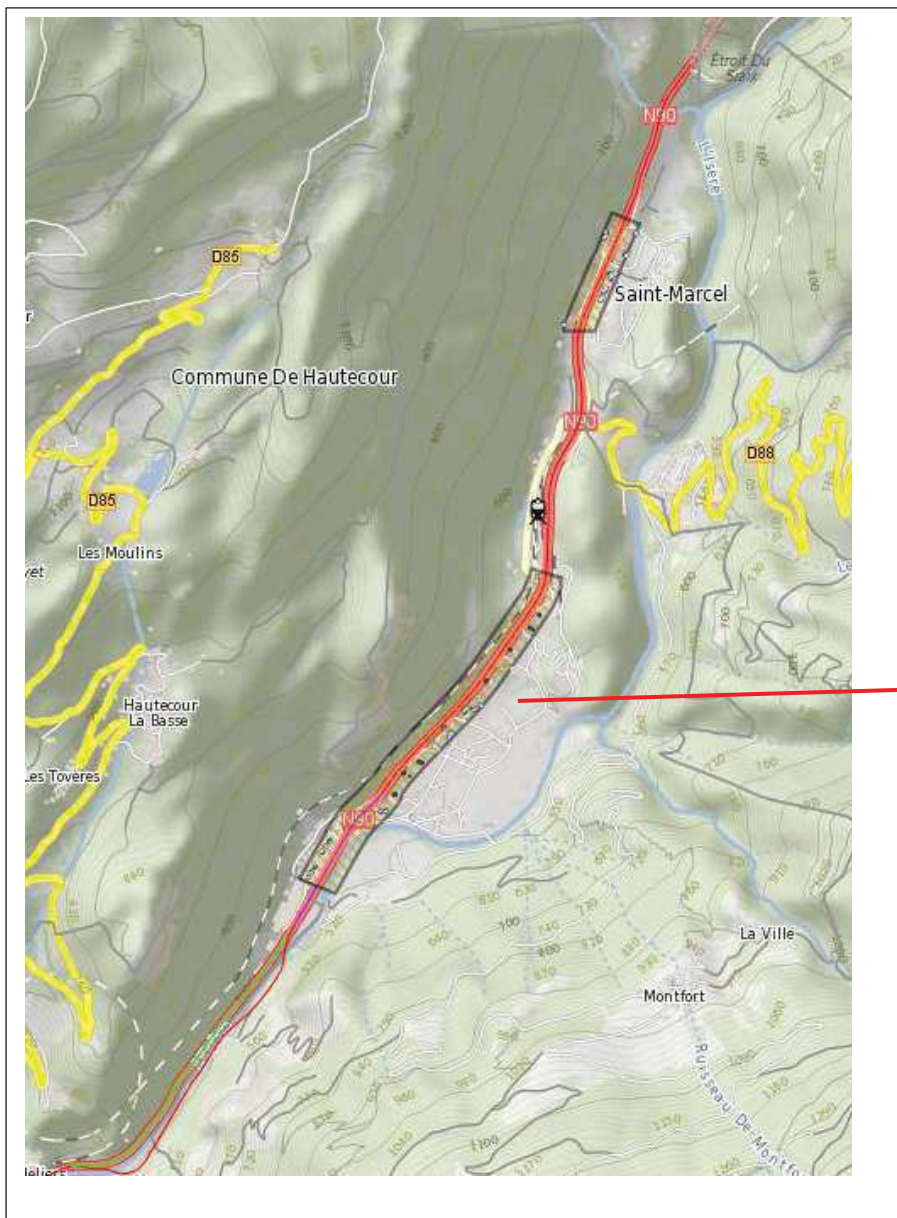
ZBC : N90-LA LECHERE-2



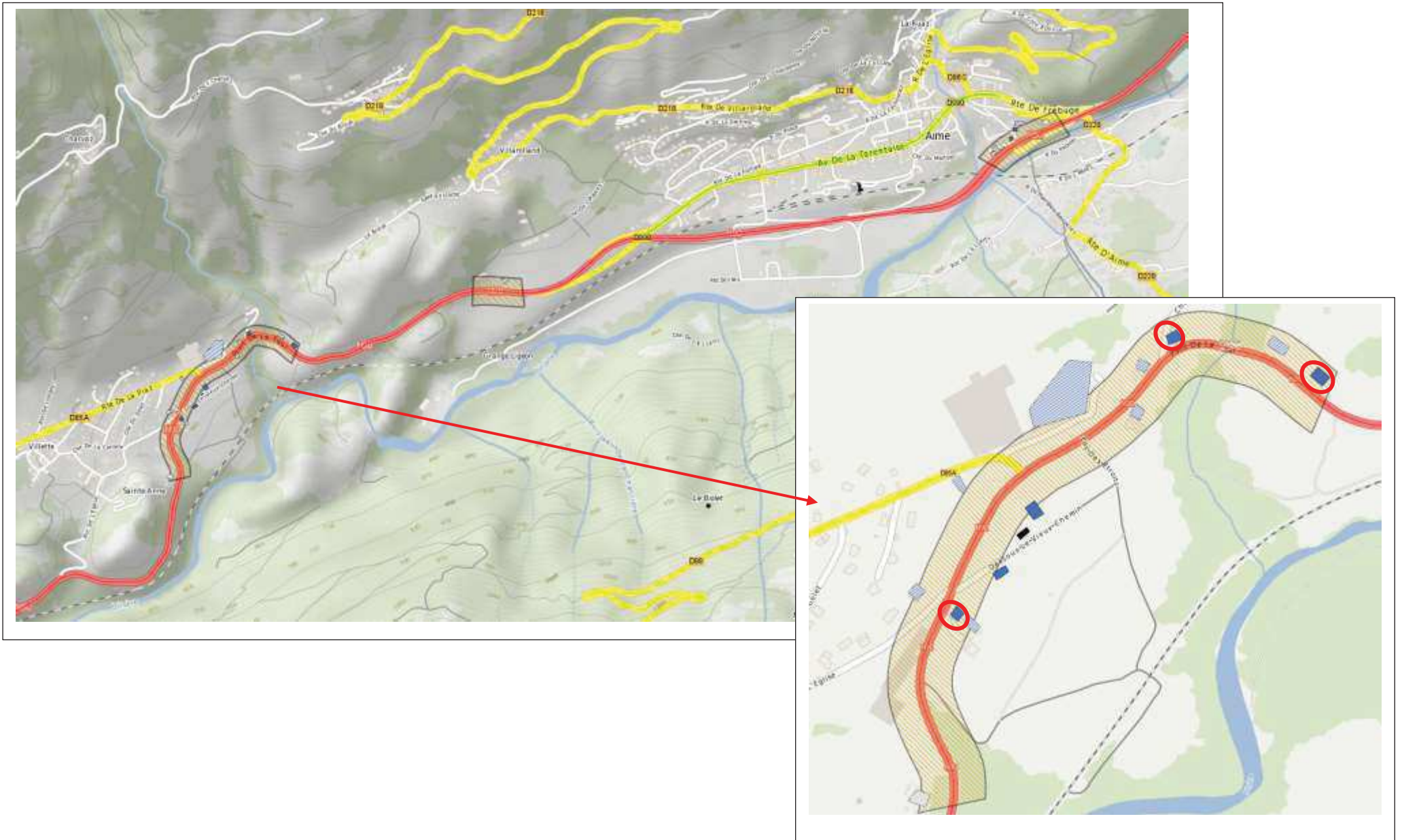
ZBC : N90-LA LECHERE-1



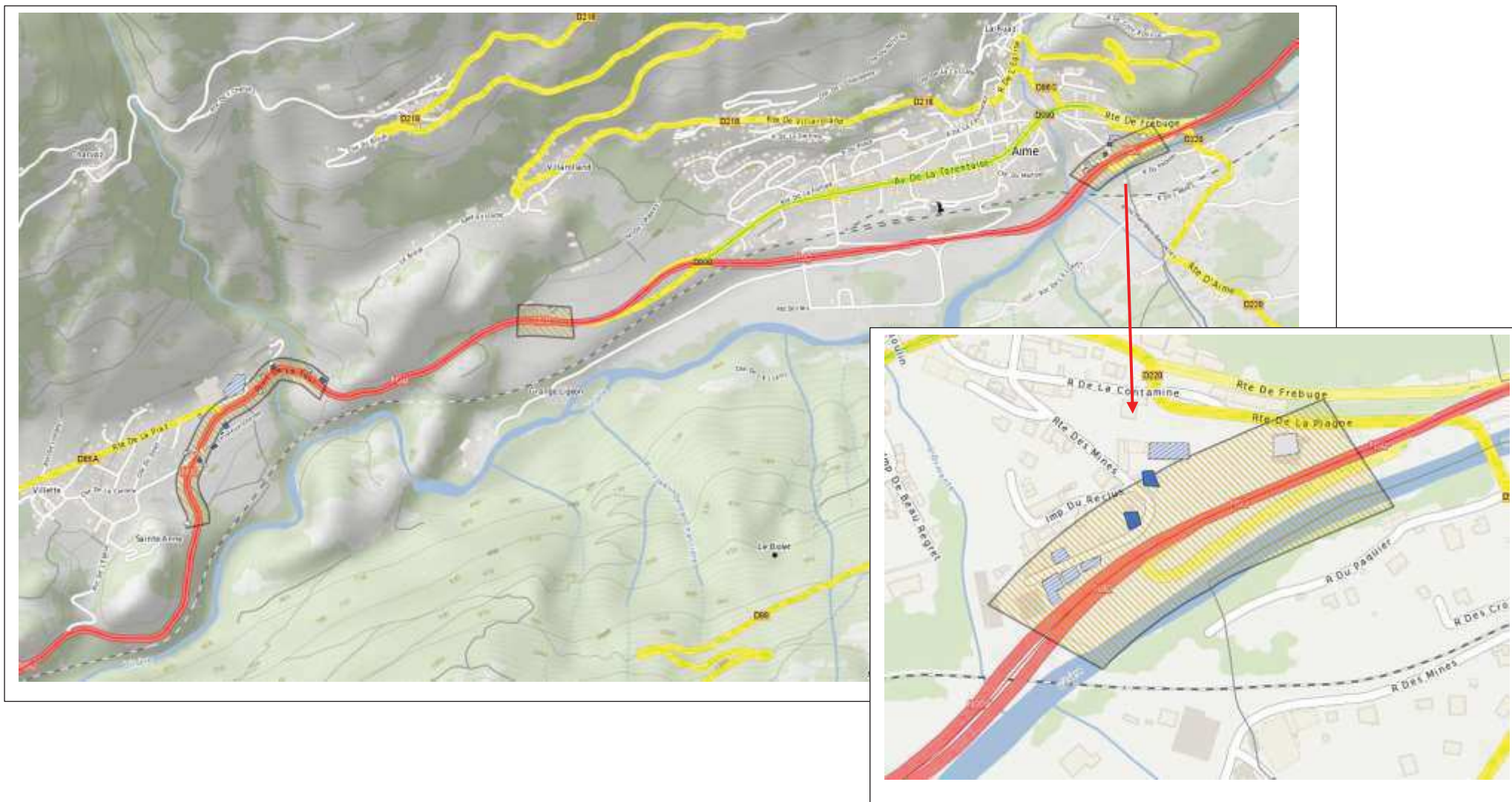
ZBC : N90-ST MARCEL-2



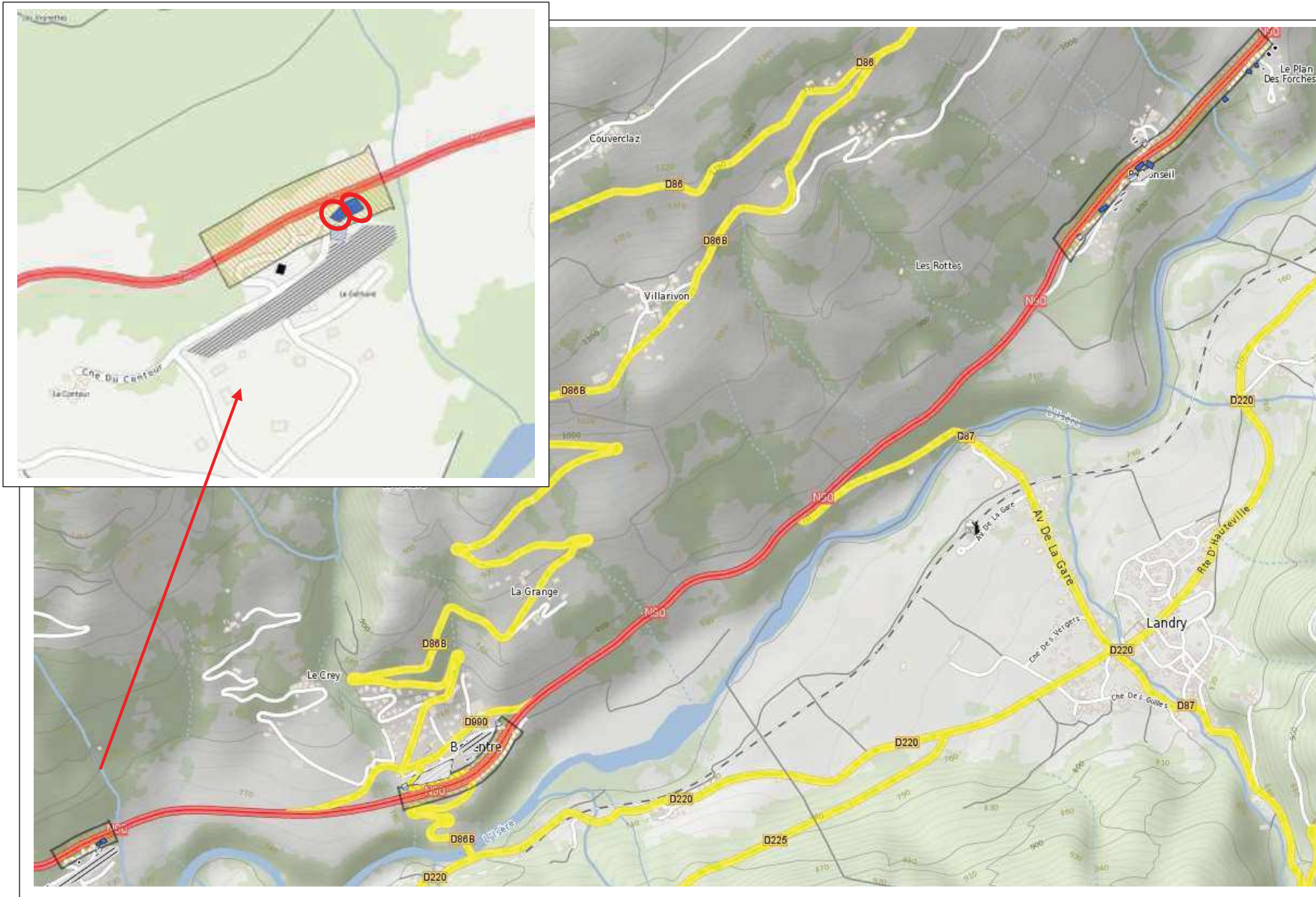
ZBC : N90-AIME-3



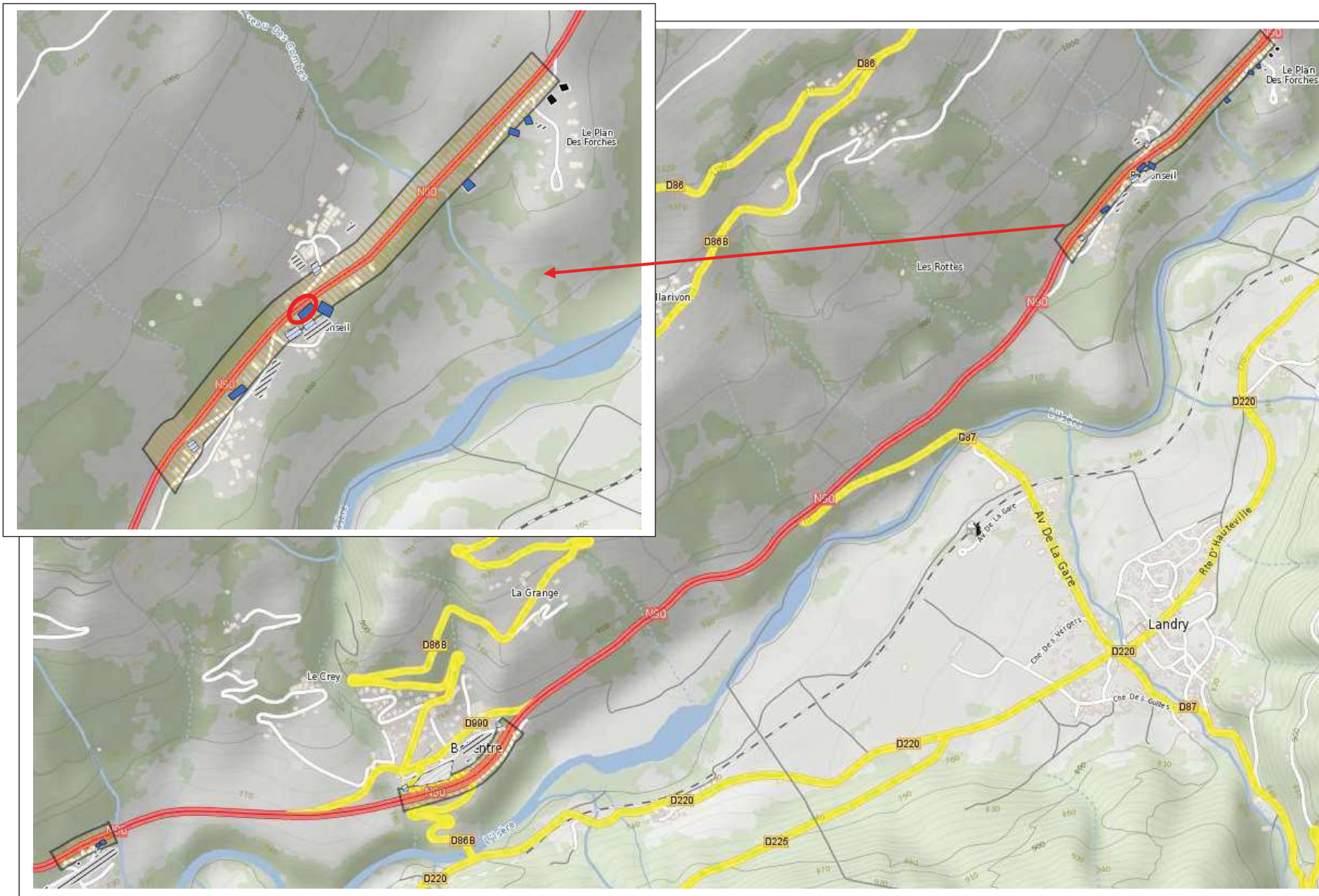
ZBC : N90-AIME-1



ZBC : N90-BELLENTRE-3



ZBC : N90-BELLENTRE-1



ZBC : N201-CHAMBERY-1

