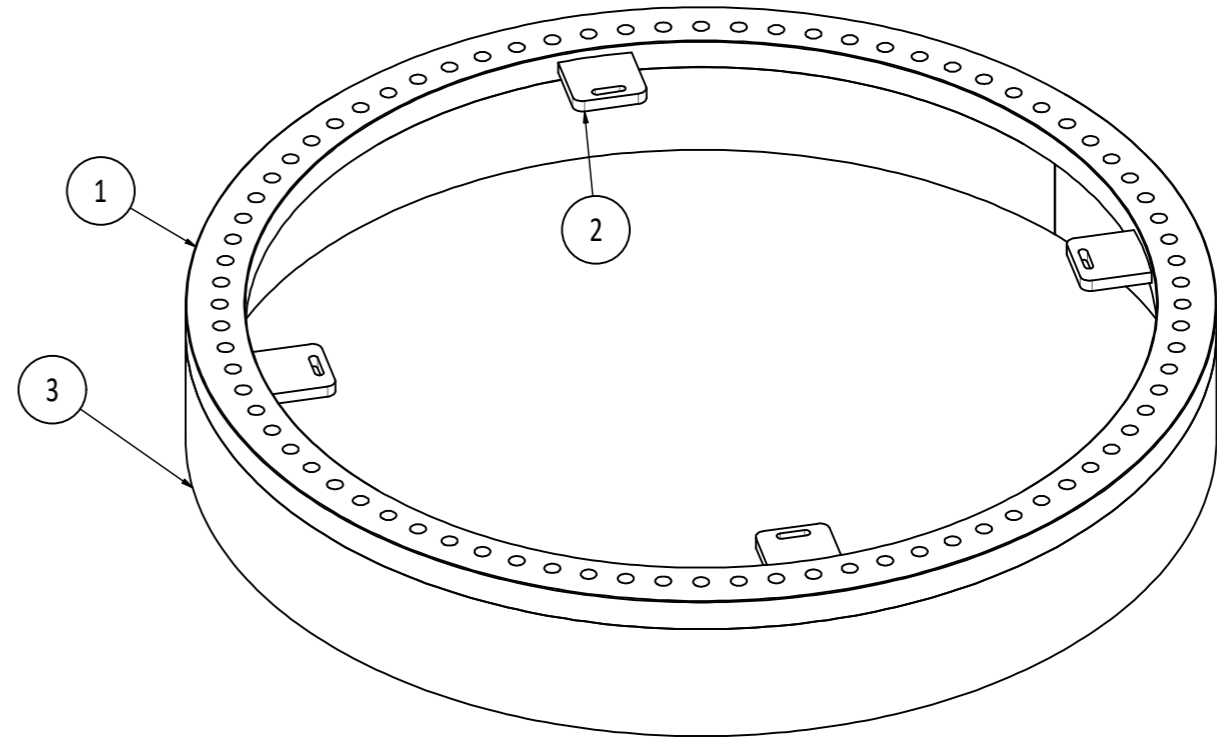
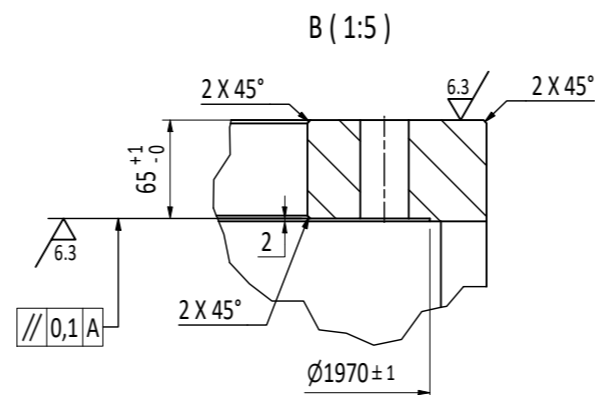
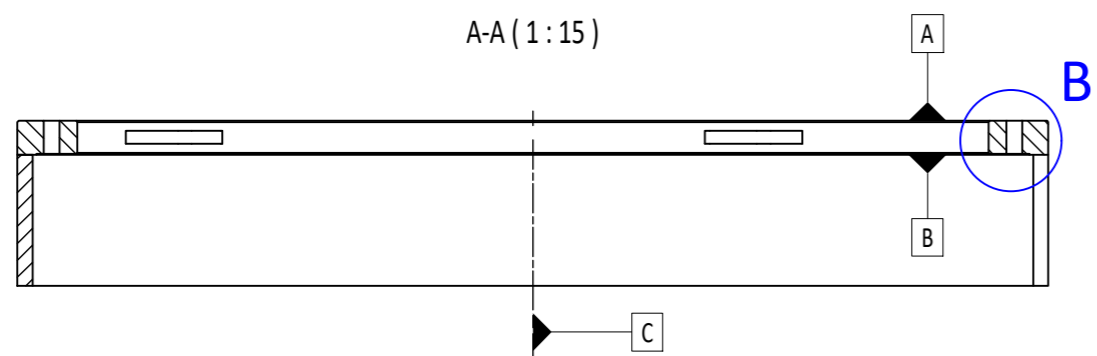
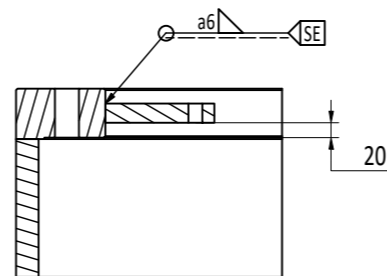


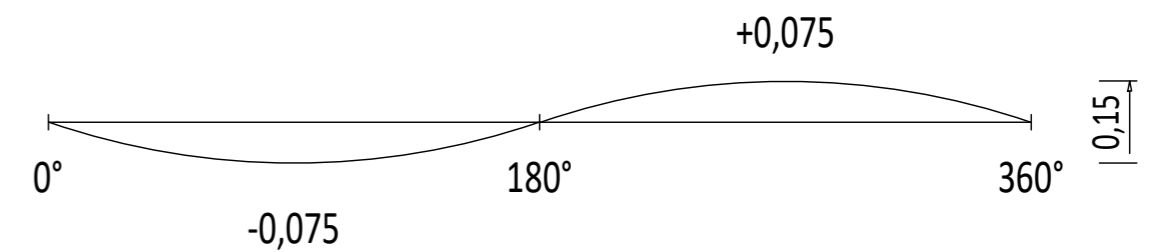
C-C (1 : 10)
Typical welding



Summary of revision changes		
	Change description	Sheet
1	POS 3 updated acc to agreements	1
2	Note regarding BV, welding and NDT added	1

NOTE. Top and bottom surface A & B :

The deviation must rise or fall gradually, and the maximum value can be reached only once per 180° sector.
Max. deviation 0,15 mm.



Notes:

1. IMPORTANT! All materials to be delivered with BV, 3.2 material certificate!

2.NDT:

Minimum extent of NDT for structural welds shall be according to Bureau Veritas Rules for the Certification of Lifting Appliances onboard Ships and Offshore Units July 2021, Rule Note NR 526.

NDT inspection category is stated on detail drawings for welded assemblies. If not specified, welds shall be inspection category III (SE).

Category I - Special (SP) - Typically critical and highly stressed welds.

Category II - Primary (PR) - Typically welds of primary load carrying structure.

Category III - Secondary (SE) - Other welded connections.

All welds shall show evidence of good workmanship. For visual inspection and NDT, the acceptance level shall comply with ISO 5817 quality level C, intermediate ('primary' and 'secondary'). For critical areas more stringent requirements, such as ISO 5817 level B, stringent ('special'), shall be applied.

1	3	Cut Material	PL 30 x 260 x 6318.	NVD36		387,5 kg	
4	2	Cut Material	PL 25 x 144 x 150.	NVD36	-	3,9 kg	
1	1	Cut Material	PL 70 x 2045 x 2045.	NVE36 +z35	-	394,1 kg	
QTY	ITEM	TITLE	DESCRIPTION	MATERIAL	ITEM NUMBER	MASS	
REVISION	ISSUE DESCRIPTION			REVISED BY	CHK BY	APPR BY	APPR DATE
1	Issued for review			ANBJ	GEVO	GEVO	30.07.2024

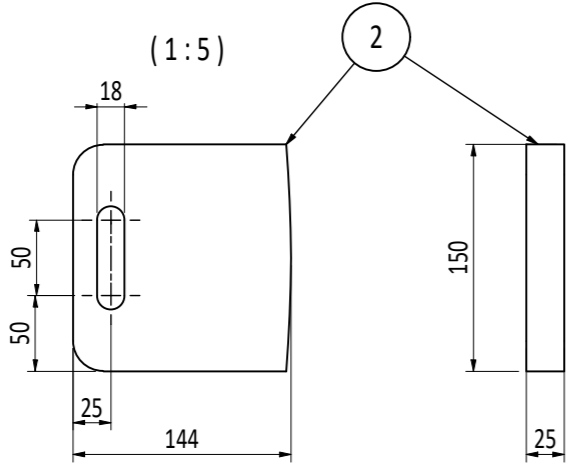
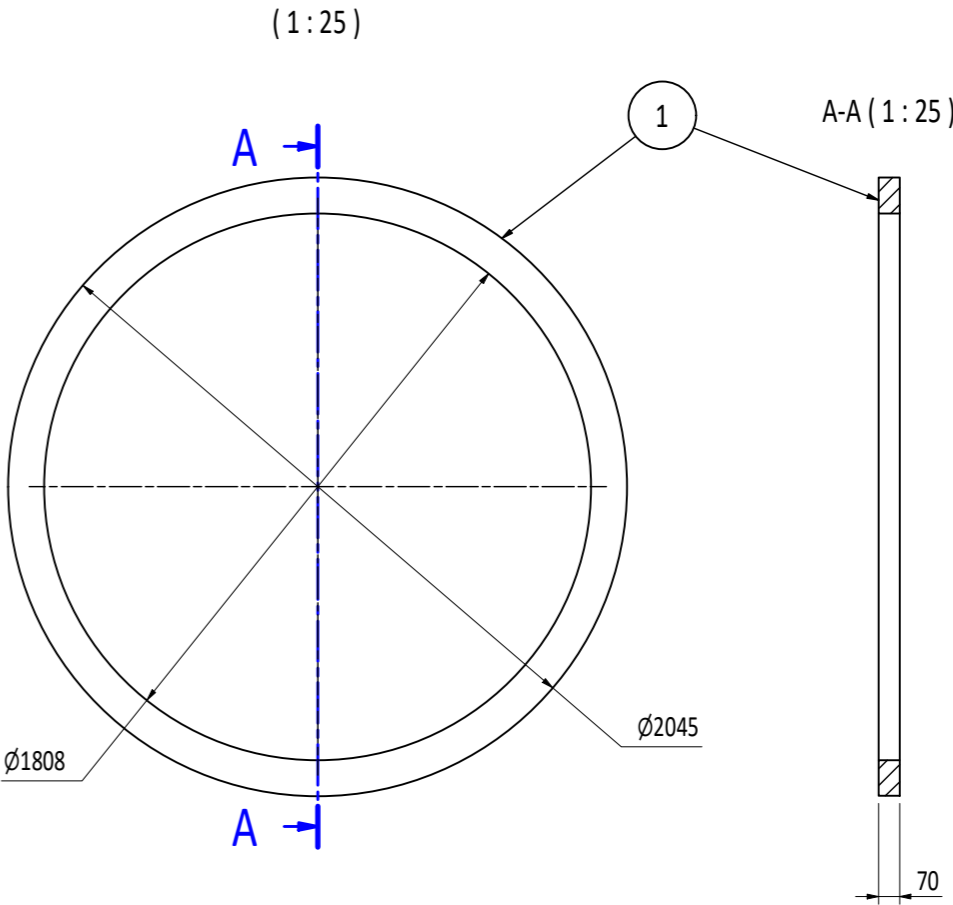
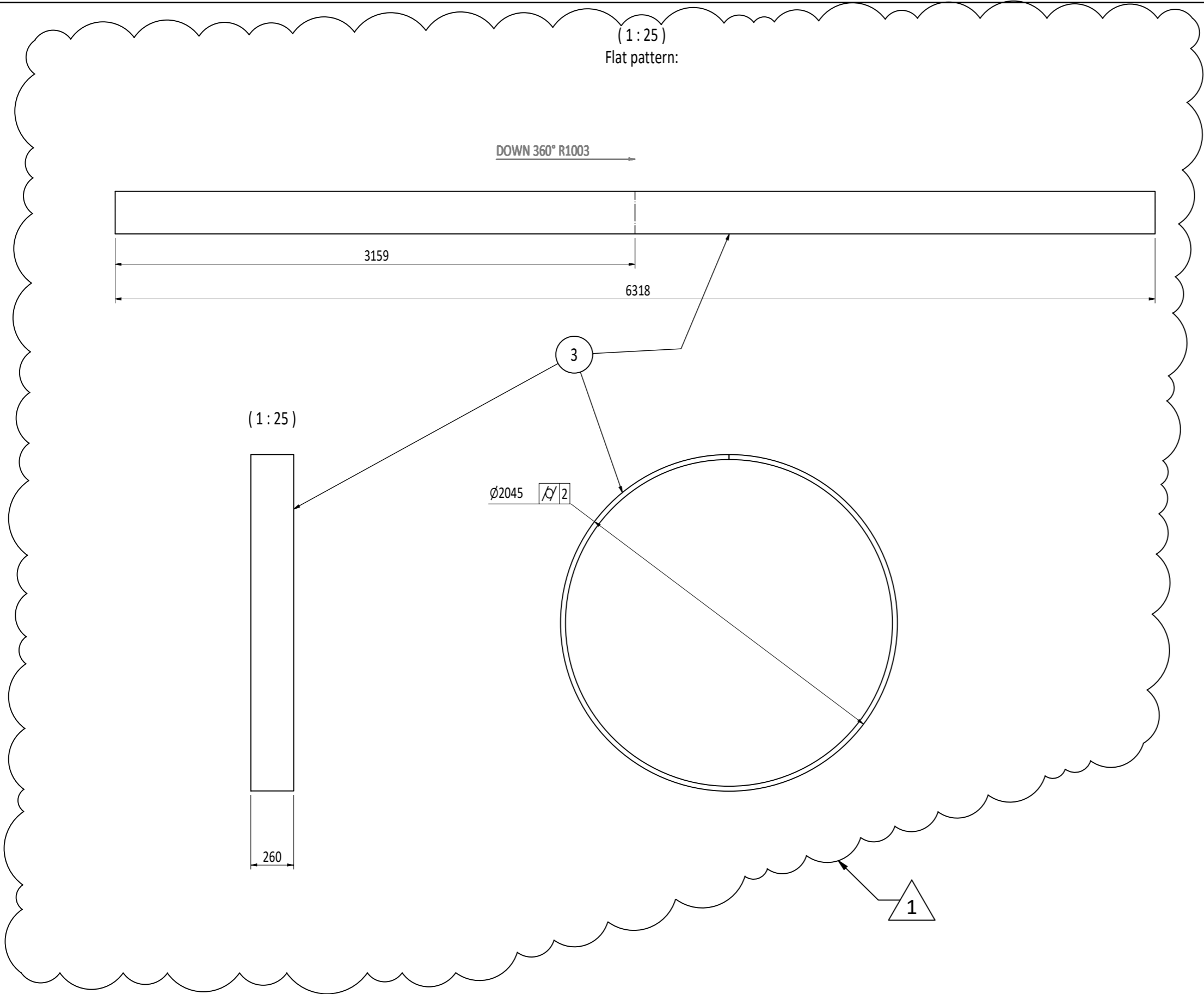
Manufactured Foundation
Foundation drawing
Welding & machining



MOTUS TECHNOLOGY AS - Verftsg. 10, 6416 Molde, Norway
Tel. +47 712 59 540 - www.motustech.no

GENERAL TOLERANCES NS-ISO 2768-mK / Ra 6.3 EN ISO 13920-AE / Sa 2.5		CREATED BY ANBJ	MASS 740 kg
	SHEET SIZE A2	CREATED DATE 23.01.2024	SCALE 1 : 15
DRAWING NUMBER 325811		SHEET 1 / 2	REVISION 1

The information contained herein is the property of MOTUS TECHNOLOGY AS and may not be copied or communicated to a third party, or used for any purpose other than that for which it is supplied without the express written consent of MOTUS TECHNOLOGY AS.



Manufactured Foundation
Foundation drawing
Parts



MOTUS TECHNOLOGY AS - Verftsg. 10, 6416 Molde, Norway
Tel. +47 712 59 540 - www.motustech.no

DRAWING NUMBER	SHEET	REVISION
325811	2 / 2	1
The information contained herein is the property of MOTUS TECHNOLOGY AS and may not be copied or communicated to a third party, or used for any purpose other than that for which it is supplied without the express written consent of MOTUS TECHNOLOGY AS.		SHEET SIZE
		A2